

LEA Name : Hatboro-Horsham SD
Address : 229 Meetinghouse Rd
Horsham , PA 19044

County : Montgomery
AUN Number : 123463603
LEA Type : SD

Annual Financial Report Accuracy Certification Statement

For Fiscal Year Ending
6/30/2022

Pennsylvania Department of Education
&
Office of Comptroller Operations

PDE-2056: Intermediate Unit
PDE-2057: School District, AVTS/CTC, Charter School,
and Special Program Jointure

CERTIFICATION: By signing this page I agree that the electronic data submitted is a complete and accurate statement of the financial operations and status of the local education agency for the fiscal year. It has been prepared in accordance with generally accepted accounting principles and established Commonwealth of PA reporting guidelines.

Chief School Administrator Signature

Date

Board Secretary Signature

Date

William R Stone

Contact Person

bstone@hatboro-horsham.org

Contact Person E-mail Address

(215)420-5007 Ext :

Contact Person Telephone Number

(215)420-5262

Contact Person Fax Number

Audit Certification
Annual Financial Report:
For Fiscal Year Ending **6/30/2022**
(Pursuant to PA School Code Section 218(b))

LEA Name : Hatboro-Horsham SD
AUN Number : 123463603
County : Montgomery

Audit Certification Due: 12/31/2022

This certification is applicable to the Annual Financial Report data submitted through the Consolidated Financial Reporting System (CFRS).

CERTIFICATION: By signing this page I agree that the financial statements of the school have been properly audited as noted above pursuant to Article XXIV, and in the auditor's professional opinion, the Annual Financial Report (PDE-2057) submitted through CFRS is materially consistent with the audited financial statements.

Chief School Administrator

Board Secretary

Signature

Date

Signature

Date

William R Stone

Contact Person

bstone@hatboro-horsham.org

Contact Person E-mail Address

(215)420-5007

Ext :

Contact Person Telephone Number

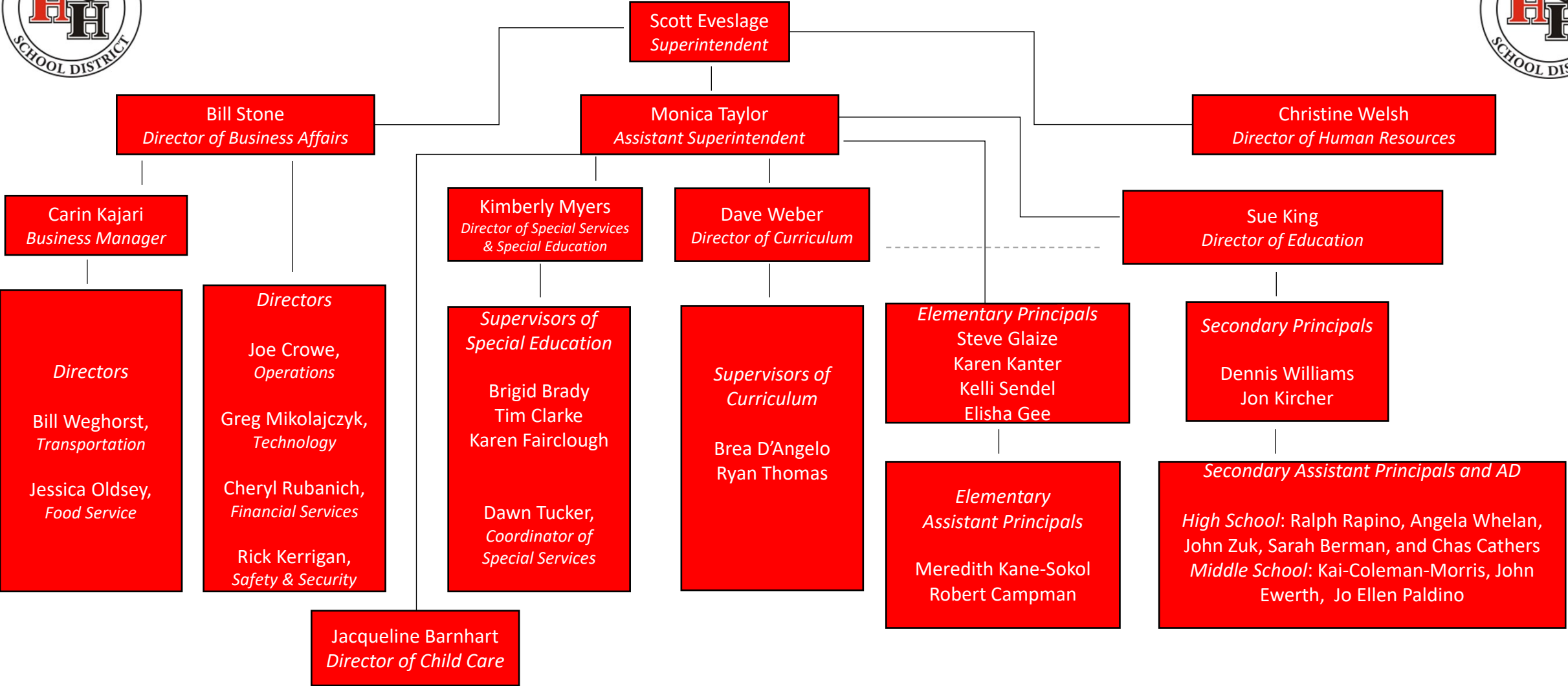
(215)420-5262

Contact Person Fax Number



District Organizational Chart

2021-2022



Hatboro-Horsham School District Fixed Assets and Capitalization Policy

Purpose

This procedure establishes the fundamental guidelines and practices for properly accounting for and reporting fixed assets. A fixed asset is an element of the financial system constituting economic resources as of a certain date, and expected to benefit future operations i.e. land, buildings, equipment, inventory, and receivables. Capital assets, which include property, plant and equipment, are reported in the applicable governmental or business-type activities columns in the government-wide financial statements. The School District defines capital assets as assets with an initial, individual cost equal to or greater than \$4,000 (amount not rounded) or purchased with debt proceeds and the assets must have an estimated useful life in excess of one year, which does not change its original shape, appearance or character with use.

The district maintains a series of internal control checklists which help protect district assets.

Division of Duties

The person responsible for recording fixed assets does not make general ledger entries

The reconciliation of the fixed asset detail accounts with the fixed asset control accounts and making entries into the fixed asset software are separate

The custodian of the fixed assets and the taking of physical inventory are separate

The person responsible for overseeing the tagging of fixed assets is not the fixed asset custodian

Fixed asset purchases require multiple authorizations

Asset disposals require authorization and school board approval

Responsibilities

The Business Manager or designee (Purchasing Specialist and Financial Systems Manager) is designated as the Fixed Asset System Coordinator and is responsible for ensuring:

- Administration and maintenance of the asset and property accountability and control system

- The designation of custodial areas and Property Custodians for each asset group

- That Property Custodians are periodically given current records of the property for which they are responsible for verification purposes. Lists are provided at the end of each school year (see Fixed Asset Re-certification)

- That the designated Property Custodians are responsible to assure that assets are given proper care and protection and are used for official business purposes only

Property Custodians are responsible for:

- Notifying Purchasing whenever fixed assets are lost, destroyed, stolen or disposed of

- Identifying and reporting to management any property which is useable but not needed, or which should be disposed of

- Assisting in taking physical inventories

Individual employees are responsible for:

- The proper use, care and protection of district property

- Ensuring that district property is used only for the conduct of official district business

- Reporting any suspected fraud, theft, or embezzlement

Asset Categorization

Assets are classified into various groups

Fixed Asset Purchasing, Processing and Tagging

When a purchase order is entered into the district's financial system for approval, a fixed asset flag is checked. Once the item is purchased it goes into a temporary asset account. At month end, the Purchasing Specialist prints a file of all fixed asset purchases for the month. Purchasing separates technology purchases from all other purchases. Purchasing enters specific fixed asset information (i.e. location, serial numbers, etc.) into the system. The Technology Department creates an excel spreadsheet with tracking numbers and uploads that information into the financial system. Purchasing then prints tags and distributes them to the appropriate building and building property custodians.

Fixed assets purchased or acquired outside of the formal financial system process (i.e. donated items, Capital Reserve Fund purchases, Bond Pool purchases) are to be entered into the system manually by Purchasing.

Donations

Donated capital assets are entered manually at fair market value at the date of donation plus additional charges if applicable. These assets are depreciated over their useful lives according to appropriate asset category. Historical assets will be based upon estimates of FMV at time of donation.

Bond Pool Purchasing and Processing

All items, equipment, projects and related services that are paid for out of bond pool funds are expected to have a useful life of 10-15+ years. Project completion date is to be noted on the bond pool report so that the Business Manager or designee has an accurate accounting of expenditures for depreciation purposes for year end processing. Monthly reports are also generated which specifically indicate what expenditures were realized for that particular month. At year end, Purchasing will provide the Business Manager/Business Office with yearly expenditure totals and total dollars of the projects completed for that year.

The Useful Lives Table is maintained through the Financial Software System and in combination with a periodic appraisal of assets within the District.

Capitalization Policy

The district will capitalize assets which have an expected useful life of more than one year and a value of \$4,000 or more. Based on the purchase, this can be \$4,000 for a group of component items that will be maintained as a single unit. Such assets are recorded at historical cost if purchased or constructed. These can include items such as classroom furniture, musical instruments, and computer equipment. If less than \$4,000, these items are not capitalized.

Expenditures on assets must be capitalized (amounts added to the carrying amount of the asset) when it improves the condition of the asset beyond its originally assessed standard of performance or capacity. This can occur through an increase in the annual service potential provided by the asset or increasing the useful life of the asset.

Expenditures that do not meet the above criteria or merely restore the asset to its original function must be expensed as repairs and maintenance as incurred.

General Guidelines Indicating a Fixed Asset

- Retains original shape, appearance and character with use
- Does not lose identity through fabrication or incorporation into a different or more complex unit
- Is non-expendable – that is, if damaged it is more feasible to repair than to replace

Portable Assets

Certain assets like personal computers, digital camera's, small tools, calculators, etc., which do not meet the capitalization threshold shall be assigned, tagged and tracked in order to prevent theft and loss and maintain an inventory that tracks assignment, transfers and disposals.

Depreciation

Property, plant and equipment of the School District shall be depreciated on a straight-line basis as noted below. Assets whose service potential does not diminish with time or use, like works of art, shall not be depreciated. Accurate depreciation methods and estimated useful life is critical in correctly determining the district's financial performance for GASB #34 reporting. Estimated useful lives shall be as accurate as possible and consider physical wear and tear, technical obsolescence, and conform to any government regulations.

<u>Type of Capital Asset</u>	<u>Years</u>
Site Improvements	15-20
Building and Building Improvements	15-45
Machinery and Equipment	5-20

Plant and equipment in the Proprietary Funds (Food Service Fund) are being depreciated on a straight-line basis over an estimated 12-year life. Computers and Point-of-Service Systems in the Food Service Fund are being depreciate on a straight-line basis over a 7-year life.

Asset Valuation

Assets are reported on the Balance Sheet using the historical cost valuation method. Historical cost is the amount actually paid for the asset, as evidenced by checks and other documents, net of any rebate or discount. This is ordinarily adjusted over time for amortization, such as depreciation. Historical cost is the valuation measurement generally used for plant and equipment. All assets are adequately insured. If historical costs are not available due to inadequate records, reporting should be based on estimates at time of purchase.

Disposal of Fixed Assets

When purchasing a replacement item (object code 76x) or disposing of an obsolete item, appropriate forms must be filled out and submitted to Purchasing. These forms are located on the district intranet. At month end Purchasing will run a disposal report and submit it to the Business Office/Superintendent's Office to be included on the board agenda for formal disposal approval. The Business Manager or designee will maintain a copy of the report, agenda, and paperwork from specific school buildings including any identification of disposals of assets purchased through federal and state funding programs.

Fixed Asset Recertification Process

Periodically (fiscal year end), a listing of fixed assets will be provided to each property custodian for review. Periodically, a selected appraisal company (American Appraisal) will provide a re-certification of building replacement costs for insurance purposes.

Fixed Asset Reports

The following reports will be generated for audit purposes:

- Yearly additions, including depreciation
- Yearly disposal listing
- Beginning and ending cost of assets
- Total asset value
- Depreciation reconciliation

Property Theft Reporting

All stolen property must be reported via a district Property Loss Form (available on district intranet). All forms must be signed by the building supervisor or appropriate district administrator and forwarded to Purchasing. The district insurance carrier will be contacted for further direction.

<u>Val Number</u>	<u>Description</u>	<u>Justification</u>
12195	<p>REG: Current Year AFR Beginning Fund Balance must equal Prior Year AFR Ending Fund Balance. Justifications to this error must fully explain the situation that prompted a fund balance restatement. "Auditor Adjustment" is not a sufficient justification.</p> <p>Total Govt Funds, Beg Bal: \$49,340,429.00 PY Ending Bal, Govt Funds: \$48,855,500.00</p>	<p>The District made a change in accounting processes for some obligations moving from AP liability accounts (i.e. real estate tax appeals) to assigned fund balance, which required a PY adjustment to beginning fund balance as of 7/1/21</p>
12196	<p>REG - Fund 10: Current Year AFR Beginning Fund Balance must equal Prior Year AFR Ending Fund Balance. Justifications to this error must fully explain the situation that prompted a fund balance restatement. "Auditor Adjustment" is not a sufficient justification.</p> <p>REG Fund 10, Beg Fund Bal: \$22,357,013.00 PY Ending Fund Balance: \$21,872,084.00</p>	<p>The District made a change in accounting processes for some obligations moving from AP liability accounts (i.e. real estate tax appeals) to assigned fund balance, which required a PY adjustment to beginning fund balance as of 7/1/21</p>
30145	<p>Revenue Detail – Fund 32: Revenue has been entered in account 6991 – Refunds of Prior Year Expenditures. Please provide a description of the refund and verify that the initial expenditure was made from Fund 32.</p> <p>Revenue Detail 6991, Fund 32: \$39,462.88</p>	<p>Amount was balance of Air Quality Improvement project paid for in PY from Fund 32 that was included in ESSER II Expenditures in 2021-22 for ESSER II Reimbursement, first portion was reimbursed in 20-21 by ESSER I.</p>
42420	<p>Expenditure Detail: Total current year 2700-513 expenditure varies from prior year by 10%. Correct the data or enter a justification.</p> <p>2700-513, AFR Exp Detail: \$498,685.85 2700-513, PY AFR Amount: \$217,546.08</p>	<p>With the lingering effects of COVID, in school vs. remote instruction, transportation costs, specifically McKinney Vento and some special education related transportation declined in 2020-21 but has returned to pre-pandemic levels.</p>
50480	<p>SESS - 2700 Student Transportation Services: SESS Schedule amounts for Special Education vary from prior year by 40% or more. Correct the data or enter a justification.</p> <p>SESS Schedule 2700: \$2,004,568.02 Prior Year SESS Schedule 2700: \$1,429,122.58</p>	<p>In 2020-21, overall transportation costs and related Special Education costs including IU Deduction for Special Education Transportation were lower as a result of the lingering effects of the pandemic. Transportation rebounded in 2021-22.</p>

LEA : 123463603 Hatboro-Horsham SD

Printed 11/30/2022 4:02:24 PM

Amounts Expressed in Whole Dollars		<u>General Fund</u> <u>(10)</u>	<u>Student Sponsored</u> <u>Activity Fund</u> <u>(21)</u>	<u>Public Purpose Trust</u> <u>(27)</u>	<u>Other Compt Approved</u> <u>(28)</u>	<u>Athletic / Activity</u> <u>(29)</u>
Assets And Deferred Outflows Of Resources						
Assets						
0100	Cash and Cash Equivalents	210				
0110	Investments	36,805,981				
0120	Taxes Receivable	1,738,772				
0130	Due From Other Funds	130,855				
0141	Due From Other Governments					
0142	State Revenue Receivable	2,984,358				
0143	Federal Revenue Receivable	1,980,889				
0145	Other Intergovernmental Revenue Receivable					
0146	Due from Primary Government					
0147	Due from Component Unit					
0150	Other Receivables	41,704				
0170	Inventories					
0180	Prepaid Expenses (Expenditures)					
0190	Other Current Assets	6,913				
Total Assets		\$43,689,682				
0910	Deferred Outflows of Resources					
Total Assets And Deferred Outflows Of Resources		\$43,689,682				

LEA : 123463603 Hatboro-Horsham SD

Printed 11/30/2022 4:02:24 PM

Amounts Expressed in Whole Dollars		<u>Capital Reserve (690.</u> <u>1850)</u> <u>(31)</u>	<u>Capital Reserve (1431)</u> <u>(32)</u>	<u>Other Capital Projects</u> <u>Fund</u> <u>(39)</u>	<u>Debt Service</u> <u>(40)</u>	<u>Permanent</u> <u>(90)</u>
Assets And Deferred Outflows Of Resources						
Assets						
0100	Cash and Cash Equivalents					
0110	Investments		9,609,170	10,161,923	10,926,718	
0120	Taxes Receivable					
0130	Due From Other Funds		2,600,292		1,000,000	
0141	Due From Other Governments					
0142	State Revenue Receivable					
0143	Federal Revenue Receivable					
0145	Other Intergovernmental Revenue Receivable					
0146	Due from Primary Government					
0147	Due from Component Unit					
0150	Other Receivables					
0170	Inventories					
0180	Prepaid Expenses (Expenditures)					
0190	Other Current Assets					
Total Assets			\$12,209,462	\$10,161,923	\$11,926,718	
0910	Deferred Outflows of Resources					
Total Assets And Deferred Outflows Of Resources			\$12,209,462	\$10,161,923	\$11,926,718	

LEA : 123463603 Hatboro-Horsham SD

Printed 11/30/2022 4:02:24 PM

Amounts Expressed in Whole Dollars		<u>Total Governmental</u> <u>Funds</u>
Assets And Deferred Outflows Of Resources		
Assets		
0100 Cash and Cash Equivalents		210
0110 Investments		67,503,792
0120 Taxes Receivable		1,738,772
0130 Due From Other Funds		3,731,147
0141 Due From Other Governments		
0142 State Revenue Receivable		2,984,358
0143 Federal Revenue Receivable		1,980,889
0145 Other Intergovernmental Revenue Receivable		
0146 Due from Primary Government		
0147 Due from Component Unit		
0150 Other Receivables		41,704
0170 Inventories		
0180 Prepaid Expenses (Expenditures)		
0190 Other Current Assets		6,913
Total Assets		\$77,987,785
0910 Deferred Outflows of Resources		
Total Assets And Deferred Outflows Of Resources		\$77,987,785

Amounts Expressed in Whole Dollars	<u>General Fund</u> <u>(10)</u>	<u>Student Sponsored</u> <u>Activity Fund</u> <u>(21)</u>	<u>Public Purpose Trust</u> <u>(27)</u>	<u>Other Compt Approved</u> <u>(28)</u>	<u>Athletic / Activity</u> <u>(29)</u>
Liabilities And Deferred Inflows Of Resources And Fund Balances					
Liabilities					
0400 Due to Other Funds	4,300,165				
0411 Due to Other Governments					
0412 Due to Primary Government					
0413 Due to Component Unit					
0420 Accounts Payable	1,938,984				
0430 Contracts Payable					
0440 Current Portion of Long-Term Debt					
0450 Short-Term Payables					
0461 Accrued Salaries and Benefits	11,838,982				
0462 Payroll Deductions and Withholding					
0480 Unearned Revenues	33,083				
0490 Other Current Liabilities					
Total Liabilities	\$18,111,214				
0950 Deferred Inflows of Resources	1,738,772				
Fund Balances					
0810 Nonspendable Fund Balance					
0820 Restricted Fund Balance	632,340				
0830 Committed Fund Balance	11,413,951				
0840 Assigned Fund Balance	3,280,088				
0850 Unassigned Fund Balance	8,513,317				
Total Fund Balances	\$23,839,696				
Total Liabilities, Deferred Inflows Of Resources And Fund Balances	\$43,689,682				

Amounts Expressed in Whole Dollars		<u>Capital Reserve (690.</u> <u>1850)</u> <u>(31)</u>	<u>Capital Reserve (1431)</u> <u>(32)</u>	<u>Other Capital Projects</u> <u>Fund</u> <u>(39)</u>	<u>Debt Service</u> <u>(40)</u>	<u>Permanent</u> <u>(90)</u>
Liabilities And Deferred Inflows Of Resources And Fund Balances						
Liabilities						
0400	Due to Other Funds					
0411	Due to Other Governments					
0412	Due to Primary Government					
0413	Due to Component Unit					
0420	Accounts Payable		127,406	288,062		
0430	Contracts Payable					
0440	Current Portion of Long-Term Debt					
0450	Short-Term Payables					
0461	Accrued Salaries and Benefits					
0462	Payroll Deductions and Withholding					
0480	Unearned Revenues					
0490	Other Current Liabilities					
Total Liabilities			\$127,406	\$288,062		
0950	Deferred Inflows of Resources					
Fund Balances						
0810	Nonspendable Fund Balance					
0820	Restricted Fund Balance					
0830	Committed Fund Balance		12,082,056	9,873,861	11,926,718	
0840	Assigned Fund Balance					
0850	Unassigned Fund Balance					
Total Fund Balances			\$12,082,056	\$9,873,861	\$11,926,718	
Total Liabilities, Deferred Inflows Of Resources And Fund Balances			\$12,209,462	\$10,161,923	\$11,926,718	

LEA : 123463603 Hatboro-Horsham SD

Printed 11/30/2022 4:02:24 PM

Amounts Expressed in Whole Dollars		<u>Total Governmental</u> <u>Funds</u>
Liabilities And Deferred Inflows Of Resources And Fund Balances		
Liabilities		
0400 Due to Other Funds		4,300,165
0411 Due to Other Governments		
0412 Due to Primary Government		
0413 Due to Component Unit		
0420 Accounts Payable		2,354,452
0430 Contracts Payable		
0440 Current Portion of Long-Term Debt		
0450 Short-Term Payables		
0461 Accrued Salaries and Benefits		11,838,982
0462 Payroll Deductions and Withholding		
0480 Unearned Revenues		33,083
0490 Other Current Liabilities		
Total Liabilities		\$18,526,682
0950 Deferred Inflows of Resources		1,738,772
Fund Balances		
0810 Nonspendable Fund Balance		
0820 Restricted Fund Balance		632,340
0830 Committed Fund Balance		45,296,586
0840 Assigned Fund Balance		3,280,088
0850 Unassigned Fund Balance		8,513,317
Total Fund Balances		\$57,722,331
Total Liabilities, Deferred Inflows Of Resources And Fund Balances		\$77,987,785

Amounts Expressed in Whole Dollars		<u>General Fund</u> <u>(10)</u>	<u>Student Sponsored</u> <u>Activity Fund</u> <u>(21)</u>	<u>Public Purpose Trust</u> <u>(27)</u>	<u>Other Compt Approved</u> <u>(28)</u>	<u>Athletic / Activity</u> <u>(29)</u>
Revenues						
6000	Revenue from Local Sources	89,544,057				
7000	Revenue from State Sources	22,481,391				
8000	Revenue from Federal Sources	3,380,467				
Total Revenues		\$115,405,915				
Expenditures						
1000	Instruction	66,449,521				
2000	Support Services	35,885,286				
3000	Operation of Non-Instructional Services	1,826,428				
4000	Facilities Acquisition, Construction and Improvement Services	18,368				
5110	Debt Service	4,056,074				
5130	Refund of Prior Year Revenues / Receipts	150,716				
5140	Leases	1,224,543				
Total Expenditures		\$109,610,936				
Excess (Deficiency) Of Revenues Over Expenditures		\$5,794,979				
Other Financing Sources (Uses)						
9110	Face Value of Bonds Issued					
9120	Proceeds from Refunding of Bonds					
9130	Bond Premiums					
9200	Proceeds from Extended-Term Financing and Leases					
9300	Interfund Transfers - IN					
9400	Sale of or Compensation for Loss of Fixed Assets	573,369				
9710	Transfers from Component Units					
9720	Transfers from Primary Governments					
9910	Other Financing Sources Not Listed in the 9000 Series					
9990	Insurance Recoveries	113,894				
5120	Debt Service – Refunded Bonds					
5150	Bond Discounts					
5200	Interfund Transfers – Out	4,999,560				
5300	Transfers Out to Component Units/Primary Governments					
Total Other Financing Sources (Uses)		(\$4,312,297)				

Amounts Expressed in Whole Dollars		<u>Capital Reserve (690.1850)</u> <u>(31)</u>	<u>Capital Reserve (1431)</u> <u>(32)</u>	<u>Other Capital Projects</u> <u>Fund</u> <u>(39)</u>	<u>Debt Service</u> <u>(40)</u>	<u>Permanent</u> <u>(90)</u>
Revenues						
6000	Revenue from Local Sources		49,159	13,236	13,870	
7000	Revenue from State Sources					
8000	Revenue from Federal Sources					
Total Revenues			\$49,159	\$13,236	\$13,870	
Expenditures						
1000	Instruction					
2000	Support Services					
3000	Operation of Non-Instructional Services					
4000	Facilities Acquisition, Construction and Improvement Services		4,794,269	3,001,848		
5110	Debt Service					
5130	Refund of Prior Year Revenues / Receipts					
5140	Leases					
Total Expenditures			\$4,794,269	\$3,001,848		
Excess (Deficiency) Of Revenues Over Expenditures			(\$4,745,110)	(\$2,988,612)	\$13,870	
Other Financing Sources (Uses)						
9110	Face Value of Bonds Issued			9,995,000		
9120	Proceeds from Refunding of Bonds					
9130	Bond Premiums			1,063,243		
9200	Proceeds from Extended-Term Financing and Leases					
9300	Interfund Transfers - IN		2,560,829		1,000,000	
9400	Sale of or Compensation for Loss of Fixed Assets					
9710	Transfers from Component Units					
9720	Transfers from Primary Governments					
9910	Other Financing Sources Not Listed in the 9000 Series					
9990	Insurance Recoveries					
5120	Debt Service – Refunded Bonds					
5150	Bond Discounts					
5200	Interfund Transfers – Out					
5300	Transfers Out to Component Units/Primary Governments					
Total Other Financing Sources (Uses)			\$2,560,829	\$11,058,243	\$1,000,000	

Amounts Expressed in Whole Dollars		<u>Total Governmental Funds</u>
Revenues		
6000	Revenue from Local Sources	89,620,322
7000	Revenue from State Sources	22,481,391
8000	Revenue from Federal Sources	3,380,467
Total Revenues		\$115,482,180
Expenditures		
1000	Instruction	66,449,521
2000	Support Services	35,885,286
3000	Operation of Non-Instructional Services	1,826,428
4000	Facilities Acquisition, Construction and Improvement Services	7,814,485
5110	Debt Service	4,056,074
5130	Refund of Prior Year Revenues / Receipts	150,716
5140	Leases	1,224,543
Total Expenditures		\$117,407,053
Excess (Deficiency) Of Revenues Over Expenditures		(\$1,924,873)
Other Financing Sources (Uses)		
9110	Face Value of Bonds Issued	9,995,000
9120	Proceeds from Refunding of Bonds	
9130	Bond Premiums	1,063,243
9200	Proceeds from Extended-Term Financing and Leases	
9300	Interfund Transfers - IN	3,560,829
9400	Sale of or Compensation for Loss of Fixed Assets	573,369
9710	Transfers from Component Units	
9720	Transfers from Primary Governments	
9910	Other Financing Sources Not Listed in the 9000 Series	
9990	Insurance Recoveries	113,894
5120	Debt Service – Refunded Bonds	
5150	Bond Discounts	
5200	Interfund Transfers – Out	4,999,560
5300	Transfers Out to Component Units/Primary Governments	
Total Other Financing Sources (Uses)		\$10,306,775

Amounts Expressed in Whole Dollars		<u>General Fund</u> <u>(10)</u>	<u>Student Sponsored</u> <u>Activity Fund</u> <u>(21)</u>	<u>Public Purpose Trust</u> <u>(27)</u>	<u>Other Compt Approved</u> <u>(28)</u>	<u>Athletic / Activity</u> <u>(29)</u>
Special And Extraordinary Items						
9920	Special Items – Gains					
9930	Extraordinary Items – Gains					
5520	Special Items – Losses					
5530	Extraordinary Items – Losses					
Net Change In Fund Balances		\$1,482,682				
Fund Balance						
0001	Fund Balance - Beginning of Fiscal Year	22,357,013				
Fund Balance - End Of Year		\$23,839,695				

Amounts Expressed in Whole Dollars		<u>Capital Reserve (690.</u> <u>1850)</u> <u>(31)</u>	<u>Capital Reserve (1431)</u> <u>(32)</u>	<u>Other Capital Projects</u> <u>Fund</u> <u>(39)</u>	<u>Debt Service</u> <u>(40)</u>	<u>Permanent</u> <u>(90)</u>
Special And Extraordinary Items						
9920 Special Items – Gains						
9930 Extraordinary Items – Gains						
5520 Special Items – Losses						
5530 Extraordinary Items – Losses						
Net Change In Fund Balances			(\$2,184,281)	\$8,069,631	\$1,013,870	
Fund Balance						
0001 Fund Balance - Beginning of Fiscal Year			14,266,336	1,804,232	10,912,848	
Fund Balance - End Of Year			\$12,082,055	\$9,873,863	\$11,926,718	

Amounts Expressed in Whole Dollars		<u>Total Governmental</u> <u>Funds</u>
Special And Extraordinary Items		
9920	Special Items – Gains	
9930	Extraordinary Items – Gains	
5520	Special Items – Losses	
5530	Extraordinary Items – Losses	
Net Change In Fund Balances		\$8,381,902
Fund Balance		
0001	Fund Balance - Beginning of Fiscal Year	49,340,429
Fund Balance - End Of Year		\$57,722,331

Amounts Expressed in Whole Dollars		<u>Food Service</u> <u>(51)</u>	<u>Child Care</u> <u>Operations</u> <u>(52)</u>	<u>Other Enterprise</u> <u>(58)</u>	<u>TOTAL</u>	<u>Internal Service</u> <u>(60)</u>
Assets And Deferred Outflows Of Resources						
Current Assets						
0100	Cash and Cash Equivalents	2,237,663	1,276,311		3,513,974	1,506,273
0110	Investments					
0130	Due From Other Funds	58,671	37,329		96,000	658,649
0141	Due From Other Governments					
0142	State Revenue Receivable					
0143	Federal Revenue Receivable	180,704			180,704	
0146	Due from Primary Government					
0147	Due from Component Unit					
0150	Other Receivables		14,566		14,566	63,162
0170	Inventories	81,524			81,524	
0180	Prepaid Expenses (Expenditures)		92,875		92,875	
0190	Other Current Assets					
Total Current Assets		\$2,558,562	\$1,421,081		\$3,979,643	\$2,228,084
Noncurrent Assets						
0211	Land					
0212	Site Improvements (Net)					
0220	Buildings and Building Improvements (Net)					
0230	Machinery, Equipment and Furniture (Net)	39,430			39,430	
0250	Construction in Progress					
0260	Long Term Prepayments					
0290	Other Noncurrent Assets					
Total Noncurrent Assets		\$39,430			\$39,430	
0910	Deferred Outflows of Resources	463,000	390,000		853,000	
Total Assets And Deferred Outflows Of Resources		\$3,060,992	\$1,811,081		\$4,872,073	\$2,228,084

Amounts Expressed in Whole Dollars	<u>Food Service</u> <u>(51)</u>	<u>Child Care</u> <u>Operations</u> <u>(52)</u>	<u>Other Enterprise</u> <u>(58)</u>	<u>TOTAL</u>	<u>Internal Service</u> <u>(60)</u>
Liabilities And Deferred Inflows Of Resources And Net Position					
Current Liabilities					
0400 Due to Other Funds	54,806	72,146		126,952	30,795
0411 Due to Other Governments					
0413 Due to Component Unit					
0420 Accounts Payable	26,902	17,756		44,658	419,568
0430 Contracts Payable					
0440 Current Portion of Long-Term Debt					
0450 Short-Term Payables					
0461 Accrued Salaries and Benefits	57,938	92,841		150,779	
0462 Payroll Deductions and Withholding					
0480 Unearned Revenues	79,385	252,125		331,510	
0490 Other Current Liabilities					
Total Current Liabilities	\$219,031	\$434,868		\$653,899	\$450,363
Noncurrent Liabilities					
0510 Bonds Payable					
0520 Extended-Term Financing Agreements Payable					
0530 Lease Obligations					
0540 Accumulated Compensated Absences	56,875	26,425		83,300	
0550 Authority Lease Obligations					
0560 Other Post-Employment Benefits (OPEB)	190,800	196,000		386,800	
0570 Net Pension Liability	2,420,000	2,028,000		4,448,000	
0599 Other Noncurrent Liabilities					
Total Noncurrent Liabilities	\$2,667,675	\$2,250,425		\$4,918,100	
Total Liabilities	\$2,886,706	\$2,685,293		\$5,571,999	\$450,363
0950 Deferred Inflows of Resources	476,000	410,000		886,000	
Net Position					
0791 Net Investment in Capital Assets	39,430			39,430	
0008 Restricted Net Position (0792 – 0798)					859,000
0799 Unrestricted Net Position	(341,144)	(1,284,212)		(1,625,356)	918,721
Total Net Position	(\$301,714)	(\$1,284,212)		(\$1,585,926)	\$1,777,721
Total Liabilities And Deferred Inflows Of Resources And Net Position	\$3,060,992	\$1,811,081		\$4,872,073	\$2,228,084

Amounts Expressed in Whole Dollars	<u>Food Service</u> <u>(51)</u>	<u>Child Care Operations</u> <u>(52)</u>	<u>Other Enterprise</u> <u>(58)</u>	<u>TOTAL</u>	<u>Internal Service</u> <u>(60)</u>
Operating Revenues					
6600 Food Service Revenue	233,432			233,432	
0071 Charges for Services		1,659,647		1,659,647	
0072 Other Operating Revenue					11,053,524
Total Operating Revenues	\$233,432	\$1,659,647		\$1,893,079	\$11,053,524
Operating Expenses					
100 Personnel Services – Salaries	648,940	924,499		1,573,439	
200 Personnel Services – Employee Benefits	298,151	254,500		552,651	9,359,007
300 Purchased Professional and Technical Services	19,073			19,073	
400 Purchased Property Services					
500 Other Purchased Services	957,237	19,967		977,204	1,353,612
600 Supplies	121,051	100,542		221,593	
740 Depreciation	11,888			11,888	
810 Dues and Fees					2,822
880 Refunds of Prior Years' Receipts					
890 Miscellaneous Expenditures	906	100,387		101,293	
Total Operating Expenses	\$2,057,246	\$1,399,895		\$3,457,141	\$10,715,441
Operating Income (Loss)	(\$1,823,814)	\$259,752		(\$1,564,062)	\$338,083
Non Operating Revenues (Expenses)					
6500 Earnings on Investments	1,462	751		2,213	907
6920 Contributions and Donations from Private Sources					
6930 Gains or Losses on Sale of Fixed Assets					
6991 Refunds of a Prior Year Expenditure					
7000 Revenue from State Sources	88,845			88,845	
8000 Revenue from Federal Sources	3,193,255	863,441		4,056,696	
9990 Insurance Recoveries					
820 Claims and Judgments Against the LEA					
830 Interest					
TOTAL Non Operating Revenues (Expenses)	\$3,283,562	\$864,192		\$4,147,754	\$907
Income (Loss) Before Contributions And Transfers	\$1,459,748	\$1,123,944		\$2,583,692	\$338,990

Amounts Expressed in Whole Dollars	<u>Food Service</u> <u>(51)</u>	<u>Child Care Operations</u> <u>(52)</u>	<u>Other Enterprise</u> <u>(58)</u>	<u>TOTAL</u>	<u>Internal Service</u> <u>(60)</u>
Contributions, Transfers, and Special and Extraordinary Items					
5200 Interfund Transfers – Out					
5300 Transfers Out to Component Units/Primary Governments					
5520 Special Items – Losses					
5530 Extraordinary Items – Losses					
9300 Interfund Transfers - IN					1,438,731
9500 Capital Contributions					
9700 Transfers IN From Component Units/Primary Governments					
9920 Special Items – Gains					
9930 Extraordinary Items – Gains					
Change In Net Position	\$1,459,748	\$1,123,944		\$2,583,692	\$1,777,721
0002 Net Position - Beginning of Fiscal Year	(1,761,462)	(2,408,156)		(4,169,618)	
0003 Accounting Changes / Residual Equity Transfers					
Net Position - End Of Year	(\$301,714)	(\$1,284,212)		(\$1,585,926)	\$1,777,721

LEA : 123463603 Hatboro-Horsham SD

Printed 11/30/2022 4:02:55 PM

Amounts Expressed in Whole Dollars		<u>Food Service</u> <u>(51)</u>	<u>Child Care Operations</u> <u>(52)</u>	<u>Other Enterprise</u> <u>(58)</u>	<u>TOTAL</u>	<u>Internal Service(60)</u>
Cash Flows From Operating Activities						
0011	Cash Receipts From Users	181,061	1,745,439		1,926,500	10,990,362
0012	Cash Receipts From Assessments Made to Other Funds					
0013	Cash Receipts From Earnings on Investments					
0014	Cash Receipts From Other Operating Revenue					
0015	Cash Payments To Employees For Services	1,110,466	1,261,237		2,371,703	
0016	Cash Payments For Insurance Claims					10,295,873
0017	Cash Payments To Suppliers For Goods and Services	1,129,407	282,794		1,412,201	
0018	Cash Payments For Other Operating Expenses					
Net Cash Provided By (Used For) Operating Activities		(\$2,058,812)	\$201,408		(\$1,857,404)	\$694,489
Cash Flows From Non-Capital Financing Activities						
0021	Receipts From Local Sources - 6000					
0022	Receipts From State Sources - 7000	88,845			88,845	
0023	Receipts From Federal Sources -8000	3,193,255	863,441		4,056,696	
0024	Notes and Loans Received (Repaid)					
0025	Interest Paid on Notes/Loans - 5100-830					
0026	Operating Transfers In (Out)/Residual Equity Trans	(2,218)	(278,681)		(280,899)	810,877
0027	Operating Transfers In (Out) Primary Government / Comp Unit					
0028	Receipts From Refund of Prior Year Expenditures - 6991					
0029	Special and Extraordinary Gains (losses)					
0030	Receipts from Insurance Recoveries -9990					
Net Cash Prov By (Used for) Non-Capital Financing Activities		\$3,279,882	\$584,760		\$3,864,642	\$810,877
Cash Flows From Capital and Related Financing Activities						
0031	Payments For Fac Acq, Const, and Imp - 4000	(17,208)			(17,208)	
0032	Gain / (Loss) on Sale of Fixed Assets - 6930					
0033	Proceeds From Extended Term Financing - 9200					
0034	Principal Paid on Financing Agreements					
0035	Interest Paid on Financing Agreements - 5100-830					
0036	(Inc) Dec in Contributed Capital					
Net Cash Prov By (Used for) Capital and Related Financing Activities		(\$17,208)			(\$17,208)	
Cash Flows From Investing Activities						
0041	Earnings on Investments - 6500	1,462	751		2,213	907
0042	Purchase of Inv Securities / Deposits to Inv Pools					
0043	Receipts From Investment Pool Withdrawals					
0044	Proceeds from Sale and Maturity of Inv Securities					

LEA : 123463603 Hatboro-Horsham SD

Printed 11/30/2022 4:02:55 PM

0045 Loans Received (Paid)				
Net Cash Prov By (Used for) Investing Activities	\$1,462	\$751	\$2,213	\$907

LEA : 123463603 Hatboro-Horsham SD

Printed 11/30/2022 4:02:55 PM

	<u>Food Service</u> <u>(51)</u>	<u>Child Care Operations</u> <u>(52)</u>	<u>Other Enterprise</u> <u>(58)</u>	<u>TOTAL</u>	<u>Internal Service</u> <u>(60)</u>
Net Increase (Decrease) in Cash Flows	1,205,324	786,919		1,992,243	1,506,273
0004 Cash and Cash Equivalents Beginning of Year	971,152	489,392		1,460,544	
Cash and Cash Equivalents at Year End	\$2,176,476	\$1,276,311		\$3,452,787	\$1,506,273
Reconciliation of Operating Income (Loss) To Net Cash Provided by (Used For) Operating Activities					
0005 Operating Income (Loss) per REP	(1,823,814)	259,752		(1,564,062)	338,083
Adjustments					
0051 Depreciation and Net Amortization	11,888			11,888	
0052 Provision for Uncollectible Accounts					
0053 Other Adjustments					
Effect of Changes in Assets, Liabilities, Deferred Outflows and Deferred Inflows					
0054 (Inc) Dec In Accounts Receivable (0120-0150)	(45,247)	5,546		(39,701)	(63,162)
0055 Advances to Other Funds (0160)					
0056 (Inc) Dec in Inventories (0170)	(11,213)			(11,213)	
0057 (Inc) Dec in Prepaid Expenses (0180)		(73,788)		(73,788)	
0058 (Inc) Dec in Other Current or Noncurrent Assets					
0064 Deferred Outflows (0910)					
0059 Inc (Dec) in Accounts Payable (0400-0450)	(19,927)	11,890		(8,037)	419,568
0060 Inc (Dec) in Accrued Salaries/Benefits (0461)	(24,475)	2,491		(21,984)	
0065 Inc (Dec) in Net Pension Liabilities (0570)	(138,900)	(85,213)		(224,113)	
0066 Inc (Dec) in Other Postemp Benefit Oblig (0560)					
0061 Inc (Dec) in Payroll Deductions/Withholding (0462)					
0062 Inc (Dec) in Unearned Revenue (0480)	(7,124)	80,730		73,606	
0063 Inc (Dec) in Other Current or Noncurrent Liabilities					
0067 Deferred Inflows (0950)					
Total Adjustments	(\$234,998)	(\$58,344)		(\$293,342)	\$356,406
Cash Provided By (Used for) Total	(\$2,058,812)	\$201,408		(\$1,857,404)	\$694,489

COMBINED STATEMENT OF CASH FLOWS
SCHEDULE OF NONCASH INVESTING, CAPITAL, AND FINANCING ACTIVITIES

Explanation of Transaction and Balance Sheet Effect	Amount
Non Cash Activity Donated Foods	194,606
Total	\$194,606

LEA : 123463603 Hatboro-Horsham SD

Printed 11/30/2022 4:02:57 PM

Amounts Expressed in Whole Dollars		<u>Private Purpose Trust</u> <u>(71)</u>	<u>Investment Trust</u> <u>(72)</u>	<u>Pension Trust</u> <u>(73)</u>	<u>Student Activity Custodial</u> <u>(81)</u>
Assets And Deferred Outflows Of Resources					
Assets					
0100	Cash and Cash Equivalents				143,690
0110	Investments				352,928
0130	Due From Other Funds				4
0140	Due from Other Governments, Primary Government and Component Units				
0150	Other Receivables				
0170	Inventories				
0180	Prepaid Expenses (Expenditures)				
0190	Other Current Assets				
0220	Buildings and Building Improvements (Net)				
0230	Machinery, Equipment and Furniture (Net)				
Total Assets					\$496,622
0910	Deferred Outflows of Resources				
Total Assets And Deferred Outflows Of Resources					\$496,622

LEA : 123463603 Hatboro-Horsham SD

Printed 11/30/2022 4:02:57 PM

Amounts Expressed in Whole Dollars		<u>Other Custodial</u> <u>(89)</u>	<u>Fiduciary Component Units</u> <u>(98)</u>	<u>Total Fiduciary Funds</u>
Assets And Deferred Outflows Of Resources				
Assets				
0100	Cash and Cash Equivalents			143,690
0110	Investments			352,928
0130	Due From Other Funds			4
0140	Due from Other Governments, Primary Government and Component Units			
0150	Other Receivables			
0170	Inventories			
0180	Prepaid Expenses (Expenditures)			
0190	Other Current Assets			
0220	Buildings and Building Improvements (Net)			
0230	Machinery, Equipment and Furniture (Net)			
Total Assets				\$496,622
0910	Deferred Outflows of Resources			
Total Assets And Deferred Outflows Of Resources				\$496,622

LEA : 123463603 Hatboro-Horsham SD

Printed 11/30/2022 4:02:57 PM

Amounts Expressed in Whole Dollars		<u>Private Purpose Trust</u> <u>(71)</u>	<u>Investment Trust</u> <u>(72)</u>	<u>Pension Trust</u> <u>(73)</u>	<u>Student Activity Custodial</u> <u>(81)</u>
Liabilities, Deferred Inflows Of Resources And Net Position					
Liabilities					
0400	Due to Other Funds				
0410	Due to Other Governments, Primary Government and Component Units				
0420	Accounts Payable				16,999
0430	Contracts Payable				
0450	Short-Term Payables				
0460	Payroll Accruals and Withholdings				
0480	Unearned Revenues				
0490	Other Current Liabilities				
Total Liabilities					\$16,999
0950	Deferred Inflows of Resources				
Net Position					
0791	Net Investment in Capital Assets				
0009	Restricted Net Position (0792 – 0798)				479,623
0799	Unrestricted Net Position				
Total Net Position					\$479,623
Total Liabilities, Deferred Inflows Of Resources And Net Position					\$496,622

LEA : 123463603 Hatboro-Horsham SD

Printed 11/30/2022 4:02:57 PM

Amounts Expressed in Whole Dollars		<u>Other Custodial</u> <u>(89)</u>	<u>Fiduciary Component Units</u> <u>(98)</u>	<u>Total Fiduciary Funds</u>
Liabilities, Deferred Inflows Of Resources And Net Position				
Liabilities				
0400	Due to Other Funds			
0410	Due to Other Governments, Primary Government and Component Units			
0420	Accounts Payable			16,999
0430	Contracts Payable			
0450	Short-Term Payables			
0460	Payroll Accruals and Withholdings			
0480	Unearned Revenues			
0490	Other Current Liabilities			
Total Liabilities				\$16,999
0950	Deferred Inflows of Resources			
Net Position				
0791	Net Investment in Capital Assets			
0009	Restricted Net Position (0792 – 0798)			479,623
0799	Unrestricted Net Position			
Total Net Position				\$479,623
Total Liabilities, Deferred Inflows Of Resources And Net Position				\$496,622

LEA : 123463603 Hatboro-Horsham SD

Printed 11/30/2022 4:02:58 PM

Amounts Expressed in Whole Dollars	<u>Private Purpose Trust</u> <u>(71)</u>	<u>Investment Trust</u> <u>(72)</u>	<u>Pension Trust</u> <u>(73)</u>	<u>Student Activity</u> <u>Custodial</u> <u>(81)</u>	<u>Other Custodial</u> <u>(89)</u>	<u>Fiduciary Component</u> <u>Units</u> <u>(98)</u>
Additions						
0091 Gifts and Contributions						
0095 Net Investment Earnings				459		
0092 Other Additions				796,287		
Deductions						
0093 Scholarships Awarded						
0094 Other Deductions				727,376		
Change In Net Position				\$69,370		
0006 Net Position – Beginning of Fiscal Year				410,253		
0007 Net Position Held in Trust for Pension Benefits						
Net Position - End of Fiscal Year				\$479,623		

LEA : 123463603 Hatboro-Horsham SD

Printed 11/30/2022 4:02:58 PM

Amounts Expressed in Whole Dollars		<u>Total Fiduciary</u>
		<u>Funds</u>
Additions		
0091	Gifts and Contributions	
0095	Net Investment Earnings	459
0092	Other Additions	796,287
Deductions		
0093	Scholarships Awarded	
0094	Other Deductions	727,376
Change In Net Position		\$69,370
0006	Net Position – Beginning of Fiscal Year	410,253
0007	Net Position Held in Trust for Pension Benefits	
Net Position - End of Fiscal Year		\$479,623

	Revenue Reported In Current Year	Current Year Tax Accrual	Prior Year Tax Accrual	Taxes Collected In Current Year
Revenue from Local Sources				
6111 Current Real Estate Taxes	76,359,559.93			76,359,559.93
6112 Interim Real Estate Taxes	650,814.68			650,814.68
6113 Public Utility Realty Taxes	81,382.02			81,382.02
6114 Payments in Lieu of Current Taxes - State / Local	2,156.00			2,156.00
6151 Current Act 511 Earned Income Taxes	7,003,695.94			7,003,695.94
6153 Current Act 511 Real Estate Transfer Taxes	2,139,647.47			2,139,647.47
6411 Delinquent Real Estate Taxes	2,099,507.46			2,099,507.46
6500 Earnings on Investments	36,824.00			
6700 Revenues from LEA Activities	22,561.00			
6832 Federal IDEA Revenue Received as Pass Through	840,468.67			
6833 Federal ARRA IDEA Revenue Received as Pass Through	52,619.10			
6910 Rentals	8,250.00			
6920 Contributions and Donations from Private Sources	11,910.00			
6944 Receipts from Other LEAs in Pennsylvania - Education	192,651.88			
6992 Energy Efficiency Revenues and Incentives	7,921.61			
6999 Other Revenues Not Specified Above	34,087.51			
TOTAL Revenue from Local Sources	\$89,544,057.27			\$88,336,763.50

	Revenue Reported In Current Year			
<u>Revenue from State Sources</u>				
7111 Basic Education Funding-Formula	5,528,042.21			
7112 Basic Education Funding-Social Security	1,887,459.88			
7160 Tuition for Orphans Subsidy	62,950.88			
7271 Special Education funds for School-Aged Pupils	2,525,663.90			
7311 Pupil Transportation Subsidy	286,771.84			
7312 Nonpublic and Charter School Pupil Transportation Subsidy	218,295.00			
7320 Rental and Sinking Fund Payments / Building Reimbursement Subsidy	150,145.00			
7330 Health Services (Medical, Dental, Nurse, Act 25)	81,634.08			
7340 State Property Tax Reduction Allocation	2,453,987.89			
7361 School Safety and Security Grants	(335.25)			
7505 Ready to Learn Block Grant	270,230.00			
7599 Other State Revenue Not Listed Elsewhere in the 7000 Series	60,829.20			
7820 State Share of Retirement Contributions	8,955,716.55			
TOTAL Revenue from State Sources	\$22,481,391.18			

	Revenue Reported In Current Year			
Revenue from Federal Sources				
8110 Payments for Federally Impacted Areas	704,376.00			
8514 NCLB, Title I - Improving the Academic Achievement of the Disadvantaged	511,706.09			
8515 NCLB, Title II - Preparing, Training and Recruiting High Quality Teachers and Principals	97,619.98			
8516 NCLB, Title III - Language Instruction for Limited English Proficient and Immigrant Students	21,401.78			
8517 NCLB, Title IV - 21St Century Schools	11,196.61			
8690 Other Restricted Federal Grants-in-Aid Through the Commonwealth of PA	82,621.18			
8743 ESSER II - Elementary and Secondary School Emergency Relief Fund	961,324.63			
8744 ARP ESSER - Elementary and Secondary School Emergency Relief Fund	306,426.08			
8747 ARP ECF - Emergency Connectivity Fund	24,750.00			
8751 ARP ESSER Learning Loss	13,653.12			
8752 ARP ESSER Summer Programs	899.91			
8810 School-Based Access Medicaid Reimbursement Program (SBAP) Reimbursements (Access)	618,615.62			
8820 Medical Assistance Reimbursement for Administrative Claiming (Quarterly) Program	25,875.69			
TOTAL Revenue from Federal Sources	\$3,380,466.69			

					Revenue Reported In Current Year			
<u>Other Financing Sources</u>								
9400	Sale of or Compensation for Loss of Fixed Assets				573,368.64			
9990	Insurance Recoveries				113,894.42			
TOTAL Other Financing Sources					\$687,263.06			
TOTAL FROM ALL SOURCES					\$116,093,178.20	\$88,336,763.50		

LEA : 123463603 Hatboro-Horsham SD

Printed 11/30/2022 4:03:03 PM

	<u>General Fund (10)</u>	<u>Student Sponsored Activity Fund (21)</u>	<u>Public Purpose Trust (27)</u>	<u>Other Compt Approved (28)</u>	<u>Athletic / Activity (29)</u>	<u>Capital Reserve (690, 1850) (31)</u>
6000 Revenue from Local Sources						
6111 Current Real Estate Taxes	76,359,559.93					
6112 Interim Real Estate Taxes	650,814.68					
6113 Public Utility Realty Taxes	81,382.02					
6114 Payments in Lieu of Current Taxes - State / Local	2,156.00					
6151 Current Act 511 Earned Income Taxes	7,003,695.94					
6153 Current Act 511 Real Estate Transfer Taxes	2,139,647.47					
6411 Delinquent Real Estate Taxes	2,099,507.46					
6500 Earnings on Investments	36,824.00					
6700 Revenues from LEA Activities	22,561.00					
6832 Federal IDEA Revenue Received as Pass Through	840,468.67					
6833 Federal ARRA IDEA Revenue Received as Pass Through	52,619.10					
6910 Rentals	8,250.00					
6920 Contributions and Donations from Private Sources	11,910.00					
6944 Receipts from Other LEAs in Pennsylvania - Education	192,651.88					
6991 Refunds of a Prior Year Expenditure						
6992 Energy Efficiency Revenues and Incentives	7,921.61					
6999 Other Revenues Not Specified Above	34,087.51					
6000 Total Revenue from Local Sources	\$89,544,057.27					
7000 Revenue from State Sources						
7111 Basic Education Funding-Formula	5,528,042.21					
7112 Basic Education Funding-Social Security	1,887,459.88					
7160 Tuition for Orphans Subsidy	62,950.88					
7271 Special Education funds for School-Aged Pupils	2,525,663.90					
7311 Pupil Transportation Subsidy	286,771.84					
7312 Nonpublic and Charter School Pupil Transportation Subsidy	218,295.00					
7320 Rental and Sinking Fund Payments / Building Reimbursement Subsidy	150,145.00					
7330 Health Services (Medical, Dental, Nurse, Act 25)	81,634.08					
7340 State Property Tax Reduction Allocation	2,453,987.89					
7361 School Safety and Security Grants	(335.25)					
7505 Ready to Learn Block Grant	270,230.00					
7599 Other State Revenue Not Listed Elsewhere in the 7000 Series	60,829.20					
7820 State Share of Retirement Contributions	8,955,716.55					
7000 Total Revenue from State Sources	\$22,481,391.18					
8000 Revenue from Federal Sources						
8110 Payments for Federally Impacted Areas	704,376.00					

LEA : 123463603 Hatboro-Horsham SD

Printed 11/30/2022 4:03:03 PM

	<u>Capital Reserve</u> <u>(1431) (32)</u>	<u>Other Capital</u> <u>Projects Fund (39)</u>	<u>Debt Service (40)</u>	<u>Permanent (90)</u>	<u>Total</u>
6000 Revenue from Local Sources					
6111 Current Real Estate Taxes					76,359,559.93
6112 Interim Real Estate Taxes					650,814.68
6113 Public Utility Realty Taxes					81,382.02
6114 Payments in Lieu of Current Taxes - State / Local					2,156.00
6151 Current Act 511 Earned Income Taxes					7,003,695.94
6153 Current Act 511 Real Estate Transfer Taxes					2,139,647.47
6411 Delinquent Real Estate Taxes					2,099,507.46
6500 Earnings on Investments	9,696.15	13,235.53	13,870.04		73,625.72
6700 Revenues from LEA Activities					22,561.00
6832 Federal IDEA Revenue Received as Pass Through					840,468.67
6833 Federal ARRA IDEA Revenue Received as Pass Through					52,619.10
6910 Rentals					8,250.00
6920 Contributions and Donations from Private Sources					11,910.00
6944 Receipts from Other LEAs in Pennsylvania - Education					192,651.88
6991 Refunds of a Prior Year Expenditure	39,462.88				39,462.88
6992 Energy Efficiency Revenues and Incentives					7,921.61
6999 Other Revenues Not Specified Above					34,087.51
6000 Total Revenue from Local Sources	\$49,159.03	\$13,235.53	\$13,870.04		\$89,620,321.87
7000 Revenue from State Sources					
7111 Basic Education Funding-Formula					5,528,042.21
7112 Basic Education Funding-Social Security					1,887,459.88
7160 Tuition for Orphans Subsidy					62,950.88
7271 Special Education funds for School-Aged Pupils					2,525,663.90
7311 Pupil Transportation Subsidy					286,771.84
7312 Nonpublic and Charter School Pupil Transportation Subsidy					218,295.00
7320 Rental and Sinking Fund Payments / Building Reimbursement Subsidy					150,145.00
7330 Health Services (Medical, Dental, Nurse, Act 25)					81,634.08
7340 State Property Tax Reduction Allocation					2,453,987.89
7361 School Safety and Security Grants					(335.25)
7505 Ready to Learn Block Grant					270,230.00
7599 Other State Revenue Not Listed Elsewhere in the 7000 Series					60,829.20
7820 State Share of Retirement Contributions					8,955,716.55
7000 Total Revenue from State Sources					\$22,481,391.18
8000 Revenue from Federal Sources					
8110 Payments for Federally Impacted Areas					704,376.00

LEA : 123463603 Hatboro-Horsham SD

Printed 11/30/2022 4:03:03 PM

	<u>General Fund (10)</u>	<u>Student Sponsored</u> <u>Activity Fund (21)</u>	<u>Public Purpose</u> <u>Trust (27)</u>	<u>Other Compt</u> <u>Approved (28)</u>	<u>Athletic / Activity</u> <u>(29)</u>	<u>Capital Reserve</u> <u>(690, 1850) (31)</u>
8000 Revenue from Federal Sources						
8514 NCLB, Title I - Improving the Academic Achievement of the Disadvantaged	511,706.09					
8515 NCLB, Title II - Preparing, Training and Recruiting High Quality Teachers and Principals	97,619.98					
8516 NCLB, Title III - Language Instruction for Limited English Proficient and Immigrant Students	21,401.78					
8517 NCLB, Title IV - 21st Century Schools	11,196.61					
8690 Other Restricted Federal Grants-in-Aid Through the Commonwealth of PA	82,621.18					
8743 ESSER II - Elementary and Secondary School Emergency Relief Fund	961,324.63					
8744 ARP ESSER - Elementary and Secondary School Emergency Relief Fund	306,426.08					
8747 ARP ECF - Emergency Connectivity Fund	24,750.00					
8751 ARP ESSER Learning Loss	13,653.12					
8752 ARP ESSER Summer Programs	899.91					
8810 School-Based Access Medicaid Reimbursement Program (SBAP) Reimbursements (Access)	618,615.62					
8820 Medical Assistance Reimbursement for Administrative Claiming (Quarterly) Program	25,875.69					
8000 Total Revenue from Federal Sources	\$3,380,466.69					
9000 Other Financing Sources						
9110 Face Value of Bonds Issued						
9130 Bond Premiums						
9310 General Fund Transfers						
9400 Sale of or Compensation for Loss of Fixed Assets	573,368.64					
9990 Insurance Recoveries	113,894.42					
9000 Total Other Financing Sources	\$687,263.06					
Total From All Sources	\$116,093,178.20					

LEA : 123463603 Hatboro-Horsham SD

Printed 11/30/2022 4:03:03 PM

	<u>Capital Reserve</u> <u>(1431) (32)</u>	<u>Other Capital</u> <u>Projects Fund (39)</u>	<u>Debt Service (40)</u>	<u>Permanent (90)</u>	<u>Total</u>
8000 Revenue from Federal Sources					
8514 NCLB, Title I - Improving the Academic Achievement of the Disadvantaged					511,706.09
8515 NCLB, Title II - Preparing, Training and Recruiting High Quality Teachers and Principals					97,619.98
8516 NCLB, Title III - Language Instruction for Limited English Proficient and Immigrant Students					21,401.78
8517 NCLB, Title IV - 21st Century Schools					11,196.61
8690 Other Restricted Federal Grants-in-Aid Through the Commonwealth of PA					82,621.18
8743 ESSER II - Elementary and Secondary School Emergency Relief Fund					961,324.63
8744 ARP ESSER - Elementary and Secondary School Emergency Relief Fund					306,426.08
8747 ARP ECF - Emergency Connectivity Fund					24,750.00
8751 ARP ESSER Learning Loss					13,653.12
8752 ARP ESSER Summer Programs					899.91
8810 School-Based Access Medicaid Reimbursement Program (SBAP) Reimbursements (Access)					618,615.62
8820 Medical Assistance Reimbursement for Administrative Claiming (Quarterly) Program					25,875.69
8000 Total Revenue from Federal Sources					\$3,380,466.69
9000 Other Financing Sources					
9110 Face Value of Bonds Issued		9,995,000.00			9,995,000.00
9130 Bond Premiums		1,063,242.75			1,063,242.75
9310 General Fund Transfers	2,560,829.20		1,000,000.00		3,560,829.20
9400 Sale of or Compensation for Loss of Fixed Assets					573,368.64
9990 Insurance Recoveries					113,894.42
9000 Total Other Financing Sources	\$2,560,829.20	\$11,058,242.75	\$1,000,000.00		\$15,306,335.01
Total From All Sources	\$2,609,988.23	\$11,071,478.28	\$1,013,870.04		\$130,788,514.75

LEA : 123463603 Hatboro-Horsham SD

Printed 11/30/2022 4:03:07 PM

	<u>General Fund (10)</u>	<u>Student Sponsored Activity Fund (21)</u>	<u>Public Purpose Trust (27)</u>	<u>Other Compt Approved (28)</u>	<u>Athletic / Activity (29)</u>	<u>Capital Reserve (690. 1850) (31)</u>
Revenue from Local Sources	89,544,057.27					
Revenue from State Sources	22,481,391.18					
Revenue from Federal Sources	3,380,466.69					
Other Financing Sources	687,263.06					
Total From All Sources	\$116,093,178.20					

LEA : 123463603 Hatboro-Horsham SD

Printed 11/30/2022 4:03:07 PM

	<u>Capital Reserve (1431)</u> <u>(32)</u>	<u>Other Capital Projects</u> <u>Fund (39)</u>	<u>Debt Service (40)</u>	<u>Permanent (90)</u>	<u>Total</u>
Revenue from Local Sources	49,159.03	13,235.53	13,870.04		89,620,321.87
Revenue from State Sources					22,481,391.18
Revenue from Federal Sources					3,380,466.69
Other Financing Sources	2,560,829.20	11,058,242.75	1,000,000.00		15,306,335.01
Total From All Sources	\$2,609,988.23	\$11,071,478.28	\$1,013,870.04		\$130,788,514.75

LEA : 123463603 Hatboro-Horsham SD

Printed 11/30/2022 4:03:13 PM

General Fund (10)

1000 Instruction	Total
100 <u>Personnel Services – Salaries</u>	
100 Personnel Services – Salaries	33,794,431.09
Total Personnel Services – Salaries	\$33,794,431.09
200 <u>Personnel Services – Employee Benefits</u>	
210 Group Insurance – Contracted Provider	115,260.79
220 Social Security Contributions	2,489,972.75
230 PSERS Retirement Contributions	11,699,361.85
250 Unemployment Compensation	34,986.59
260 Workers' Compensation	120,436.59
270 Group Insurance – Self-Insurance	5,841,422.37
299 All Other Employee Benefits	264,446.89
Total Personnel Services – Employee Benefits	\$20,565,887.83
300 <u>Purchased Professional and Technical Services</u>	
322 Professional Educational Services – Ius	1,957,867.35
323 Professional Educational Services – Other Educational Agencies	696,141.34
329 Professional Educational Services – Other	4,092,309.95
330 Other Professional Services	23,051.76
Total Purchased Professional and Technical Services	\$6,769,370.40
400 <u>Purchased Property Services</u>	
430 Repairs and Maintenance Services	231,621.96
Total Purchased Property Services	\$231,621.96
500 <u>Other Purchased Services</u>	
530 Communications	265.16
549 Other Advertising/Public Relations	642.12
550 Printing and Binding	5,141.33
561 Tuition To Other School Districts Within the State	28,313.26
562 Tuition To Pennsylvania Charter Schools	1,034,659.42
563 Tuition To Nonpublic Schools	1,506,915.46
564 Tuition To Career and Technology Centers	1,329,069.00
567 Tuition To Approved Private Schools (APS) and PA Chartered Schools for the Deaf and Blind	383,004.05
568 Tuition To Private Residential Rehabilitative Institutions (PRRI) [In-State] and Detention Centers	1,000.00
569 Tuition – Other	187,718.94
580 Travel	2,490.71
594 IU Payment By Withholding for Institutionalized Children's Programs – Special Classes	398.55
Total Other Purchased Services	\$4,479,618.00
600 <u>Supplies</u>	
610 General Supplies	395,696.15
630 Food	6,629.32
640 Books and Periodicals	40,994.23
650 Supplies & Fees – Technology Related	115,107.16
Total Supplies	\$558,426.86
800 <u>Other Objects</u>	

LEA : 123463603 Hatboro-Horsham SD

Printed 11/30/2022 4:03:13 PM

General Fund (10)		
1000 Instruction		<u>Total</u>
800 <u>Other Objects</u>		
810 Dues and Fees		50,164.44
Total Other Objects		\$50,164.44
Total 1000 Instruction		\$66,449,520.58

LEA : 123463603 Hatboro-Horsham SD

Printed 11/30/2022 4:03:13 PM

General Fund (10)

1100 Regular Programs – Elementary / Secondary

	Elementary	Secondary	Federal	Total
100 Personnel Services – Salaries				
100 Personnel Services – Salaries	12,795,688.38	12,782,318.22	287,348.21	25,865,354.81
Total Personnel Services – Salaries	\$12,795,688.38	\$12,782,318.22	\$287,348.21	\$25,865,354.81
200 Personnel Services – Employee Benefits				
210 Group Insurance – Contracted Provider	56,870.74	58,390.05		115,260.79
220 Social Security Contributions	960,073.00	929,438.46	22,004.11	1,911,515.57
230 PSERS Retirement Contributions	4,511,388.75	4,366,513.04	50,692.11	8,928,593.90
250 Unemployment Compensation	17,843.16	17,143.43		34,986.59
260 Workers' Compensation	61,422.66	59,013.93		120,436.59
270 Group Insurance – Self-Insurance	2,066,089.84	2,000,462.82	48,703.60	4,115,256.26
299 All Other Employee Benefits	134,867.91	129,578.98		264,446.89
Total Personnel Services – Employee Benefits	\$7,808,556.06	\$7,560,540.71	\$121,399.82	\$15,490,496.59
300 Purchased Professional and Technical Services				
322 Professional Educational Services – Ius			299,161.80	299,161.80
323 Professional Educational Services – Other Educational Agencies	1,530.00	1,643.00		3,173.00
329 Professional Educational Services – Other	187,205.67	314,772.69	840,253.74	1,342,232.10
330 Other Professional Services		4,151.76		4,151.76
Total Purchased Professional and Technical Services	\$188,735.67	\$320,567.45	\$1,139,415.54	\$1,648,718.66
400 Purchased Property Services				
430 Repairs and Maintenance Services	77,025.88	154,596.08		231,621.96
Total Purchased Property Services	\$77,025.88	\$154,596.08		\$231,621.96
500 Other Purchased Services				
530 Communications	164.98	100.18		265.16
550 Printing and Binding	2,225.13	2,044.20		4,269.33
562 Tuition To Pennsylvania Charter Schools	330,525.36	317,563.59		648,088.95
568 Tuition To Private Residential Rehabilitative Institutions (PRRI) [In-State] and Detention Centers		760.00		760.00
569 Tuition – Other		12,644.99		12,644.99
580 Travel	377.10	722.64		1,099.74
Total Other Purchased Services	\$333,292.57	\$333,835.60		\$667,128.17
600 Supplies				
610 General Supplies	130,452.41	150,021.42	21,809.38	302,283.21
630 Food	2,867.75	3,243.12		6,110.87
640 Books and Periodicals	13,962.74	7,862.33		21,825.07
650 Supplies & Fees – Technology Related	21,749.54	20,309.85	12,525.00	54,584.39
Total Supplies	\$169,032.44	\$181,436.72	\$34,334.38	\$384,803.54
800 Other Objects				
810 Dues and Fees	36,565.94	13,272.25		49,838.19
Total Other Objects	\$36,565.94	\$13,272.25		\$49,838.19
Total 1100 Regular Programs – Elementary / Secondary	\$21,408,896.94	\$21,346,567.03	\$1,582,497.95	\$44,337,961.92

LEA : 123463603 Hatboro-Horsham SD

Printed 11/30/2022 4:03:13 PM

General Fund (10)

1110 Regular Programs

	Elementary	Secondary	Federal	Total
100 <u>Personnel Services – Salaries</u>				
100 Personnel Services – Salaries	12,795,688.38	12,782,318.22	9,765.81	25,587,772.41
Total Personnel Services – Salaries	\$12,795,688.38	\$12,782,318.22	\$9,765.81	\$25,587,772.41
200 <u>Personnel Services – Employee Benefits</u>				
210 Group Insurance – Contracted Provider	56,870.74	58,390.05		115,260.79
220 Social Security Contributions	960,073.00	929,438.46	583.52	1,890,094.98
230 PSERS Retirement Contributions	4,511,388.75	4,366,513.04	1,593.75	8,879,495.54
250 Unemployment Compensation	17,843.16	17,143.43		34,986.59
260 Workers' Compensation	61,422.66	59,013.93		120,436.59
270 Group Insurance – Self-Insurance	2,066,089.84	2,000,462.82		4,066,552.66
299 All Other Employee Benefits	134,867.91	129,578.98		264,446.89
Total Personnel Services – Employee Benefits	\$7,808,556.06	\$7,560,540.71	\$2,177.27	\$15,371,274.04
300 <u>Purchased Professional and Technical Services</u>				
322 Professional Educational Services – lus			295,682.50	295,682.50
323 Professional Educational Services – Other Educational Agencies	1,530.00	1,643.00		3,173.00
329 Professional Educational Services – Other	187,205.67	314,772.69	704,376.00	1,206,354.36
330 Other Professional Services		4,151.76		4,151.76
Total Purchased Professional and Technical Services	\$188,735.67	\$320,567.45	\$1,000,058.50	\$1,509,361.62
400 <u>Purchased Property Services</u>				
430 Repairs and Maintenance Services	77,025.88	154,596.08		231,621.96
Total Purchased Property Services	\$77,025.88	\$154,596.08		\$231,621.96
500 <u>Other Purchased Services</u>				
530 Communications	164.98	100.18		265.16
550 Printing and Binding	2,225.13	2,044.20		4,269.33
562 Tuition To Pennsylvania Charter Schools	330,525.36	317,563.59		648,088.95
568 Tuition To Private Residential Rehabilitative Institutions (PRRI) [In-State] and Detention Centers		760.00		760.00
569 Tuition – Other		12,644.99		12,644.99
580 Travel	377.10	722.64		1,099.74
Total Other Purchased Services	\$333,292.57	\$333,835.60		\$667,128.17
600 <u>Supplies</u>				
610 General Supplies	130,452.41	150,021.42		280,473.83
630 Food	2,867.75	3,243.12		6,110.87
640 Books and Periodicals	13,962.74	7,862.33		21,825.07
650 Supplies & Fees – Technology Related	21,749.54	20,309.85	12,525.00	54,584.39
Total Supplies	\$169,032.44	\$181,436.72	\$12,525.00	\$362,994.16
800 <u>Other Objects</u>				
810 Dues and Fees	36,565.94	13,272.25		49,838.19
Total Other Objects	\$36,565.94	\$13,272.25		\$49,838.19
Total 1110 Regular Programs	\$21,408,896.94	\$21,346,567.03	\$1,024,526.58	\$43,779,990.55

LEA : 123463603 Hatboro-Horsham SD

Printed 11/30/2022 4:03:13 PM

General Fund (10)

1190 Federally-Funded Regular Programs	<u>Elementary</u>	<u>Secondary</u>	<u>Federal</u>	<u>Total</u>
100 <u>Personnel Services – Salaries</u>				
100 Personnel Services – Salaries			277,582.40	277,582.40
Total Personnel Services – Salaries			\$277,582.40	\$277,582.40
200 <u>Personnel Services – Employee Benefits</u>				
220 Social Security Contributions			21,420.59	21,420.59
230 PSERS Retirement Contributions			49,098.36	49,098.36
270 Group Insurance – Self-Insurance			48,703.60	48,703.60
Total Personnel Services – Employee Benefits			\$119,222.55	\$119,222.55
300 <u>Purchased Professional and Technical Services</u>				
322 Professional Educational Services – Ius			3,479.30	3,479.30
329 Professional Educational Services – Other			135,877.74	135,877.74
Total Purchased Professional and Technical Services			\$139,357.04	\$139,357.04
600 <u>Supplies</u>				
610 General Supplies			21,809.38	21,809.38
Total Supplies			\$21,809.38	\$21,809.38
Total 1190 Federally-Funded Regular Programs			\$557,971.37	\$557,971.37

LEA : 123463603 Hatboro-Horsham SD

Printed 11/30/2022 4:03:13 PM

General Fund (10)				
1200 Special Programs – Elementary / Secondary	<u>Elementary</u>	<u>Secondary</u>	<u>Federal</u>	<u>Total</u>
100 <u>Personnel Services – Salaries</u>				
100 Personnel Services – Salaries	3,118,199.28	3,469,378.31	495,654.08	7,083,231.67
Total Personnel Services – Salaries	\$3,118,199.28	\$3,469,378.31	\$495,654.08	\$7,083,231.67
200 <u>Personnel Services – Employee Benefits</u>				
220 Social Security Contributions	220,934.34	259,492.12	36,340.22	516,766.68
230 PSERS Retirement Contributions	1,141,003.13	1,334,233.50	749.83	2,475,986.46
270 Group Insurance – Self-Insurance	732,793.06	836,265.03	15,999.57	1,585,057.66
Total Personnel Services – Employee Benefits	\$2,094,730.53	\$2,429,990.65	\$53,089.62	\$4,577,810.80
300 <u>Purchased Professional and Technical Services</u>				
322 Professional Educational Services – Ius	803,514.48	821,973.62	28,161.00	1,653,649.10
323 Professional Educational Services – Other Educational Agencies	213,976.50	260,648.24	218,343.60	692,968.34
329 Professional Educational Services – Other	1,751,496.46	966,518.95		2,718,015.41
330 Other Professional Services			18,900.00	18,900.00
Total Purchased Professional and Technical Services	\$2,768,987.44	\$2,049,140.81	\$265,404.60	\$5,083,532.85
500 <u>Other Purchased Services</u>				
549 Other Advertising/Public Relations	331.98	310.14		642.12
550 Printing and Binding	450.82	421.18		872.00
561 Tuition To Other School Districts Within the State		23,300.64		23,300.64
562 Tuition To Pennsylvania Charter Schools	198,931.64	187,638.83		386,570.47
563 Tuition To Nonpublic Schools	535,894.73	953,581.67		1,489,476.40
567 Tuition To Approved Private Schools (APS) and PA Chartered Schools for the Deaf and Blind	190,209.41	192,794.64		383,004.05
568 Tuition To Private Residential Rehabilitative Institutions (PRRI) [In-State] and Detention Centers		240.00		240.00
569 Tuition – Other	73,655.46	101,418.49		175,073.95
580 Travel	490.32	552.91	347.74	1,390.97
594 IU Payment By Withholding for Institutionalized Children's Programs – Special Classes	206.05	192.50		398.55
Total Other Purchased Services	\$1,000,170.41	\$1,460,451.00	\$347.74	\$2,460,969.15
600 <u>Supplies</u>				
610 General Supplies	13,808.79	18,446.71	37,501.01	69,756.51
640 Books and Periodicals	2,513.58	562.90	16,010.35	19,086.83
650 Supplies & Fees – Technology Related	14,976.78	18,819.37	21,581.37	55,377.52
Total Supplies	\$31,299.15	\$37,828.98	\$75,092.73	\$144,220.86
800 <u>Other Objects</u>				
810 Dues and Fees		326.25		326.25
Total Other Objects		\$326.25		\$326.25
Total 1200 Special Programs – Elementary / Secondary	\$9,013,386.81	\$9,447,116.00	\$889,588.77	\$19,350,091.58

LEA : 123463603 Hatboro-Horsham SD

Printed 11/30/2022 4:03:13 PM

General Fund (10)

1210 Life Skills Support

	<u>Elementary</u>	<u>Secondary</u>	<u>Federal</u>	<u>Total</u>
100 <u>Personnel Services – Salaries</u>				
100 Personnel Services – Salaries	170,071.32	268,676.99	90,220.02	528,968.33
Total Personnel Services – Salaries	\$170,071.32	\$268,676.99	\$90,220.02	\$528,968.33
200 <u>Personnel Services – Employee Benefits</u>				
220 Social Security Contributions	14,836.39	16,730.39	7,093.10	38,659.88
230 PSERS Retirement Contributions	86,991.95	98,097.31		185,089.26
270 Group Insurance – Self-Insurance	62,358.68	70,319.36	2,500.00	135,178.04
Total Personnel Services – Employee Benefits	\$164,187.02	\$185,147.06	\$9,593.10	\$358,927.18
300 <u>Purchased Professional and Technical Services</u>				
323 Professional Educational Services – Other Educational Agencies		30,281.86		30,281.86
329 Professional Educational Services – Other	75,172.01	89,333.43		164,505.44
Total Purchased Professional and Technical Services	\$75,172.01	\$119,615.29		\$194,787.30
500 <u>Other Purchased Services</u>				
567 Tuition To Approved Private Schools (APS) and PA Chartered Schools for the Deaf and Blind		50,881.00		50,881.00
Total Other Purchased Services		\$50,881.00		\$50,881.00
600 <u>Supplies</u>				
610 General Supplies	3,733.82	5,490.45	31,530.60	40,754.87
640 Books and Periodicals		135.17		135.17
650 Supplies & Fees – Technology Related		199.68	15,738.66	15,938.34
Total Supplies	\$3,733.82	\$5,825.30	\$47,269.26	\$56,828.38
Total 1210 Life Skills Support	\$413,164.17	\$630,145.64	\$147,082.38	\$1,190,392.19

LEA : 123463603 Hatboro-Horsham SD

Printed 11/30/2022 4:03:13 PM

General Fund (10)

1220 Sensory Support	Elementary	Secondary	Federal	Total
100 Personnel Services – Salaries				
100 Personnel Services – Salaries	609,448.96	179,250.77		788,699.73
Total Personnel Services – Salaries	\$609,448.96	\$179,250.77		\$788,699.73
200 Personnel Services – Employee Benefits				
220 Social Security Contributions	27,167.43	30,635.62		57,803.05
230 PSERS Retirement Contributions	129,551.02	146,089.44		275,640.46
270 Group Insurance – Self-Insurance	66,197.84	74,648.62		140,846.46
Total Personnel Services – Employee Benefits	\$222,916.29	\$251,373.68		\$474,289.97
300 Purchased Professional and Technical Services				
322 Professional Educational Services – Ius	128,764.70	145,202.75		273,967.45
323 Professional Educational Services – Other Educational Agencies	906.09	1,021.76		1,927.85
329 Professional Educational Services – Other	186,994.00			186,994.00
Total Purchased Professional and Technical Services	\$316,664.79	\$146,224.51		\$462,889.30
500 Other Purchased Services				
567 Tuition To Approved Private Schools (APS) and PA Chartered Schools for the Deaf and Blind	41,760.00			41,760.00
Total Other Purchased Services	\$41,760.00			\$41,760.00
600 Supplies				
610 General Supplies	683.29	550.99		1,234.28
Total Supplies	\$683.29	\$550.99		\$1,234.28
Total 1220 Sensory Support	\$1,191,473.33	\$577,399.95		\$1,768,873.28

LEA : 123463603 Hatboro-Horsham SD

Printed 11/30/2022 4:03:13 PM

General Fund (10)

1230 Emotional Support	Elementary	Secondary	Federal	Total
100 <u>Personnel Services – Salaries</u>				
100 Personnel Services – Salaries	441,345.31	782,196.33		1,223,541.64
Total Personnel Services – Salaries	\$441,345.31	\$782,196.33		\$1,223,541.64
200 <u>Personnel Services – Employee Benefits</u>				
220 Social Security Contributions	41,748.20	47,077.76		88,825.96
230 PSERS Retirement Contributions	200,077.37	225,619.16		425,696.53
270 Group Insurance – Self-Insurance	125,052.03	141,016.12		266,068.15
Total Personnel Services – Employee Benefits	\$366,877.60	\$413,713.04		\$780,590.64
300 <u>Purchased Professional and Technical Services</u>				
322 Professional Educational Services – Ius	438,318.12	608,707.53	2,744.00	1,049,769.65
323 Professional Educational Services – Other Educational Agencies	168,656.54	190,187.17	218,143.60	576,987.31
329 Professional Educational Services – Other	486,450.67	398,144.77		884,595.44
Total Purchased Professional and Technical Services	\$1,093,425.33	\$1,197,039.47	\$220,887.60	\$2,511,352.40
500 <u>Other Purchased Services</u>				
561 Tuition To Other School Districts Within the State		23,300.64		23,300.64
563 Tuition To Nonpublic Schools	385,259.90	848,283.50		1,233,543.40
567 Tuition To Approved Private Schools (APS) and PA Chartered Schools for the Deaf and Blind	59,049.60	58,393.12		117,442.72
Total Other Purchased Services	\$444,309.50	\$929,977.26		\$1,374,286.76
600 <u>Supplies</u>				
610 General Supplies	2,719.62	1,888.28		4,607.90
640 Books and Periodicals	2,513.58			2,513.58
650 Supplies & Fees – Technology Related		67.00		67.00
Total Supplies	\$5,233.20	\$1,955.28		\$7,188.48
800 <u>Other Objects</u>				
810 Dues and Fees		326.25		326.25
Total Other Objects		\$326.25		\$326.25
Total 1230 Emotional Support	\$2,351,190.94	\$3,325,207.63	\$220,887.60	\$5,897,286.17

LEA : 123463603 Hatboro-Horsham SD

Printed 11/30/2022 4:03:13 PM

General Fund (10)

1240 Academic Support

	<u>Elementary</u>	<u>Secondary</u>	<u>Federal</u>	<u>Total</u>
100 <u>Personnel Services – Salaries</u>				
100 Personnel Services – Salaries	1,826,733.39	2,173,296.87	401,142.06	4,401,172.32
Total Personnel Services – Salaries	\$1,826,733.39	\$2,173,296.87	\$401,142.06	\$4,401,172.32
200 <u>Personnel Services – Employee Benefits</u>				
220 Social Security Contributions	131,905.37	160,118.43	28,939.11	320,962.91
230 PSERS Retirement Contributions	700,171.61	841,808.62		1,541,980.23
270 Group Insurance – Self-Insurance	465,129.18	537,149.94	13,499.57	1,015,778.69
Total Personnel Services – Employee Benefits	\$1,297,206.16	\$1,539,076.99	\$42,438.68	\$2,878,721.83
300 <u>Purchased Professional and Technical Services</u>				
323 Professional Educational Services – Other Educational Agencies	2,500.00			2,500.00
329 Professional Educational Services – Other	621,140.11	125,837.83		746,977.94
Total Purchased Professional and Technical Services	\$623,640.11	\$125,837.83		\$749,477.94
500 <u>Other Purchased Services</u>				
563 Tuition To Nonpublic Schools	81,666.00	40,865.00		122,531.00
580 Travel	490.32	552.91	347.74	1,390.97
Total Other Purchased Services	\$82,156.32	\$41,417.91	\$347.74	\$123,921.97
600 <u>Supplies</u>				
610 General Supplies	2,938.93	7,029.37	5,970.41	15,938.71
640 Books and Periodicals		427.73	16,010.35	16,438.08
650 Supplies & Fees – Technology Related	10,142.77	11,437.59	5,842.71	27,423.07
Total Supplies	\$13,081.70	\$18,894.69	\$27,823.47	\$59,799.86
Total 1240 Academic Support	\$3,842,817.68	\$3,898,524.29	\$471,751.95	\$8,213,093.92

LEA : 123463603 Hatboro-Horsham SD

Printed 11/30/2022 4:03:13 PM

General Fund (10)

1241 Learning Support – Public	Elementary	Secondary	Federal	Total
100 Personnel Services – Salaries				
100 Personnel Services – Salaries	1,777,505.69	1,784,695.81	401,142.06	3,963,343.56
Total Personnel Services – Salaries	\$1,777,505.69	\$1,784,695.81	\$401,142.06	\$3,963,343.56
200 Personnel Services – Employee Benefits				
220 Social Security Contributions	121,547.85	137,064.59	28,939.11	287,551.55
230 PSERS Retirement Contributions	652,588.35	735,897.49		1,388,485.84
270 Group Insurance – Self-Insurance	453,616.57	511,525.07	13,499.57	978,641.21
Total Personnel Services – Employee Benefits	\$1,227,752.77	\$1,384,487.15	\$42,438.68	\$2,654,678.60
300 Purchased Professional and Technical Services				
323 Professional Educational Services – Other Educational Agencies	2,500.00			2,500.00
329 Professional Educational Services – Other	621,140.11	123,458.55		744,598.66
Total Purchased Professional and Technical Services	\$623,640.11	\$123,458.55		\$747,098.66
500 Other Purchased Services				
563 Tuition To Nonpublic Schools	81,666.00	40,865.00		122,531.00
580 Travel	490.32	552.91	347.74	1,390.97
Total Other Purchased Services	\$82,156.32	\$41,417.91	\$347.74	\$123,921.97
600 Supplies				
610 General Supplies	2,938.93	6,676.14	5,970.41	15,585.48
640 Books and Periodicals		427.73	16,010.35	16,438.08
650 Supplies & Fees – Technology Related	10,142.77	11,437.59	5,842.71	27,423.07
Total Supplies	\$13,081.70	\$18,541.46	\$27,823.47	\$59,446.63
Total 1241 Learning Support – Public	\$3,724,136.59	\$3,352,600.88	\$471,751.95	\$7,548,489.42

LEA : 123463603 Hatboro-Horsham SD

Printed 11/30/2022 4:03:13 PM

General Fund (10)

1243 Gifted Support

	<u>Elementary</u>	<u>Secondary</u>	<u>Federal</u>	<u>Total</u>
100 <u>Personnel Services – Salaries</u>				
100 Personnel Services – Salaries	49,227.70	388,601.06		437,828.76
Total Personnel Services – Salaries	\$49,227.70	\$388,601.06		\$437,828.76
200 <u>Personnel Services – Employee Benefits</u>				
220 Social Security Contributions	10,357.52	23,053.84		33,411.36
230 PSERS Retirement Contributions	47,583.26	105,911.13		153,494.39
270 Group Insurance – Self-Insurance	11,512.61	25,624.87		37,137.48
Total Personnel Services – Employee Benefits	\$69,453.39	\$154,589.84		\$224,043.23
300 <u>Purchased Professional and Technical Services</u>				
329 Professional Educational Services – Other		2,379.28		2,379.28
Total Purchased Professional and Technical Services		\$2,379.28		\$2,379.28
600 <u>Supplies</u>				
610 General Supplies		353.23		353.23
Total Supplies		\$353.23		\$353.23
Total 1243 Gifted Support	\$118,681.09	\$545,923.41		\$664,604.50

LEA : 123463603 Hatboro-Horsham SD

Printed 11/30/2022 4:03:13 PM

General Fund (10)

1270 Multi-Handicapped Support	<u>Elementary</u>	<u>Secondary</u>	<u>Federal</u>	<u>Total</u>
300 <u>Purchased Professional and Technical Services</u>				
322 Professional Educational Services – lus	84,453.26			84,453.26
Total Purchased Professional and Technical Services	\$84,453.26			\$84,453.26
Total 1270 Multi-Handicapped Support	\$84,453.26			\$84,453.26

LEA : 123463603 Hatboro-Horsham SD

Printed 11/30/2022 4:03:13 PM

General Fund (10)

1280 Early Intervention Support

	<u>Elementary</u>	<u>Secondary</u>	<u>Federal</u>	<u>Total</u>
300 <u>Purchased Professional and Technical Services</u>				
322 Professional Educational Services – lus	79,123.85			79,123.85
Total Purchased Professional and Technical Services	\$79,123.85			\$79,123.85
Total 1280 Early Intervention Support	\$79,123.85			\$79,123.85

LEA : 123463603 Hatboro-Horsham SD

Printed 11/30/2022 4:03:13 PM

General Fund (10)				
1290 Special Programs - Other Support	Elementary	Secondary	Federal	Total
100 Personnel Services – Salaries				
100 Personnel Services – Salaries	70,600.30	65,957.35	4,292.00	140,849.65
Total Personnel Services – Salaries	\$70,600.30	\$65,957.35	\$4,292.00	\$140,849.65
200 Personnel Services – Employee Benefits				
220 Social Security Contributions	5,276.95	4,929.92	308.01	10,514.88
230 PSERS Retirement Contributions	24,211.18	22,618.97	749.83	47,579.98
270 Group Insurance – Self-Insurance	14,055.33	13,130.99		27,186.32
Total Personnel Services – Employee Benefits	\$43,543.46	\$40,679.88	\$1,057.84	\$85,281.18
300 Purchased Professional and Technical Services				
322 Professional Educational Services – Ius	72,854.55	68,063.34	25,417.00	166,334.89
323 Professional Educational Services – Other Educational Agencies	41,913.87	39,157.45	200.00	81,271.32
329 Professional Educational Services – Other	381,739.67	353,202.92		734,942.59
330 Other Professional Services			18,900.00	18,900.00
Total Purchased Professional and Technical Services	\$496,508.09	\$460,423.71	\$44,517.00	\$1,001,448.80
500 Other Purchased Services				
549 Other Advertising/Public Relations	331.98	310.14		642.12
550 Printing and Binding	450.82	421.18		872.00
562 Tuition To Pennsylvania Charter Schools	198,931.64	187,638.83		386,570.47
563 Tuition To Nonpublic Schools	68,968.83	64,433.17		133,402.00
567 Tuition To Approved Private Schools (APS) and PA Chartered Schools for the Deaf and Blind	89,399.81	83,520.52		172,920.33
568 Tuition To Private Residential Rehabilitative Institutions (PRRI) [In-State] and Detention Centers		240.00		240.00
569 Tuition – Other	73,655.46	101,418.49		175,073.95
594 IU Payment By Withholding for Institutionalized Children's Programs – Special Classes	206.05	192.50		398.55
Total Other Purchased Services	\$431,944.59	\$438,174.83		\$870,119.42
600 Supplies				
610 General Supplies	3,733.13	3,487.62		7,220.75
650 Supplies & Fees – Technology Related	4,834.01	7,115.10		11,949.11
Total Supplies	\$8,567.14	\$10,602.72		\$19,169.86
Total 1290 Special Programs - Other Support	\$1,051,163.58	\$1,015,838.49	\$49,866.84	\$2,116,868.91

LEA : 123463603 Hatboro-Horsham SD

Printed 11/30/2022 4:03:13 PM

General Fund (10)

1300 Vocational Education

	<u>Elementary</u>	<u>Secondary</u>	<u>Federal</u>	<u>Total</u>
100 <u>Personnel Services – Salaries</u>				
100 Personnel Services – Salaries		843,051.16		843,051.16
Total Personnel Services – Salaries		\$843,051.16		\$843,051.16
200 <u>Personnel Services – Employee Benefits</u>				
220 Social Security Contributions		61,498.39		61,498.39
230 PSERS Retirement Contributions		293,883.25		293,883.25
270 Group Insurance – Self-Insurance		140,943.51		140,943.51
Total Personnel Services – Employee Benefits		\$496,325.15		\$496,325.15
300 <u>Purchased Professional and Technical Services</u>				
329 Professional Educational Services – Other		6,693.98		6,693.98
Total Purchased Professional and Technical Services		\$6,693.98		\$6,693.98
500 <u>Other Purchased Services</u>				
564 Tuition To Career and Technology Centers		1,329,069.00		1,329,069.00
Total Other Purchased Services		\$1,329,069.00		\$1,329,069.00
600 <u>Supplies</u>				
610 General Supplies		22,669.93		22,669.93
650 Supplies & Fees – Technology Related		1,000.00		1,000.00
Total Supplies		\$23,669.93		\$23,669.93
Total 1300 Vocational Education		\$2,698,809.22		\$2,698,809.22

LEA : 123463603 Hatboro-Horsham SD

Printed 11/30/2022 4:03:13 PM

General Fund (10)

1400 Other Instructional Programs – Elementary / Secondary	Elementary	Secondary	Federal	Total
100 <u>Personnel Services – Salaries</u>				
100 Personnel Services – Salaries	1,920.00	873.45		2,793.45
Total Personnel Services – Salaries	\$1,920.00	\$873.45		\$2,793.45
200 <u>Personnel Services – Employee Benefits</u>				
220 Social Security Contributions	63.40	128.71		192.11
230 PSERS Retirement Contributions	296.42	601.82		898.24
270 Group Insurance – Self-Insurance	54.43	110.51		164.94
Total Personnel Services – Employee Benefits	\$414.25	\$841.04		\$1,255.29
300 <u>Purchased Professional and Technical Services</u>				
329 Professional Educational Services – Other		25,368.46		25,368.46
Total Purchased Professional and Technical Services		\$25,368.46		\$25,368.46
500 <u>Other Purchased Services</u>				
561 Tuition To Other School Districts Within the State	1,654.16	3,358.46		5,012.62
563 Tuition To Nonpublic Schools	5,754.89	11,684.17		17,439.06
Total Other Purchased Services	\$7,409.05	\$15,042.63		\$22,451.68
600 <u>Supplies</u>				
610 General Supplies		986.50		986.50
630 Food		518.45		518.45
640 Books and Periodicals		82.33		82.33
650 Supplies & Fees – Technology Related		4,145.25		4,145.25
Total Supplies		\$5,732.53		\$5,732.53
Total 1400 Other Instructional Programs – Elementary / Secondary	\$9,743.30	\$47,858.11		\$57,601.41

LEA : 123463603 Hatboro-Horsham SD

Printed 11/30/2022 4:03:13 PM

General Fund (10)

1430 Homebound Instruction	<u>Elementary</u>	<u>Secondary</u>	<u>Federal</u>	<u>Total</u>
100 <u>Personnel Services – Salaries</u>				
100 Personnel Services – Salaries	1,920.00	873.45		2,793.45
Total Personnel Services – Salaries	\$1,920.00	\$873.45		\$2,793.45
200 <u>Personnel Services – Employee Benefits</u>				
220 Social Security Contributions	63.40	128.71		192.11
230 PSERS Retirement Contributions	296.42	601.82		898.24
270 Group Insurance – Self-Insurance	54.43	110.51		164.94
Total Personnel Services – Employee Benefits	\$414.25	\$841.04		\$1,255.29
Total 1430 Homebound Instruction	\$2,334.25	\$1,714.49		\$4,048.74

LEA : 123463603 Hatboro-Horsham SD

Printed 11/30/2022 4:03:13 PM

General Fund (10)

1440 Alternative Regular Education Programs	<u>Elementary</u>	<u>Secondary</u>	<u>Federal</u>	<u>Total</u>
300 <u>Purchased Professional and Technical Services</u>				
329 Professional Educational Services – Other		25,368.46		25,368.46
Total Purchased Professional and Technical Services		\$25,368.46		\$25,368.46
500 <u>Other Purchased Services</u>				
561 Tuition To Other School Districts Within the State	1,654.16	3,358.46		5,012.62
563 Tuition To Nonpublic Schools	5,754.89	11,684.17		17,439.06
Total Other Purchased Services	\$7,409.05	\$15,042.63		\$22,451.68
600 <u>Supplies</u>				
610 General Supplies		986.50		986.50
630 Food		518.45		518.45
640 Books and Periodicals		82.33		82.33
650 Supplies & Fees – Technology Related		4,145.25		4,145.25
Total Supplies		\$5,732.53		\$5,732.53
Total 1440 Alternative Regular Education Programs	\$7,409.05	\$46,143.62		\$53,552.67

LEA : 123463603 Hatboro-Horsham SD

Printed 11/30/2022 4:03:13 PM

General Fund (10)

1441 Adjudicated / Court-Placed Programs	<u>Elementary</u>	<u>Secondary</u>	<u>Federal</u>	<u>Total</u>
300 <u>Purchased Professional and Technical Services</u>				
329 Professional Educational Services – Other		25,368.46		25,368.46
Total Purchased Professional and Technical Services		\$25,368.46		\$25,368.46
500 <u>Other Purchased Services</u>				
561 Tuition To Other School Districts Within the State	1,654.16	3,358.46		5,012.62
563 Tuition To Nonpublic Schools	5,754.89	11,684.17		17,439.06
Total Other Purchased Services	\$7,409.05	\$15,042.63		\$22,451.68
Total 1441 Adjudicated / Court-Placed Programs	\$7,409.05	\$40,411.09		\$47,820.14

LEA : 123463603 Hatboro-Horsham SD

Printed 11/30/2022 4:03:13 PM

General Fund (10)

1442 Alternative Education Programs	<u>Elementary</u>	<u>Secondary</u>	<u>Federal</u>	<u>Total</u>
600 <u>Supplies</u>				
610 General Supplies		986.50		986.50
630 Food		518.45		518.45
640 Books and Periodicals		82.33		82.33
650 Supplies & Fees – Technology Related		4,145.25		4,145.25
Total Supplies		\$5,732.53		\$5,732.53
Total 1442 Alternative Education Programs		\$5,732.53		\$5,732.53

LEA : 123463603 Hatboro-Horsham SD

Printed 11/30/2022 4:03:13 PM

General Fund (10)

1500 Nonpublic School Programs

	<u>Elementary</u>	<u>Secondary</u>	<u>Federal</u>	<u>Total</u>
300 <u>Purchased Professional and Technical Services</u>				
322 Professional Educational Services – lus			5,056.45	5,056.45
Total Purchased Professional and Technical Services			\$5,056.45	\$5,056.45
Total 1500 Nonpublic School Programs			\$5,056.45	\$5,056.45

LEA : 123463603 Hatboro-Horsham SD

Printed 11/30/2022 4:03:20 PM

General Fund (10)

2000 Support Services

Total

100	<u>Personnel Services – Salaries</u>	
100	Personnel Services – Salaries	16,103,845.59
Total Personnel Services – Salaries		\$16,103,845.59
200	<u>Personnel Services – Employee Benefits</u>	
210	Group Insurance – Contracted Provider	14,163.08
220	Social Security Contributions	1,177,433.41
230	PSERS Retirement Contributions	5,431,252.32
240	Tuition Reimbursement	227,237.00
270	Group Insurance – Self-Insurance	2,546,062.81
Total Personnel Services – Employee Benefits		\$9,396,148.62
300	<u>Purchased Professional and Technical Services</u>	
322	Professional Educational Services – Ius	375.00
323	Professional Educational Services – Other Educational Agencies	10,080.00
329	Professional Educational Services – Other	179,225.67
330	Other Professional Services	1,355,388.36
340	Technical Services	528,781.03
350	Security / Safety Services	158,135.55
360	Employee Training and Development Services	108,435.62
390	Other Purchased Professional and Technical Services	17,093.00
Total Purchased Professional and Technical Services		\$2,357,514.23
400	<u>Purchased Property Services</u>	
410	Cleaning Services	332,945.31
420	Utility Services	180,561.92
430	Repairs and Maintenance Services	1,253,472.56
440	Rentals	136,050.53
460	Extermination Services	7,000.00
Total Purchased Property Services		\$1,910,030.32
500	<u>Other Purchased Services</u>	
513	Contracted Carriers	498,685.85
516	Student Transportation Services From the IU	1,110,123.35
519	Student Transportation Services From Other Sources	2,250.00
520	Insurance – General	209,432.00
521	Fire Insurance	103,353.85
522	Automotive Liability Insurance	138,559.00
523	General Property and Liability Insurance	37,587.00
529	Other Insurance	4,228.00
530	Communications	206,925.57
549	Other Advertising/Public Relations	13,526.31
550	Printing and Binding	3,276.91
580	Travel	47,717.88
591	Services Purchased Locally	63,775.25
595	IU Payments By Withholding	72,825.73
596	Direct Payments To Intermediate Units	4,659.74
Total Other Purchased Services		\$2,516,926.44

LEA : 123463603 Hatboro-Horsham SD

Printed 11/30/2022 4:03:20 PM

General Fund (10)

2000 Support Services

Total

600	<u>Supplies</u>	
610	General Supplies	832,159.87
620	Energy	1,425,752.42
630	Food	6,291.65
640	Books and Periodicals	190,119.73
650	Supplies & Fees – Technology Related	437,586.28
Total Supplies		\$2,891,909.95
700	<u>Property</u>	
752	Capital Equipment – Original and Additional	68,587.05
762	Capitalized Equipment - Replacement	492,022.00
Total Property		\$560,609.05
800	<u>Other Objects</u>	
810	Dues and Fees	148,301.76
Total Other Objects		\$148,301.76
Total 2000 Support Services		\$35,885,285.96

LEA : 123463603 Hatboro-Horsham SD

Printed 11/30/2022 4:03:20 PM

General Fund (10)

2100 Support Services – Students	Elementary	Secondary	Federal	Total
100 Personnel Services – Salaries				
100 Personnel Services – Salaries	1,066,684.48	1,359,288.94		2,612,915.81
Total Personnel Services – Salaries	\$1,066,684.48	\$1,359,288.94		\$2,612,915.81
200 Personnel Services – Employee Benefits				
220 Social Security Contributions	68,977.00	109,973.49		193,439.71
230 PSERS Retirement Contributions	322,448.44	513,760.38		900,631.53
270 Group Insurance – Self-Insurance	154,702.26	242,263.98		419,749.78
Total Personnel Services – Employee Benefits	\$546,127.70	\$865,997.85		\$1,513,821.02
300 Purchased Professional and Technical Services				
322 Professional Educational Services – Ius	191.25	183.75		375.00
323 Professional Educational Services – Other Educational Agencies		10,080.00		10,080.00
329 Professional Educational Services – Other	6,212.40	6,702.60		16,095.00
330 Other Professional Services	129,433.85	118,096.11	241,117.19	492,319.03
340 Technical Services				779.93
Total Purchased Professional and Technical Services	\$135,837.50	\$135,062.46	\$241,117.19	\$519,648.96
600 Supplies				
610 General Supplies	2,049.66	1,758.27		5,308.98
630 Food				171.32
640 Books and Periodicals	183.17			183.17
650 Supplies & Fees – Technology Related		7,129.50		7,129.50
Total Supplies	\$2,232.83	\$8,887.77		\$12,792.97
800 Other Objects				
810 Dues and Fees		129.00		169.00
Total Other Objects		\$129.00		\$169.00
Total 2100 Support Services – Students	\$1,750,882.51	\$2,369,366.02	\$241,117.19	\$4,659,347.76

LEA : 123463603 Hatboro-Horsham SD

Printed 11/30/2022 4:03:20 PM

General Fund (10)

2110 Supervision of Student Services	<u>Elementary</u>	<u>Secondary</u>	<u>Federal</u>	<u>Total</u>
100 <u>Personnel Services – Salaries</u>				
100 Personnel Services – Salaries	45,228.87	37,005.44		82,234.31
Total Personnel Services – Salaries	\$45,228.87	\$37,005.44		\$82,234.31
200 <u>Personnel Services – Employee Benefits</u>				
220 Social Security Contributions	3,162.85	2,587.78		5,750.63
230 PSERS Retirement Contributions	14,305.89	11,704.81		26,010.70
270 Group Insurance – Self-Insurance	14,204.80	11,622.11		25,826.91
Total Personnel Services – Employee Benefits	\$31,673.54	\$25,914.70		\$57,588.24
300 <u>Purchased Professional and Technical Services</u>				
329 Professional Educational Services – Other	429.00	351.00		780.00
Total Purchased Professional and Technical Services	\$429.00	\$351.00		\$780.00
Total 2110 Supervision of Student Services	\$77,331.41	\$63,271.14		\$140,602.55

General Fund (10)

2119 Supervision of Student Services – All Other Supervision	<u>Elementary</u>	<u>Secondary</u>	<u>Federal</u>	<u>Total</u>
100 <u>Personnel Services – Salaries</u>				
100 Personnel Services – Salaries	45,228.87	37,005.44		82,234.31
Total Personnel Services – Salaries	\$45,228.87	\$37,005.44		\$82,234.31
200 <u>Personnel Services – Employee Benefits</u>				
220 Social Security Contributions	3,162.85	2,587.78		5,750.63
230 PSERS Retirement Contributions	14,305.89	11,704.81		26,010.70
270 Group Insurance – Self-Insurance	14,204.80	11,622.11		25,826.91
Total Personnel Services – Employee Benefits	\$31,673.54	\$25,914.70		\$57,588.24
300 <u>Purchased Professional and Technical Services</u>				
329 Professional Educational Services – Other	429.00	351.00		780.00
Total Purchased Professional and Technical Services	\$429.00	\$351.00		\$780.00
Total 2119 Supervision of Student Services – All Other Supervision	\$77,331.41	\$63,271.14		\$140,602.55

LEA : 123463603 Hatboro-Horsham SD

Printed 11/30/2022 4:03:20 PM

General Fund (10)

2120 Guidance Services	Elementary	Secondary	Federal	Total
100 Personnel Services – Salaries				
100 Personnel Services – Salaries	691,070.24	1,004,854.41		1,695,924.65
Total Personnel Services – Salaries	\$691,070.24	\$1,004,854.41		\$1,695,924.65
200 Personnel Services – Employee Benefits				
220 Social Security Contributions	41,282.61	83,816.20		125,098.81
230 PSERS Retirement Contributions	192,607.24	391,051.05		583,658.29
270 Group Insurance – Self-Insurance	89,436.59	181,583.38		271,019.97
Total Personnel Services – Employee Benefits	\$323,326.44	\$656,450.63		\$979,777.07
300 Purchased Professional and Technical Services				
323 Professional Educational Services – Other Educational Agencies		10,080.00		10,080.00
329 Professional Educational Services – Other		795.00		795.00
330 Other Professional Services			162,962.25	162,962.25
Total Purchased Professional and Technical Services		\$10,875.00	\$162,962.25	\$173,837.25
600 Supplies				
610 General Supplies	1,086.13	832.53		1,918.66
640 Books and Periodicals	183.17			183.17
650 Supplies & Fees – Technology Related		7,129.50		7,129.50
Total Supplies	\$1,269.30	\$7,962.03		\$9,231.33
800 Other Objects				
810 Dues and Fees		129.00		129.00
Total Other Objects		\$129.00		\$129.00
Total 2120 Guidance Services	\$1,015,665.98	\$1,680,271.07	\$162,962.25	\$2,858,899.30

LEA : 123463603 Hatboro-Horsham SD

Printed 11/30/2022 4:03:20 PM

General Fund (10)

2140 Psychological Services	Elementary	Secondary	Federal	Total
100 Personnel Services – Salaries				
100 Personnel Services – Salaries	330,385.37	317,429.09		647,814.46
Total Personnel Services – Salaries	\$330,385.37	\$317,429.09		\$647,814.46
200 Personnel Services – Employee Benefits				
220 Social Security Contributions	24,531.54	23,569.51		48,101.05
230 PSERS Retirement Contributions	115,535.31	111,004.52		226,539.83
270 Group Insurance – Self-Insurance	51,060.87	49,058.49		100,119.36
Total Personnel Services – Employee Benefits	\$191,127.72	\$183,632.52		\$374,760.24
300 Purchased Professional and Technical Services				
322 Professional Educational Services – Ius	191.25	183.75		375.00
329 Professional Educational Services – Other	5,783.40	5,556.60		11,340.00
330 Other Professional Services	129,433.85	118,096.11		247,529.96
Total Purchased Professional and Technical Services	\$135,408.50	\$123,836.46		\$259,244.96
600 Supplies				
610 General Supplies	963.53	925.74		1,889.27
Total Supplies	\$963.53	\$925.74		\$1,889.27
Total 2140 Psychological Services	\$657,885.12	\$625,823.81		\$1,283,708.93

LEA : 123463603 Hatboro-Horsham SD

Printed 11/30/2022 4:03:20 PM

General Fund (10)				
2160 Social Work Services	<u>Elementary</u>	<u>Secondary</u>	<u>Federal</u>	<u>Total</u>
100 <u>Personnel Services – Salaries</u>				
100 Personnel Services – Salaries				92,937.52
Total Personnel Services – Salaries				\$92,937.52
200 <u>Personnel Services – Employee Benefits</u>				
220 Social Security Contributions				7,320.19
230 PSERS Retirement Contributions				31,461.47
270 Group Insurance – Self-Insurance				2,500.00
Total Personnel Services – Employee Benefits				\$41,281.66
300 <u>Purchased Professional and Technical Services</u>				
330 Other Professional Services			78,154.94	81,826.82
Total Purchased Professional and Technical Services			\$78,154.94	\$81,826.82
600 <u>Supplies</u>				
610 General Supplies				1,501.05
630 Food				171.32
Total Supplies				\$1,672.37
800 <u>Other Objects</u>				
810 Dues and Fees				40.00
Total Other Objects				\$40.00
Total 2160 Social Work Services			\$78,154.94	\$217,758.37

LEA : 123463603 Hatboro-Horsham SD

Printed 11/30/2022 4:03:20 PM

General Fund (10)

2170 Student Accounting Services	<u>Elementary</u>	<u>Secondary</u>	<u>Federal</u>	<u>Total</u>
100 <u>Personnel Services – Salaries</u>				
100 Personnel Services – Salaries				94,004.87
Total Personnel Services – Salaries				\$94,004.87
200 <u>Personnel Services – Employee Benefits</u>				
220 Social Security Contributions				7,169.03
230 PSERS Retirement Contributions				32,961.24
270 Group Insurance – Self-Insurance				20,283.54
Total Personnel Services – Employee Benefits				\$60,413.81
300 <u>Purchased Professional and Technical Services</u>				
329 Professional Educational Services – Other				3,180.00
340 Technical Services				779.93
Total Purchased Professional and Technical Services				\$3,959.93
Total 2170 Student Accounting Services				\$158,378.61

LEA : 123463603 Hatboro-Horsham SD

Printed 11/30/2022 4:03:20 PM

General Fund (10)

2200 Support Services – Instructional Staff	Elementary	Secondary	Federal	Total
100 <u>Personnel Services – Salaries</u>				
100 Personnel Services – Salaries	1,149,688.94	666,620.30		1,816,309.24
Total Personnel Services – Salaries	\$1,149,688.94	\$666,620.30		\$1,816,309.24
200 <u>Personnel Services – Employee Benefits</u>				
220 Social Security Contributions	68,197.25	65,522.85		133,720.10
230 PSERS Retirement Contributions	315,579.61	303,203.94		618,783.55
240 Tuition Reimbursement	115,890.87	111,346.13		227,237.00
270 Group Insurance – Self-Insurance	124,711.52	119,820.87		244,532.39
Total Personnel Services – Employee Benefits	\$624,379.25	\$599,893.79		\$1,224,273.04
300 <u>Purchased Professional and Technical Services</u>				
329 Professional Educational Services – Other	12,541.70	47,457.86		59,999.56
340 Technical Services	6,694.74	6,432.21		13,126.95
360 Employee Training and Development Services	5,215.71	6,541.07	64,839.02	76,595.80
Total Purchased Professional and Technical Services	\$24,452.15	\$60,431.14	\$64,839.02	\$149,722.31
400 <u>Purchased Property Services</u>				
430 Repairs and Maintenance Services		365.00		365.00
Total Purchased Property Services		\$365.00		\$365.00
500 <u>Other Purchased Services</u>				
530 Communications	7,518.10	7,223.27		14,741.37
580 Travel	1,493.79	3,444.87	7,765.57	12,704.23
Total Other Purchased Services	\$9,011.89	\$10,668.14	\$7,765.57	\$27,445.60
600 <u>Supplies</u>				
610 General Supplies	30,993.45	32,835.41		63,828.86
640 Books and Periodicals	95,920.26	90,582.71	682.90	187,185.87
650 Supplies & Fees – Technology Related	147,157.37	159,043.29		306,200.66
Total Supplies	\$274,071.08	\$282,461.41	\$682.90	\$557,215.39
800 <u>Other Objects</u>				
810 Dues and Fees	9,864.41	9,477.58		19,341.99
Total Other Objects	\$9,864.41	\$9,477.58		\$19,341.99
Total 2200 Support Services – Instructional Staff	\$2,091,467.72	\$1,629,917.36	\$73,287.49	\$3,794,672.57

LEA : 123463603 Hatboro-Horsham SD

Printed 11/30/2022 4:03:20 PM

General Fund (10)

2220 Technology Support Services	<u>Elementary</u>	<u>Secondary</u>	<u>Federal</u>	<u>Total</u>
400 <u>Purchased Property Services</u>				
430 Repairs and Maintenance Services		365.00		365.00
Total Purchased Property Services		\$365.00		\$365.00
600 <u>Supplies</u>				
610 General Supplies		6,740.87		6,740.87
Total Supplies		\$6,740.87		\$6,740.87
Total 2220 Technology Support Services		\$7,105.87		\$7,105.87

LEA : 123463603 Hatboro-Horsham SD

Printed 11/30/2022 4:03:20 PM

General Fund (10)

2240 Computer-Assisted Instruction Support Services	<u>Elementary</u>	<u>Secondary</u>	<u>Federal</u>	<u>Total</u>
500 <u>Other Purchased Services</u>				
530 Communications	7,518.10	7,223.27		14,741.37
Total Other Purchased Services	\$7,518.10	\$7,223.27		\$14,741.37
600 <u>Supplies</u>				
610 General Supplies	1,507.25	1,448.14		2,955.39
650 Supplies & Fees – Technology Related	122,846.81	118,029.29		240,876.10
Total Supplies	\$124,354.06	\$119,477.43		\$243,831.49
Total 2240 Computer-Assisted Instruction Support Services	\$131,872.16	\$126,700.70		\$258,572.86

LEA : 123463603 Hatboro-Horsham SD

Printed 11/30/2022 4:03:20 PM

General Fund (10)

2250 School Library Services	Elementary	Secondary	Federal	Total
100 <u>Personnel Services – Salaries</u>				
100 Personnel Services – Salaries	378,098.45	58,714.56		436,813.01
Total Personnel Services – Salaries	\$378,098.45	\$58,714.56		\$436,813.01
200 <u>Personnel Services – Employee Benefits</u>				
220 Social Security Contributions	16,198.71	15,563.47		31,762.18
230 PSERS Retirement Contributions	76,296.57	73,304.55		149,601.12
270 Group Insurance – Self-Insurance	48,681.98	46,772.89		95,454.87
Total Personnel Services – Employee Benefits	\$141,177.26	\$135,640.91		\$276,818.17
300 <u>Purchased Professional and Technical Services</u>				
329 Professional Educational Services – Other	12,541.70	47,457.86		59,999.56
Total Purchased Professional and Technical Services	\$12,541.70	\$47,457.86		\$59,999.56
600 <u>Supplies</u>				
610 General Supplies	4,978.59	1,099.87		6,078.46
640 Books and Periodicals	17,591.91	15,326.04		32,917.95
650 Supplies & Fees – Technology Related	7,315.99	24,685.89		32,001.88
Total Supplies	\$29,886.49	\$41,111.80		\$70,998.29
Total 2250 School Library Services	\$561,703.90	\$282,925.13		\$844,629.03

LEA : 123463603 Hatboro-Horsham SD

Printed 11/30/2022 4:03:20 PM

General Fund (10)

2260 Instruction and Curriculum Development Services	<u>Elementary</u>	<u>Secondary</u>	<u>Federal</u>	<u>Total</u>
100 <u>Personnel Services – Salaries</u>				
100 Personnel Services – Salaries	682,841.43	607,305.49		1,290,146.92
Total Personnel Services – Salaries	\$682,841.43	\$607,305.49		\$1,290,146.92
200 <u>Personnel Services – Employee Benefits</u>				
220 Social Security Contributions	48,566.65	46,662.08		95,228.73
230 PSERS Retirement Contributions	223,148.96	214,398.03		437,546.99
270 Group Insurance – Self-Insurance	76,029.54	73,047.98		149,077.52
Total Personnel Services – Employee Benefits	\$347,745.15	\$334,108.09		\$681,853.24
300 <u>Purchased Professional and Technical Services</u>				
340 Technical Services	6,694.74	6,432.21		13,126.95
Total Purchased Professional and Technical Services	\$6,694.74	\$6,432.21		\$13,126.95
500 <u>Other Purchased Services</u>				
580 Travel	46.95	45.12		92.07
Total Other Purchased Services	\$46.95	\$45.12		\$92.07
600 <u>Supplies</u>				
610 General Supplies	24,507.61	23,546.53		48,054.14
640 Books and Periodicals	77,226.27	74,197.80		151,424.07
650 Supplies & Fees – Technology Related	16,994.57	16,328.11		33,322.68
Total Supplies	\$118,728.45	\$114,072.44		\$232,800.89
800 <u>Other Objects</u>				
810 Dues and Fees	9,864.41	9,477.58		19,341.99
Total Other Objects	\$9,864.41	\$9,477.58		\$19,341.99
Total 2260 Instruction and Curriculum Development Services	\$1,165,921.13	\$1,071,440.93		\$2,237,362.06

LEA : 123463603 Hatboro-Horsham SD

Printed 11/30/2022 4:03:20 PM

General Fund (10)

2270 Instructional Staff Professional Development Services	<u>Elementary</u>	<u>Secondary</u>	<u>Federal</u>	<u>Total</u>
200 <u>Personnel Services – Employee Benefits</u>				
230 PSERS Retirement Contributions	683.19	656.39		1,339.58
240 Tuition Reimbursement	115,890.87	111,346.13		227,237.00
Total Personnel Services – Employee Benefits	\$116,574.06	\$112,002.52		\$228,576.58
300 <u>Purchased Professional and Technical Services</u>				
360 Employee Training and Development Services	5,215.71	6,541.07	64,839.02	76,595.80
Total Purchased Professional and Technical Services	\$5,215.71	\$6,541.07	\$64,839.02	\$76,595.80
500 <u>Other Purchased Services</u>				
580 Travel	1,446.84	3,399.75	7,765.57	12,612.16
Total Other Purchased Services	\$1,446.84	\$3,399.75	\$7,765.57	\$12,612.16
600 <u>Supplies</u>				
640 Books and Periodicals	1,102.08	1,058.87	682.90	2,843.85
Total Supplies	\$1,102.08	\$1,058.87	\$682.90	\$2,843.85
Total 2270 Instructional Staff Professional Development Services	\$124,338.69	\$123,002.21	\$73,287.49	\$320,628.39

LEA : 123463603 Hatboro-Horsham SD

Printed 11/30/2022 4:03:20 PM

General Fund (10)

2290 Other Instructional Staff Services	<u>Elementary</u>	<u>Secondary</u>	<u>Federal</u>	<u>Total</u>
100 <u>Personnel Services – Salaries</u>				
100 Personnel Services – Salaries	88,749.06	600.25		89,349.31
Total Personnel Services – Salaries	\$88,749.06	\$600.25		\$89,349.31
200 <u>Personnel Services – Employee Benefits</u>				
220 Social Security Contributions	3,431.89	3,297.30		6,729.19
230 PSERS Retirement Contributions	15,450.89	14,844.97		30,295.86
Total Personnel Services – Employee Benefits	\$18,882.78	\$18,142.27		\$37,025.05
Total 2290 Other Instructional Staff Services	\$107,631.84	\$18,742.52		\$126,374.36

LEA : 123463603 Hatboro-Horsham SD

Printed 11/30/2022 4:03:20 PM

General Fund (10)

2300 Support Services – Administration	Elementary	Secondary	Federal	Total
100 Personnel Services – Salaries				
100 Personnel Services – Salaries	930,378.34	1,657,170.65		3,331,318.44
Total Personnel Services – Salaries	\$930,378.34	\$1,657,170.65		\$3,331,318.44
200 Personnel Services – Employee Benefits				
210 Group Insurance – Contracted Provider	5,665.23	8,497.85		14,163.08
220 Social Security Contributions	75,088.25	112,632.37		230,777.06
230 PSERS Retirement Contributions	351,274.11	526,911.17		1,113,223.61
270 Group Insurance – Self-Insurance	138,890.53	208,335.80		406,728.03
Total Personnel Services – Employee Benefits	\$570,918.12	\$856,377.19		\$1,764,891.78
300 Purchased Professional and Technical Services				
329 Professional Educational Services – Other	8,020.00	6,385.06		14,405.06
330 Other Professional Services				405,135.31
340 Technical Services				46,500.00
Total Purchased Professional and Technical Services	\$8,020.00	\$6,385.06		\$466,040.37
400 Purchased Property Services				
440 Rentals				1,858.18
Total Purchased Property Services				\$1,858.18
500 Other Purchased Services				
520 Insurance – General				180,135.00
549 Other Advertising/Public Relations				1,895.40
580 Travel	268.43	232.40		500.83
591 Services Purchased Locally		840.00		840.00
596 Direct Payments To Intermediate Units				4,659.74
Total Other Purchased Services	\$268.43	\$1,072.40		\$188,030.97
600 Supplies				
610 General Supplies	5,047.95	40,683.53		60,808.74
630 Food				1,236.33
640 Books and Periodicals		716.76		1,681.65
650 Supplies & Fees – Technology Related		4,650.00		4,650.00
Total Supplies	\$5,047.95	\$46,050.29		\$68,376.72
800 Other Objects				
810 Dues and Fees	4,252.28	10,357.78		63,081.38
Total Other Objects	\$4,252.28	\$10,357.78		\$63,081.38
Total 2300 Support Services – Administration	\$1,518,885.12	\$2,577,413.37		\$5,883,597.84

LEA : 123463603 Hatboro-Horsham SD

Printed 11/30/2022 4:03:20 PM

General Fund (10)

2310 Board Services

Elementary Secondary Federal Total

300 <u>Purchased Professional and Technical Services</u>				
330 Other Professional Services				34,250.00
Total Purchased Professional and Technical Services				\$34,250.00
500 <u>Other Purchased Services</u>				
520 Insurance – General				180,135.00
549 Other Advertising/Public Relations				1,895.40
596 Direct Payments To Intermediate Units				4,659.74
Total Other Purchased Services				\$186,690.14
600 <u>Supplies</u>				
610 General Supplies				5,972.80
630 Food				1,236.33
Total Supplies				\$7,209.13
800 <u>Other Objects</u>				
810 Dues and Fees				14,259.42
Total Other Objects				\$14,259.42
Total 2310 Board Services				\$242,408.69

LEA : 123463603 Hatboro-Horsham SD

Printed 11/30/2022 4:03:20 PM

General Fund (10)

2330 Tax Assessment and Collection Services	<u>Elementary</u>	<u>Secondary</u>	<u>Federal</u>	<u>Total</u>
100 <u>Personnel Services – Salaries</u>				
100 Personnel Services – Salaries				18,000.00
Total Personnel Services – Salaries				\$18,000.00
200 <u>Personnel Services – Employee Benefits</u>				
220 Social Security Contributions				1,376.96
Total Personnel Services – Employee Benefits				\$1,376.96
300 <u>Purchased Professional and Technical Services</u>				
340 Technical Services				46,500.00
Total Purchased Professional and Technical Services				\$46,500.00
Total 2330 Tax Assessment and Collection Services				\$65,876.96

LEA : 123463603 Hatboro-Horsham SD

Printed 11/30/2022 4:03:20 PM

General Fund (10)

2350 Legal and Accounting Services	<u>Elementary</u>	<u>Secondary</u>	<u>Federal</u>	<u>Total</u>
300 <u>Purchased Professional and Technical Services</u>				
330 Other Professional Services				370,885.31
Total Purchased Professional and Technical Services				\$370,885.31
Total 2350 Legal and Accounting Services				\$370,885.31

LEA : 123463603 Hatboro-Horsham SD

Printed 11/30/2022 4:03:20 PM

General Fund (10)

2360 Office of the Superintendent / Executive Director Services	<u>Elementary</u>	<u>Secondary</u>	<u>Federal</u>	<u>Total</u>
100 <u>Personnel Services – Salaries</u>				
100 Personnel Services – Salaries				725,769.45
Total Personnel Services – Salaries				\$725,769.45
200 <u>Personnel Services – Employee Benefits</u>				
220 Social Security Contributions				41,679.48
230 PSERS Retirement Contributions				235,038.33
270 Group Insurance – Self-Insurance				59,501.70
Total Personnel Services – Employee Benefits				\$336,219.51
400 <u>Purchased Property Services</u>				
440 Rentals				1,858.18
Total Purchased Property Services				\$1,858.18
600 <u>Supplies</u>				
610 General Supplies				9,104.46
640 Books and Periodicals				964.89
Total Supplies				\$10,069.35
800 <u>Other Objects</u>				
810 Dues and Fees				34,211.90
Total Other Objects				\$34,211.90
Total 2360 Office of the Superintendent / Executive Director Services				\$1,108,128.39

LEA : 123463603 Hatboro-Horsham SD

Printed 11/30/2022 4:03:20 PM

General Fund (10)

2380 Office of the Principal Services	Elementary	Secondary	Federal	Total
100 <u>Personnel Services – Salaries</u>				
100 Personnel Services – Salaries	930,378.34	1,657,170.65		2,587,548.99
Total Personnel Services – Salaries	\$930,378.34	\$1,657,170.65		\$2,587,548.99
200 <u>Personnel Services – Employee Benefits</u>				
210 Group Insurance – Contracted Provider	5,665.23	8,497.85		14,163.08
220 Social Security Contributions	75,088.25	112,632.37		187,720.62
230 PSERS Retirement Contributions	351,274.11	526,911.17		878,185.28
270 Group Insurance – Self-Insurance	138,890.53	208,335.80		347,226.33
Total Personnel Services – Employee Benefits	\$570,918.12	\$856,377.19		\$1,427,295.31
300 <u>Purchased Professional and Technical Services</u>				
329 Professional Educational Services – Other	8,020.00	6,385.06		14,405.06
Total Purchased Professional and Technical Services	\$8,020.00	\$6,385.06		\$14,405.06
500 <u>Other Purchased Services</u>				
580 Travel	268.43	232.40		500.83
591 Services Purchased Locally		840.00		840.00
Total Other Purchased Services	\$268.43	\$1,072.40		\$1,340.83
600 <u>Supplies</u>				
610 General Supplies	5,047.95	40,683.53		45,731.48
640 Books and Periodicals		716.76		716.76
650 Supplies & Fees – Technology Related		4,650.00		4,650.00
Total Supplies	\$5,047.95	\$46,050.29		\$51,098.24
800 <u>Other Objects</u>				
810 Dues and Fees	4,252.28	10,357.78		14,610.06
Total Other Objects	\$4,252.28	\$10,357.78		\$14,610.06
Total 2380 Office of the Principal Services	\$1,518,885.12	\$2,577,413.37		\$4,096,298.49

LEA : 123463603 Hatboro-Horsham SD

Printed 11/30/2022 4:03:20 PM

General Fund (10)

2400 Support Services – Pupil Health

	<u>Elementary</u>	<u>Secondary</u>	<u>Federal</u>	<u>Total</u>
100 <u>Personnel Services – Salaries</u>				
100 Personnel Services – Salaries			48,010.93	644,781.54
Total Personnel Services – Salaries			\$48,010.93	\$644,781.54
200 <u>Personnel Services – Employee Benefits</u>				
220 Social Security Contributions			3,598.78	48,892.53
230 PSERS Retirement Contributions			8,345.42	223,740.12
270 Group Insurance – Self-Insurance				63,794.80
Total Personnel Services – Employee Benefits			\$11,944.20	\$336,427.45
300 <u>Purchased Professional and Technical Services</u>				
329 Professional Educational Services – Other				11,594.41
330 Other Professional Services				442,216.53
Total Purchased Professional and Technical Services				\$453,810.94
600 <u>Supplies</u>				
610 General Supplies			69.60	25,199.68
Total Supplies			\$69.60	\$25,199.68
Total 2400 Support Services – Pupil Health			\$60,024.73	\$1,460,219.61

LEA : 123463603 Hatboro-Horsham SD

Printed 11/30/2022 4:03:20 PM

General Fund (10)

2420 Medical Services

Elementary Secondary Federal Total

300 <u>Purchased Professional and Technical Services</u>				
330 Other Professional Services				442,216.53
Total Purchased Professional and Technical Services				\$442,216.53
Total 2420 Medical Services				\$442,216.53

LEA : 123463603 Hatboro-Horsham SD

Printed 11/30/2022 4:03:20 PM

General Fund (10)

2440 Nursing Services

	<u>Elementary</u>	<u>Secondary</u>	<u>Federal</u>	<u>Total</u>
100 <u>Personnel Services – Salaries</u>				
100 Personnel Services – Salaries			48,010.93	633,837.69
Total Personnel Services – Salaries			\$48,010.93	\$633,837.69
200 <u>Personnel Services – Employee Benefits</u>				
220 Social Security Contributions			3,598.78	48,062.68
230 PSERS Retirement Contributions			8,345.42	219,942.59
270 Group Insurance – Self-Insurance				62,712.01
Total Personnel Services – Employee Benefits			\$11,944.20	\$330,717.28
300 <u>Purchased Professional and Technical Services</u>				
329 Professional Educational Services – Other				11,594.41
Total Purchased Professional and Technical Services				\$11,594.41
600 <u>Supplies</u>				
610 General Supplies			69.60	25,199.68
Total Supplies			\$69.60	\$25,199.68
Total 2440 Nursing Services			\$60,024.73	\$1,001,349.06

LEA : 123463603 Hatboro-Horsham SD

Printed 11/30/2022 4:03:20 PM

General Fund (10)

2450 Nonpublic Health Services	<u>Elementary</u>	<u>Secondary</u>	<u>Federal</u>	<u>Total</u>
100 <u>Personnel Services – Salaries</u>				
100 Personnel Services – Salaries				10,943.85
Total Personnel Services – Salaries				\$10,943.85
200 <u>Personnel Services – Employee Benefits</u>				
220 Social Security Contributions				829.85
230 PSERS Retirement Contributions				3,797.53
270 Group Insurance – Self-Insurance				1,082.79
Total Personnel Services – Employee Benefits				\$5,710.17
Total 2450 Nonpublic Health Services				\$16,654.02

LEA : 123463603 Hatboro-Horsham SD

Printed 11/30/2022 4:03:20 PM

General Fund (10)

2500 Support Services – Business	Elementary	Secondary	Federal	Total
100 <u>Personnel Services – Salaries</u>				
100 Personnel Services – Salaries				807,514.43
Total Personnel Services – Salaries				\$807,514.43
200 <u>Personnel Services – Employee Benefits</u>				
220 Social Security Contributions				58,679.93
230 PSERS Retirement Contributions				266,721.68
270 Group Insurance – Self-Insurance				130,541.31
Total Personnel Services – Employee Benefits				\$455,942.92
300 <u>Purchased Professional and Technical Services</u>				
329 Professional Educational Services – Other				4,480.00
330 Other Professional Services				4,450.00
340 Technical Services				38,853.15
Total Purchased Professional and Technical Services				\$47,783.15
400 <u>Purchased Property Services</u>				
410 Cleaning Services				1,428.00
430 Repairs and Maintenance Services				1,691.76
440 Rentals				11,664.35
Total Purchased Property Services				\$14,784.11
500 <u>Other Purchased Services</u>				
520 Insurance – General				11,649.00
530 Communications				30,692.69
549 Other Advertising/Public Relations				4,005.97
580 Travel				9,016.05
Total Other Purchased Services				\$55,363.71
600 <u>Supplies</u>				
610 General Supplies				13,285.95
630 Food				4,884.00
640 Books and Periodicals				280.95
650 Supplies & Fees – Technology Related				24,135.30
Total Supplies				\$42,586.20
700 <u>Property</u>				
752 Capital Equipment – Original and Additional				5,972.00
Total Property				\$5,972.00
800 <u>Other Objects</u>				
810 Dues and Fees				58,032.33
Total Other Objects				\$58,032.33
Total 2500 Support Services – Business				\$1,487,978.85

LEA : 123463603 Hatboro-Horsham SD

Printed 11/30/2022 4:03:20 PM

General Fund (10)

2510 Fiscal Services

	<u>Elementary</u>	<u>Secondary</u>	<u>Federal</u>	<u>Total</u>
100 <u>Personnel Services – Salaries</u>				
100 Personnel Services – Salaries				632,068.92
Total Personnel Services – Salaries				\$632,068.92
200 <u>Personnel Services – Employee Benefits</u>				
220 Social Security Contributions				45,249.52
230 PSERS Retirement Contributions				205,299.71
270 Group Insurance – Self-Insurance				104,493.63
Total Personnel Services – Employee Benefits				\$355,042.86
300 <u>Purchased Professional and Technical Services</u>				
330 Other Professional Services				4,450.00
340 Technical Services				38,853.15
Total Purchased Professional and Technical Services				\$43,303.15
400 <u>Purchased Property Services</u>				
410 Cleaning Services				1,428.00
430 Repairs and Maintenance Services				1,691.76
440 Rentals				11,664.35
Total Purchased Property Services				\$14,784.11
500 <u>Other Purchased Services</u>				
530 Communications				30,692.69
580 Travel				9,016.05
Total Other Purchased Services				\$39,708.74
600 <u>Supplies</u>				
610 General Supplies				13,285.95
630 Food				4,884.00
640 Books and Periodicals				280.95
650 Supplies & Fees – Technology Related				24,135.30
Total Supplies				\$42,586.20
700 <u>Property</u>				
752 Capital Equipment – Original and Additional				5,972.00
Total Property				\$5,972.00
800 <u>Other Objects</u>				
810 Dues and Fees				55,653.33
Total Other Objects				\$55,653.33
Total 2510 Fiscal Services				\$1,189,119.31

LEA : 123463603 Hatboro-Horsham SD

Printed 11/30/2022 4:03:20 PM

General Fund (10)

2511 Supervision of Fiscal Services - Head of Component	<u>Elementary</u>	<u>Secondary</u>	<u>Federal</u>	<u>Total</u>
100 <u>Personnel Services – Salaries</u>				
100 Personnel Services – Salaries				284,692.33
Total Personnel Services – Salaries				\$284,692.33
200 <u>Personnel Services – Employee Benefits</u>				
220 Social Security Contributions				20,336.52
230 PSERS Retirement Contributions				85,973.42
270 Group Insurance – Self-Insurance				24,020.52
Total Personnel Services – Employee Benefits				\$130,330.46
500 <u>Other Purchased Services</u>				
580 Travel				9,016.05
Total Other Purchased Services				\$9,016.05
600 <u>Supplies</u>				
610 General Supplies				2,500.00
Total Supplies				\$2,500.00
800 <u>Other Objects</u>				
810 Dues and Fees				2,139.00
Total Other Objects				\$2,139.00
Total 2511 Supervision of Fiscal Services - Head of Component				\$428,677.84

LEA : 123463603 Hatboro-Horsham SD

Printed 11/30/2022 4:03:20 PM

General Fund (10)

2513 Receiving and Disbursing Funds Services	<u>Elementary</u>	<u>Secondary</u>	<u>Federal</u>	<u>Total</u>
100 <u>Personnel Services – Salaries</u>				
100 Personnel Services – Salaries				80,497.18
Total Personnel Services – Salaries				\$80,497.18
200 <u>Personnel Services – Employee Benefits</u>				
220 Social Security Contributions				5,702.61
230 PSERS Retirement Contributions				28,125.65
270 Group Insurance – Self-Insurance				40,128.20
Total Personnel Services – Employee Benefits				\$73,956.46
Total 2513 Receiving and Disbursing Funds Services				\$154,453.64

LEA : 123463603 Hatboro-Horsham SD

Printed 11/30/2022 4:03:20 PM

General Fund (10)

2514 Payroll Services

Elementary Secondary Federal Total

100 <u>Personnel Services – Salaries</u>				
100 Personnel Services – Salaries				35,442.34
Total Personnel Services – Salaries				\$35,442.34
200 <u>Personnel Services – Employee Benefits</u>				
220 Social Security Contributions				2,604.90
230 PSERS Retirement Contributions				12,383.65
270 Group Insurance – Self-Insurance				14,384.49
Total Personnel Services – Employee Benefits				\$29,373.04
300 <u>Purchased Professional and Technical Services</u>				
340 Technical Services				54.00
Total Purchased Professional and Technical Services				\$54.00
Total 2514 Payroll Services				\$64,869.38

LEA : 123463603 Hatboro-Horsham SD

Printed 11/30/2022 4:03:20 PM

General Fund (10)

2515 Financial Accounting Services	<u>Elementary</u>	<u>Secondary</u>	<u>Federal</u>	<u>Total</u>
100 <u>Personnel Services – Salaries</u>				
100 Personnel Services – Salaries				231,437.07
Total Personnel Services – Salaries				\$231,437.07
200 <u>Personnel Services – Employee Benefits</u>				
220 Social Security Contributions				16,605.49
230 PSERS Retirement Contributions				78,816.99
270 Group Insurance – Self-Insurance				25,960.42
Total Personnel Services – Employee Benefits				\$121,382.90
600 <u>Supplies</u>				
640 Books and Periodicals				280.95
Total Supplies				\$280.95
Total 2515 Financial Accounting Services				\$353,100.92

LEA : 123463603 Hatboro-Horsham SD

Printed 11/30/2022 4:03:20 PM

General Fund (10)

2517 Property Accounting Services	<u>Elementary</u>	<u>Secondary</u>	<u>Federal</u>	<u>Total</u>
300 <u>Purchased Professional and Technical Services</u>				
330 Other Professional Services				4,450.00
Total Purchased Professional and Technical Services				\$4,450.00
Total 2517 Property Accounting Services				\$4,450.00

LEA : 123463603 Hatboro-Horsham SD

Printed 11/30/2022 4:03:20 PM

General Fund (10)				
2519 Other Fiscal Services	<u>Elementary</u>	<u>Secondary</u>	<u>Federal</u>	<u>Total</u>
300 <u>Purchased Professional and Technical Services</u>				
340 Technical Services				38,799.15
Total Purchased Professional and Technical Services				\$38,799.15
400 <u>Purchased Property Services</u>				
410 Cleaning Services				1,428.00
430 Repairs and Maintenance Services				1,691.76
440 Rentals				11,664.35
Total Purchased Property Services				\$14,784.11
500 <u>Other Purchased Services</u>				
530 Communications				30,692.69
Total Other Purchased Services				\$30,692.69
600 <u>Supplies</u>				
610 General Supplies				10,785.95
630 Food				4,884.00
650 Supplies & Fees – Technology Related				24,135.30
Total Supplies				\$39,805.25
700 <u>Property</u>				
752 Capital Equipment – Original and Additional				5,972.00
Total Property				\$5,972.00
800 <u>Other Objects</u>				
810 Dues and Fees				53,514.33
Total Other Objects				\$53,514.33
Total 2519 Other Fiscal Services				\$183,567.53

LEA : 123463603 Hatboro-Horsham SD

Printed 11/30/2022 4:03:20 PM

General Fund (10)

2520 Purchasing Services

Elementary Secondary Federal Total

100 <u>Personnel Services – Salaries</u>				
100 Personnel Services – Salaries				51,822.27
Total Personnel Services – Salaries				\$51,822.27
200 <u>Personnel Services – Employee Benefits</u>				
220 Social Security Contributions				4,155.66
230 PSERS Retirement Contributions				18,106.66
270 Group Insurance – Self-Insurance				3,703.02
Total Personnel Services – Employee Benefits				\$25,965.34
500 <u>Other Purchased Services</u>				
549 Other Advertising/Public Relations				4,005.97
Total Other Purchased Services				\$4,005.97
800 <u>Other Objects</u>				
810 Dues and Fees				779.00
Total Other Objects				\$779.00
Total 2520 Purchasing Services				\$82,572.58

LEA : 123463603 Hatboro-Horsham SD

Printed 11/30/2022 4:03:20 PM

General Fund (10)

2590 Other Support Services – Business	<u>Elementary</u>	<u>Secondary</u>	<u>Federal</u>	<u>Total</u>
100 <u>Personnel Services – Salaries</u>				
100 Personnel Services – Salaries				123,623.24
Total Personnel Services – Salaries				\$123,623.24
200 <u>Personnel Services – Employee Benefits</u>				
220 Social Security Contributions				9,274.75
230 PSERS Retirement Contributions				43,315.31
270 Group Insurance – Self-Insurance				22,344.66
Total Personnel Services – Employee Benefits				\$74,934.72
300 <u>Purchased Professional and Technical Services</u>				
329 Professional Educational Services – Other				4,480.00
Total Purchased Professional and Technical Services				\$4,480.00
500 <u>Other Purchased Services</u>				
520 Insurance – General				11,649.00
Total Other Purchased Services				\$11,649.00
800 <u>Other Objects</u>				
810 Dues and Fees				1,600.00
Total Other Objects				\$1,600.00
Total 2590 Other Support Services – Business				\$216,286.96

LEA : 123463603 Hatboro-Horsham SD

Printed 11/30/2022 4:03:20 PM

General Fund (10)

2600 Operation and Maintenance of Plant Services

	<u>Elementary</u>	<u>Secondary</u>	<u>Federal</u>	<u>Total</u>
100 <u>Personnel Services – Salaries</u>				
100 Personnel Services – Salaries			6,880.99	3,032,544.42
Total Personnel Services – Salaries			\$6,880.99	\$3,032,544.42
200 <u>Personnel Services – Employee Benefits</u>				
220 Social Security Contributions			391.24	225,344.44
230 PSERS Retirement Contributions			1,205.02	1,032,024.58
270 Group Insurance – Self-Insurance			6,262.64	761,590.22
Total Personnel Services – Employee Benefits			\$7,858.90	\$2,018,959.24
300 <u>Purchased Professional and Technical Services</u>				
329 Professional Educational Services – Other				70,891.64
330 Other Professional Services				4,669.49
350 Security / Safety Services				158,135.55
390 Other Purchased Professional and Technical Services				16,393.00
Total Purchased Professional and Technical Services				\$250,089.68
400 <u>Purchased Property Services</u>				
410 Cleaning Services				330,149.88
420 Utility Services				176,195.56
430 Repairs and Maintenance Services				591,455.26
460 Extermination Services				7,000.00
Total Purchased Property Services				\$1,104,800.70
500 <u>Other Purchased Services</u>				
521 Fire Insurance				103,353.85
523 General Property and Liability Insurance				37,587.00
529 Other Insurance				4,228.00
530 Communications				6,501.30
580 Travel				1,270.93
591 Services Purchased Locally				62,935.25
Total Other Purchased Services				\$215,876.33
600 <u>Supplies</u>				
610 General Supplies	133,848.69	305,110.50	33,156.76	472,115.95
620 Energy				1,156,466.86
Total Supplies	\$133,848.69	\$305,110.50	\$33,156.76	\$1,628,582.81
700 <u>Property</u>				
752 Capital Equipment – Original and Additional			39,462.88	62,615.05
Total Property			\$39,462.88	\$62,615.05
800 <u>Other Objects</u>				
810 Dues and Fees				40.00
Total Other Objects				\$40.00
Total 2600 Operation and Maintenance of Plant Services	\$133,848.69	\$305,110.50	\$87,359.53	\$8,313,508.23

LEA : 123463603 Hatboro-Horsham SD

Printed 11/30/2022 4:03:20 PM

General Fund (10)

2610 Supervision of Operation and Maintenance of Plant Services	<u>Elementary</u>	<u>Secondary</u>	<u>Federal</u>	<u>Total</u>
100 <u>Personnel Services – Salaries</u>				
100 Personnel Services – Salaries				233,434.37
Total Personnel Services – Salaries				\$233,434.37
200 <u>Personnel Services – Employee Benefits</u>				
220 Social Security Contributions				17,211.11
230 PSERS Retirement Contributions				79,188.78
270 Group Insurance – Self-Insurance				44,469.18
Total Personnel Services – Employee Benefits				\$140,869.07
500 <u>Other Purchased Services</u>				
580 Travel				799.99
Total Other Purchased Services				\$799.99
800 <u>Other Objects</u>				
810 Dues and Fees				40.00
Total Other Objects				\$40.00
Total 2610 Supervision of Operation and Maintenance of Plant Services				\$375,143.43

LEA : 123463603 Hatboro-Horsham SD

Printed 11/30/2022 4:03:20 PM

General Fund (10)

2619 Supervision of Operation and Maintenance of Plant Services – All Other Supervision	<u>Elementary</u>	<u>Secondary</u>	<u>Federal</u>	<u>Total</u>
100 <u>Personnel Services – Salaries</u>				
100 Personnel Services – Salaries				233,434.37
Total Personnel Services – Salaries				\$233,434.37
200 <u>Personnel Services – Employee Benefits</u>				
220 Social Security Contributions				17,211.11
230 PSERS Retirement Contributions				79,188.78
270 Group Insurance – Self-Insurance				44,469.18
Total Personnel Services – Employee Benefits				\$140,869.07
500 <u>Other Purchased Services</u>				
580 Travel				799.99
Total Other Purchased Services				\$799.99
800 <u>Other Objects</u>				
810 Dues and Fees				40.00
Total Other Objects				\$40.00
Total 2619 Supervision of Operation and Maintenance of Plant Services – All Other Supervision				\$375,143.43

LEA : 123463603 Hatboro-Horsham SD

Printed 11/30/2022 4:03:20 PM

General Fund (10)

2620 Operation of Buildings Services	Elementary	Secondary	Federal	Total
100 <u>Personnel Services – Salaries</u>				
100 Personnel Services – Salaries			6,880.99	2,535,678.37
Total Personnel Services – Salaries			\$6,880.99	\$2,535,678.37
200 <u>Personnel Services – Employee Benefits</u>				
220 Social Security Contributions			391.24	189,387.69
230 PSERS Retirement Contributions			1,205.02	863,040.87
270 Group Insurance – Self-Insurance			6,262.64	623,556.02
Total Personnel Services – Employee Benefits			\$7,858.90	\$1,675,984.58
300 <u>Purchased Professional and Technical Services</u>				
330 Other Professional Services				3,608.69
Total Purchased Professional and Technical Services				\$3,608.69
400 <u>Purchased Property Services</u>				
410 Cleaning Services				330,149.88
420 Utility Services				176,195.56
430 Repairs and Maintenance Services				497,184.42
460 Extermination Services				7,000.00
Total Purchased Property Services				\$1,010,529.86
500 <u>Other Purchased Services</u>				
521 Fire Insurance				103,353.85
523 General Property and Liability Insurance				37,587.00
529 Other Insurance				4,228.00
530 Communications				6,501.30
Total Other Purchased Services				\$151,670.15
600 <u>Supplies</u>				
610 General Supplies	105,746.86	253,041.44	33,156.76	391,945.06
620 Energy				1,156,466.86
Total Supplies	\$105,746.86	\$253,041.44	\$33,156.76	\$1,548,411.92
700 <u>Property</u>				
752 Capital Equipment – Original and Additional			39,462.88	39,462.88
Total Property			\$39,462.88	\$39,462.88
Total 2620 Operation of Buildings Services	\$105,746.86	\$253,041.44	\$87,359.53	\$6,965,346.45

LEA : 123463603 Hatboro-Horsham SD

Printed 11/30/2022 4:03:20 PM

General Fund (10)

2630 Care and Upkeep of Grounds Services	<u>Elementary</u>	<u>Secondary</u>	<u>Federal</u>	<u>Total</u>
100 <u>Personnel Services – Salaries</u>				
100 Personnel Services – Salaries				66,011.41
Total Personnel Services – Salaries				\$66,011.41
200 <u>Personnel Services – Employee Benefits</u>				
220 Social Security Contributions				4,911.42
230 PSERS Retirement Contributions				22,890.31
270 Group Insurance – Self-Insurance				18,637.37
Total Personnel Services – Employee Benefits				\$46,439.10
400 <u>Purchased Property Services</u>				
430 Repairs and Maintenance Services				87,326.34
Total Purchased Property Services				\$87,326.34
600 <u>Supplies</u>				
610 General Supplies	27,211.21	51,213.37		78,424.58
Total Supplies	\$27,211.21	\$51,213.37		\$78,424.58
Total 2630 Care and Upkeep of Grounds Services	\$27,211.21	\$51,213.37		\$278,201.43

LEA : 123463603 Hatboro-Horsham SD

Printed 11/30/2022 4:03:20 PM

General Fund (10)

2660 Safety and Security Services	Elementary	Secondary	Federal	Total
100 <u>Personnel Services – Salaries</u>				
100 Personnel Services – Salaries				145,151.69
Total Personnel Services – Salaries				\$145,151.69
200 <u>Personnel Services – Employee Benefits</u>				
220 Social Security Contributions				9,871.23
230 PSERS Retirement Contributions				48,780.78
270 Group Insurance – Self-Insurance				62,905.50
Total Personnel Services – Employee Benefits				\$121,557.51
300 <u>Purchased Professional and Technical Services</u>				
329 Professional Educational Services – Other				70,891.64
330 Other Professional Services				1,060.80
350 Security / Safety Services				158,135.55
390 Other Purchased Professional and Technical Services				16,393.00
Total Purchased Professional and Technical Services				\$246,480.99
400 <u>Purchased Property Services</u>				
430 Repairs and Maintenance Services				6,944.50
Total Purchased Property Services				\$6,944.50
500 <u>Other Purchased Services</u>				
580 Travel				470.94
591 Services Purchased Locally				62,935.25
Total Other Purchased Services				\$63,406.19
600 <u>Supplies</u>				
610 General Supplies	890.62	855.69		1,746.31
Total Supplies	\$890.62	\$855.69		\$1,746.31
700 <u>Property</u>				
752 Capital Equipment – Original and Additional				23,152.17
Total Property				\$23,152.17
Total 2660 Safety and Security Services	\$890.62	\$855.69		\$608,439.36

LEA : 123463603 Hatboro-Horsham SD

Printed 11/30/2022 4:03:20 PM

General Fund (10)

2690 Other Operation and Maintenance of Plant Services	<u>Elementary</u>	<u>Secondary</u>	<u>Federal</u>	<u>Total</u>
100 <u>Personnel Services – Salaries</u>				
100 Personnel Services – Salaries				52,268.58
Total Personnel Services – Salaries				\$52,268.58
200 <u>Personnel Services – Employee Benefits</u>				
220 Social Security Contributions				3,962.99
230 PSERS Retirement Contributions				18,123.84
270 Group Insurance – Self-Insurance				12,022.15
Total Personnel Services – Employee Benefits				\$34,108.98
Total 2690 Other Operation and Maintenance of Plant Services				\$86,377.56

LEA : 123463603 Hatboro-Horsham SD

Printed 11/30/2022 4:03:20 PM

General Fund (10)

2700 Student Transportation Services	Elementary	Secondary	Federal	Total
100 <u>Personnel Services – Salaries</u>				
100 Personnel Services – Salaries			5,358.60	2,193,559.05
Total Personnel Services – Salaries			\$5,358.60	\$2,193,559.05
200 <u>Personnel Services – Employee Benefits</u>				
220 Social Security Contributions			423.38	166,629.36
230 PSERS Retirement Contributions			968.22	728,450.82
270 Group Insurance – Self-Insurance				247,500.06
Total Personnel Services – Employee Benefits			\$1,391.60	\$1,142,580.24
300 <u>Purchased Professional and Technical Services</u>				
340 Technical Services				34,102.50
390 Other Purchased Professional and Technical Services				700.00
Total Purchased Professional and Technical Services				\$34,802.50
400 <u>Purchased Property Services</u>				
410 Cleaning Services				1,367.43
420 Utility Services				4,366.36
430 Repairs and Maintenance Services				33,921.84
Total Purchased Property Services				\$39,655.63
500 <u>Other Purchased Services</u>				
513 Contracted Carriers				498,685.85
516 Student Transportation Services From the IU				1,110,123.35
519 Student Transportation Services From Other Sources				2,250.00
522 Automotive Liability Insurance				138,559.00
580 Travel				1,146.02
Total Other Purchased Services				\$1,750,764.22
600 <u>Supplies</u>				
610 General Supplies				150,949.38
620 Energy				269,285.56
Total Supplies				\$420,234.94
700 <u>Property</u>				
762 Capitalized Equipment - Replacement				19,218.00
Total Property				\$19,218.00
800 <u>Other Objects</u>				
810 Dues and Fees				4,545.00
Total Other Objects				\$4,545.00
Total 2700 Student Transportation Services			\$6,750.20	\$5,605,359.58

LEA : 123463603 Hatboro-Horsham SD

Printed 11/30/2022 4:03:20 PM

General Fund (10)

2710 Supervision of Student Transportation Services	<u>Elementary</u>	<u>Secondary</u>	<u>Federal</u>	<u>Total</u>
100 <u>Personnel Services – Salaries</u>				
100 Personnel Services – Salaries				116,782.25
Total Personnel Services – Salaries				\$116,782.25
200 <u>Personnel Services – Employee Benefits</u>				
220 Social Security Contributions				8,763.38
230 PSERS Retirement Contributions				39,077.47
270 Group Insurance – Self-Insurance				7,896.42
Total Personnel Services – Employee Benefits				\$55,737.27
800 <u>Other Objects</u>				
810 Dues and Fees				4,325.00
Total Other Objects				\$4,325.00
Total 2710 Supervision of Student Transportation Services				\$176,844.52

LEA : 123463603 Hatboro-Horsham SD

Printed 11/30/2022 4:03:20 PM

General Fund (10)

2719 Supervision of Student Transportation Services – All Other Supervision	<u>Elementary</u>	<u>Secondary</u>	<u>Federal</u>	<u>Total</u>
100 <u>Personnel Services – Salaries</u>				
100 Personnel Services – Salaries				116,782.25
Total Personnel Services – Salaries				\$116,782.25
200 <u>Personnel Services – Employee Benefits</u>				
220 Social Security Contributions				8,763.38
230 PSERS Retirement Contributions				39,077.47
270 Group Insurance – Self-Insurance				7,896.42
Total Personnel Services – Employee Benefits				\$55,737.27
800 <u>Other Objects</u>				
810 Dues and Fees				4,325.00
Total Other Objects				\$4,325.00
Total 2719 Supervision of Student Transportation Services – All Other Supervision				\$176,844.52

LEA : 123463603 Hatboro-Horsham SD

Printed 11/30/2022 4:03:20 PM

General Fund (10)

2720 Vehicle Operation Services	<u>Elementary</u>	<u>Secondary</u>	<u>Federal</u>	<u>Total</u>
100 <u>Personnel Services – Salaries</u>				
100 Personnel Services – Salaries			5,358.60	1,422,421.60
Total Personnel Services – Salaries			\$5,358.60	\$1,422,421.60
200 <u>Personnel Services – Employee Benefits</u>				
220 Social Security Contributions			423.38	107,724.79
230 PSERS Retirement Contributions			968.22	468,916.61
270 Group Insurance – Self-Insurance				132,768.15
Total Personnel Services – Employee Benefits			\$1,391.60	\$709,409.55
300 <u>Purchased Professional and Technical Services</u>				
340 Technical Services				34,102.50
390 Other Purchased Professional and Technical Services				700.00
Total Purchased Professional and Technical Services				\$34,802.50
400 <u>Purchased Property Services</u>				
420 Utility Services				4,366.36
Total Purchased Property Services				\$4,366.36
500 <u>Other Purchased Services</u>				
513 Contracted Carriers				473,416.85
516 Student Transportation Services From the IU				1,110,123.35
522 Automotive Liability Insurance				138,559.00
580 Travel				1,146.02
Total Other Purchased Services				\$1,723,245.22
600 <u>Supplies</u>				
620 Energy				269,285.56
Total Supplies				\$269,285.56
700 <u>Property</u>				
762 Capitalized Equipment - Replacement				19,218.00
Total Property				\$19,218.00
800 <u>Other Objects</u>				
810 Dues and Fees				220.00
Total Other Objects				\$220.00
Total 2720 Vehicle Operation Services			\$6,750.20	\$4,182,968.79

LEA : 123463603 Hatboro-Horsham SD

Printed 11/30/2022 4:03:20 PM

General Fund (10)

2740 Vehicle Servicing and Maintenance Services	<u>Elementary</u>	<u>Secondary</u>	<u>Federal</u>	<u>Total</u>
100 <u>Personnel Services – Salaries</u>				
100 Personnel Services – Salaries				265,661.54
Total Personnel Services – Salaries				\$265,661.54
200 <u>Personnel Services – Employee Benefits</u>				
220 Social Security Contributions				20,224.76
230 PSERS Retirement Contributions				92,393.81
270 Group Insurance – Self-Insurance				33,090.00
Total Personnel Services – Employee Benefits				\$145,708.57
400 <u>Purchased Property Services</u>				
430 Repairs and Maintenance Services				33,921.84
Total Purchased Property Services				\$33,921.84
600 <u>Supplies</u>				
610 General Supplies				150,949.38
Total Supplies				\$150,949.38
Total 2740 Vehicle Servicing and Maintenance Services				\$596,241.33

LEA : 123463603 Hatboro-Horsham SD

Printed 11/30/2022 4:03:20 PM

General Fund (10)

2750 Nonpublic Transportation	<u>Elementary</u>	<u>Secondary</u>	<u>Federal</u>	<u>Total</u>
100 <u>Personnel Services – Salaries</u>				
100 Personnel Services – Salaries				280,093.60
Total Personnel Services – Salaries				\$280,093.60
200 <u>Personnel Services – Employee Benefits</u>				
220 Social Security Contributions				22,265.09
230 PSERS Retirement Contributions				90,041.32
270 Group Insurance – Self-Insurance				40,845.97
Total Personnel Services – Employee Benefits				\$153,152.38
500 <u>Other Purchased Services</u>				
513 Contracted Carriers				25,269.00
Total Other Purchased Services				\$25,269.00
Total 2750 Nonpublic Transportation				\$458,514.98

LEA : 123463603 Hatboro-Horsham SD

Printed 11/30/2022 4:03:20 PM

General Fund (10)

2790 Other Student Transportation Services	<u>Elementary</u>	<u>Secondary</u>	<u>Federal</u>	<u>Total</u>
100 <u>Personnel Services – Salaries</u>				
100 Personnel Services – Salaries				108,600.06
Total Personnel Services – Salaries				\$108,600.06
200 <u>Personnel Services – Employee Benefits</u>				
220 Social Security Contributions				7,651.34
230 PSERS Retirement Contributions				38,021.61
270 Group Insurance – Self-Insurance				32,899.52
Total Personnel Services – Employee Benefits				\$78,572.47
400 <u>Purchased Property Services</u>				
410 Cleaning Services				1,367.43
Total Purchased Property Services				\$1,367.43
500 <u>Other Purchased Services</u>				
519 Student Transportation Services From Other Sources				2,250.00
Total Other Purchased Services				\$2,250.00
Total 2790 Other Student Transportation Services				\$190,789.96

LEA : 123463603 Hatboro-Horsham SD

Printed 11/30/2022 4:03:20 PM

General Fund (10)					
2800 Support Services – Central		Elementary	Secondary	Federal	Total
100 Personnel Services – Salaries					
100 Personnel Services – Salaries				63,187.69	1,664,902.66
Total Personnel Services – Salaries				\$63,187.69	\$1,664,902.66
200 Personnel Services – Employee Benefits					
220 Social Security Contributions				4,798.00	119,950.28
230 PSERS Retirement Contributions				9,468.63	547,676.43
270 Group Insurance – Self-Insurance					271,626.22
Total Personnel Services – Employee Benefits				\$14,266.63	\$939,252.93
300 Purchased Professional and Technical Services					
329 Professional Educational Services – Other					1,760.00
330 Other Professional Services				450.00	6,598.00
340 Technical Services				4,800.00	395,418.50
360 Employee Training and Development Services					31,839.82
Total Purchased Professional and Technical Services				\$5,250.00	\$435,616.32
400 Purchased Property Services					
430 Repairs and Maintenance Services					626,038.70
440 Rentals					122,528.00
Total Purchased Property Services					\$748,566.70
500 Other Purchased Services					
520 Insurance – General					17,648.00
530 Communications				24,750.00	154,990.21
549 Other Advertising/Public Relations					7,624.94
550 Printing and Binding					3,276.91
580 Travel					23,079.82
Total Other Purchased Services				\$24,750.00	\$206,619.88
600 Supplies					
610 General Supplies					40,662.33
640 Books and Periodicals					788.09
650 Supplies & Fees – Technology Related					95,470.82
Total Supplies					\$136,921.24
700 Property					
762 Capitalized Equipment - Replacement				472,804.00	472,804.00
Total Property				\$472,804.00	\$472,804.00
800 Other Objects					
810 Dues and Fees					3,092.06
Total Other Objects					\$3,092.06
Total 2800 Support Services – Central				\$580,258.32	\$4,607,775.79

LEA : 123463603 Hatboro-Horsham SD

Printed 11/30/2022 4:03:20 PM

General Fund (10)

2810 Planning, Research, Development and Evaluation Services	<u>Elementary</u>	<u>Secondary</u>	<u>Federal</u>	<u>Total</u>
100 <u>Personnel Services – Salaries</u>				
100 Personnel Services – Salaries				176,131.29
Total Personnel Services – Salaries				\$176,131.29
200 <u>Personnel Services – Employee Benefits</u>				
220 Social Security Contributions				13,768.65
230 PSERS Retirement Contributions				60,185.47
270 Group Insurance – Self-Insurance				2,500.00
Total Personnel Services – Employee Benefits				\$76,454.12
300 <u>Purchased Professional and Technical Services</u>				
340 Technical Services			4,800.00	253,792.63
Total Purchased Professional and Technical Services			\$4,800.00	\$253,792.63
400 <u>Purchased Property Services</u>				
430 Repairs and Maintenance Services				366,935.80
440 Rentals				122,528.00
Total Purchased Property Services				\$489,463.80
500 <u>Other Purchased Services</u>				
530 Communications			24,750.00	154,990.21
580 Travel				429.85
Total Other Purchased Services			\$24,750.00	\$155,420.06
600 <u>Supplies</u>				
610 General Supplies				22,624.22
650 Supplies & Fees – Technology Related				84,894.77
Total Supplies				\$107,518.99
700 <u>Property</u>				
762 Capitalized Equipment - Replacement			472,804.00	472,804.00
Total Property			\$472,804.00	\$472,804.00
800 <u>Other Objects</u>				
810 Dues and Fees				923.06
Total Other Objects				\$923.06
Total 2810 Planning, Research, Development and Evaluation Services			\$502,354.00	\$1,732,507.95

LEA : 123463603 Hatboro-Horsham SD

Printed 11/30/2022 4:03:20 PM

General Fund (10)				
2820 Information Services	<u>Elementary</u>	<u>Secondary</u>	<u>Federal</u>	<u>Total</u>
100 <u>Personnel Services – Salaries</u>				
100 Personnel Services – Salaries				112,597.52
Total Personnel Services – Salaries				\$112,597.52
200 <u>Personnel Services – Employee Benefits</u>				
220 Social Security Contributions				8,275.21
230 PSERS Retirement Contributions				39,341.42
270 Group Insurance – Self-Insurance				29,284.20
Total Personnel Services – Employee Benefits				\$76,900.83
300 <u>Purchased Professional and Technical Services</u>				
340 Technical Services				58,949.48
Total Purchased Professional and Technical Services				\$58,949.48
400 <u>Purchased Property Services</u>				
430 Repairs and Maintenance Services				825.49
Total Purchased Property Services				\$825.49
500 <u>Other Purchased Services</u>				
520 Insurance – General				17,648.00
550 Printing and Binding				3,276.91
Total Other Purchased Services				\$20,924.91
600 <u>Supplies</u>				
610 General Supplies				813.84
650 Supplies & Fees – Technology Related				10,576.05
Total Supplies				\$11,389.89
800 <u>Other Objects</u>				
810 Dues and Fees				45.00
Total Other Objects				\$45.00
Total 2820 Information Services				\$281,633.12

LEA : 123463603 Hatboro-Horsham SD

Printed 11/30/2022 4:03:20 PM

General Fund (10)

2823 Public Information Services	<u>Elementary</u>	<u>Secondary</u>	<u>Federal</u>	<u>Total</u>
100 <u>Personnel Services – Salaries</u>				
100 Personnel Services – Salaries				112,597.52
Total Personnel Services – Salaries				\$112,597.52
200 <u>Personnel Services – Employee Benefits</u>				
220 Social Security Contributions				8,275.21
230 PSERS Retirement Contributions				39,341.42
270 Group Insurance – Self-Insurance				29,284.20
Total Personnel Services – Employee Benefits				\$76,900.83
300 <u>Purchased Professional and Technical Services</u>				
340 Technical Services				58,949.48
Total Purchased Professional and Technical Services				\$58,949.48
400 <u>Purchased Property Services</u>				
430 Repairs and Maintenance Services				825.49
Total Purchased Property Services				\$825.49
500 <u>Other Purchased Services</u>				
550 Printing and Binding				3,276.91
Total Other Purchased Services				\$3,276.91
600 <u>Supplies</u>				
610 General Supplies				813.84
650 Supplies & Fees – Technology Related				10,576.05
Total Supplies				\$11,389.89
Total 2823 Public Information Services				\$263,940.12

LEA : 123463603 Hatboro-Horsham SD

Printed 11/30/2022 4:03:20 PM

General Fund (10)

2829 Other Information Services	<u>Elementary</u>	<u>Secondary</u>	<u>Federal</u>	<u>Total</u>
500 <u>Other Purchased Services</u>				
520 Insurance – General				17,648.00
Total Other Purchased Services				\$17,648.00
800 <u>Other Objects</u>				
810 Dues and Fees				45.00
Total Other Objects				\$45.00
Total 2829 Other Information Services				\$17,693.00

LEA : 123463603 Hatboro-Horsham SD

Printed 11/30/2022 4:03:20 PM

General Fund (10)				
2830 Staff Services				
	<u>Elementary</u>	<u>Secondary</u>	<u>Federal</u>	<u>Total</u>
100 <u>Personnel Services – Salaries</u>				
100 Personnel Services – Salaries			63,187.69	490,527.96
Total Personnel Services – Salaries			\$63,187.69	\$490,527.96
200 <u>Personnel Services – Employee Benefits</u>				
220 Social Security Contributions			4,798.00	35,743.13
230 PSERS Retirement Contributions			9,468.63	156,502.64
270 Group Insurance – Self-Insurance				69,068.72
Total Personnel Services – Employee Benefits			\$14,266.63	\$261,314.49
300 <u>Purchased Professional and Technical Services</u>				
329 Professional Educational Services – Other				1,760.00
330 Other Professional Services				6,148.00
340 Technical Services				22,133.26
360 Employee Training and Development Services				31,839.82
Total Purchased Professional and Technical Services				\$61,881.08
500 <u>Other Purchased Services</u>				
549 Other Advertising/Public Relations				7,624.94
580 Travel				22,649.97
Total Other Purchased Services				\$30,274.91
600 <u>Supplies</u>				
610 General Supplies				17,224.27
640 Books and Periodicals				788.09
Total Supplies				\$18,012.36
800 <u>Other Objects</u>				
810 Dues and Fees				2,124.00
Total Other Objects				\$2,124.00
Total 2830 Staff Services			\$77,454.32	\$864,134.80

LEA : 123463603 Hatboro-Horsham SD

Printed 11/30/2022 4:03:20 PM

General Fund (10)

2832 Recruitment and Placement Services

Elementary Secondary Federal Total

100 <u>Personnel Services – Salaries</u>				
100 Personnel Services – Salaries				171,846.67
Total Personnel Services – Salaries				\$171,846.67
200 <u>Personnel Services – Employee Benefits</u>				
220 Social Security Contributions				11,832.09
230 PSERS Retirement Contributions				55,904.08
270 Group Insurance – Self-Insurance				24,127.62
Total Personnel Services – Employee Benefits				\$91,863.79
300 <u>Purchased Professional and Technical Services</u>				
340 Technical Services				22,133.26
Total Purchased Professional and Technical Services				\$22,133.26
500 <u>Other Purchased Services</u>				
549 Other Advertising/Public Relations				7,624.94
580 Travel				433.87
Total Other Purchased Services				\$8,058.81
600 <u>Supplies</u>				
610 General Supplies				7,958.00
Total Supplies				\$7,958.00
800 <u>Other Objects</u>				
810 Dues and Fees				2,124.00
Total Other Objects				\$2,124.00
Total 2832 Recruitment and Placement Services				\$303,984.53

LEA : 123463603 Hatboro-Horsham SD

Printed 11/30/2022 4:03:20 PM

General Fund (10)

2833 Staff Accounting Services

Elementary Secondary Federal Total

100 <u>Personnel Services – Salaries</u>				
100 Personnel Services – Salaries				255,493.60
Total Personnel Services – Salaries				\$255,493.60
200 <u>Personnel Services – Employee Benefits</u>				
220 Social Security Contributions				19,113.04
230 PSERS Retirement Contributions				81,661.31
270 Group Insurance – Self-Insurance				42,406.82
Total Personnel Services – Employee Benefits				\$143,181.17
300 <u>Purchased Professional and Technical Services</u>				
329 Professional Educational Services – Other				1,760.00
Total Purchased Professional and Technical Services				\$1,760.00
Total 2833 Staff Accounting Services				\$400,434.77

LEA : 123463603 Hatboro-Horsham SD

Printed 11/30/2022 4:03:20 PM

General Fund (10)

2834 Staff Development Services – Non-Instructional, Certified Staff Only	<u>Elementary</u>	<u>Secondary</u>	<u>Federal</u>	<u>Total</u>
300 <u>Purchased Professional and Technical Services</u>				
360 Employee Training and Development Services				11,474.71
Total Purchased Professional and Technical Services				\$11,474.71
500 <u>Other Purchased Services</u>				
580 Travel				7,208.43
Total Other Purchased Services				\$7,208.43
600 <u>Supplies</u>				
640 Books and Periodicals				788.09
Total Supplies				\$788.09
Total 2834 Staff Development Services – Non-Instructional, Certified Staff Only				\$19,471.23

LEA : 123463603 Hatboro-Horsham SD

Printed 11/30/2022 4:03:20 PM

General Fund (10)

2835 Health Services

	<u>Elementary</u>	<u>Secondary</u>	<u>Federal</u>	<u>Total</u>
100 <u>Personnel Services – Salaries</u>				
100 Personnel Services – Salaries			63,187.69	63,187.69
Total Personnel Services – Salaries			\$63,187.69	\$63,187.69
200 <u>Personnel Services – Employee Benefits</u>				
220 Social Security Contributions			4,798.00	4,798.00
230 PSERS Retirement Contributions			9,468.63	18,937.25
270 Group Insurance – Self-Insurance				2,534.28
Total Personnel Services – Employee Benefits			\$14,266.63	\$26,269.53
Total 2835 Health Services			\$77,454.32	\$89,457.22

LEA : 123463603 Hatboro-Horsham SD

Printed 11/30/2022 4:03:20 PM

General Fund (10)

2836 Staff Development Services – Non-Instructional, Non-Certified Staff Only	<u>Elementary</u>	<u>Secondary</u>	<u>Federal</u>	<u>Total</u>
300 <u>Purchased Professional and Technical Services</u>				
360 Employee Training and Development Services				20,365.11
Total Purchased Professional and Technical Services				\$20,365.11
500 <u>Other Purchased Services</u>				
580 Travel				15,007.67
Total Other Purchased Services				\$15,007.67
Total 2836 Staff Development Services – Non-Instructional, Non-Certified Staff Only				\$35,372.78

LEA : 123463603 Hatboro-Horsham SD

Printed 11/30/2022 4:03:20 PM

General Fund (10)

2839 Other Staff Services

<u>Elementary</u>	<u>Secondary</u>	<u>Federal</u>	<u>Total</u>
-------------------	------------------	----------------	--------------

300 Purchased Professional and Technical Services

330 Other Professional Services			6,148.00
---------------------------------	--	--	----------

Total Purchased Professional and Technical Services			\$6,148.00
--	--	--	-------------------

600 Supplies

610 General Supplies			9,266.27
----------------------	--	--	----------

Total Supplies			\$9,266.27
-----------------------	--	--	-------------------

Total 2839 Other Staff Services			\$15,414.27
--	--	--	--------------------

LEA : 123463603 Hatboro-Horsham SD

Printed 11/30/2022 4:03:20 PM

General Fund (10)

2840 Data Processing Services	<u>Elementary</u>	<u>Secondary</u>	<u>Federal</u>	<u>Total</u>
100 <u>Personnel Services – Salaries</u>				
100 Personnel Services – Salaries				885,645.89
Total Personnel Services – Salaries				\$885,645.89
200 <u>Personnel Services – Employee Benefits</u>				
220 Social Security Contributions				62,163.29
230 PSERS Retirement Contributions				291,646.90
270 Group Insurance – Self-Insurance				170,773.30
Total Personnel Services – Employee Benefits				\$524,583.49
300 <u>Purchased Professional and Technical Services</u>				
340 Technical Services				60,543.13
Total Purchased Professional and Technical Services				\$60,543.13
400 <u>Purchased Property Services</u>				
430 Repairs and Maintenance Services				258,277.41
Total Purchased Property Services				\$258,277.41
Total 2840 Data Processing Services				\$1,729,049.92

LEA : 123463603 Hatboro-Horsham SD

Printed 11/30/2022 4:03:20 PM

General Fund (10)

2890 Other Support Services Central	<u>Elementary</u>	<u>Secondary</u>	<u>Federal</u>	<u>Total</u>
300 <u>Purchased Professional and Technical Services</u>				
330 Other Professional Services			450.00	450.00
Total Purchased Professional and Technical Services			\$450.00	\$450.00
Total 2890 Other Support Services Central			\$450.00	\$450.00

LEA : 123463603 Hatboro-Horsham SD

Printed 11/30/2022 4:03:20 PM

General Fund (10)

2900 Other Support Services	<u>Elementary</u>	<u>Secondary</u>	<u>Federal</u>	<u>Total</u>
500 <u>Other Purchased Services</u>				
595 IU Payments By Withholding				72,825.73
Total Other Purchased Services				\$72,825.73
Total 2900 Other Support Services				\$72,825.73

Total

72,825.73

\$72,825.73

\$72,825.73

LEA : 123463603 Hatboro-Horsham SD

Printed 11/30/2022 4:03:26 PM

General Fund (10)

3000 Operation of Non-Instructional Services		<u>Total</u>
100 <u>Personnel Services – Salaries</u>		
100 Personnel Services – Salaries	953,812.52	
Total Personnel Services – Salaries	\$953,812.52	
200 <u>Personnel Services – Employee Benefits</u>		
220 Social Security Contributions	72,605.46	
230 PSERS Retirement Contributions	330,584.88	
270 Group Insurance – Self-Insurance	87,154.74	
Total Personnel Services – Employee Benefits	\$490,345.08	
300 <u>Purchased Professional and Technical Services</u>		
323 Professional Educational Services – Other Educational Agencies	300.00	
330 Other Professional Services	97,937.00	
Total Purchased Professional and Technical Services	\$98,237.00	
500 <u>Other Purchased Services</u>		
520 Insurance – General	2,433.00	
550 Printing and Binding	800.00	
580 Travel	1,163.90	
591 Services Purchased Locally	60,000.00	
Total Other Purchased Services	\$64,396.90	
600 <u>Supplies</u>		
610 General Supplies	107,777.95	
630 Food	2,230.75	
Total Supplies	\$110,008.70	
700 <u>Property</u>		
762 Capitalized Equipment - Replacement	14,859.63	
Total Property	\$14,859.63	
800 <u>Other Objects</u>		
810 Dues and Fees	42,942.48	
890 Miscellaneous Expenditures	51,825.63	
Total Other Objects	\$94,768.11	
Total 3000 Operation of Non-Instructional Services	\$1,826,427.94	

LEA : 123463603 Hatboro-Horsham SD

Printed 11/30/2022 4:03:26 PM

General Fund (10)				
3200 Student Activities	<u>Elementary</u>	<u>Secondary</u>	<u>Federal</u>	<u>Total</u>
100 <u>Personnel Services – Salaries</u>				
100 Personnel Services – Salaries				923,310.40
Total Personnel Services – Salaries				\$923,310.40
200 <u>Personnel Services – Employee Benefits</u>				
220 Social Security Contributions				70,059.55
230 PSERS Retirement Contributions				318,469.66
270 Group Insurance – Self-Insurance				81,307.78
Total Personnel Services – Employee Benefits				\$469,836.99
300 <u>Purchased Professional and Technical Services</u>				
323 Professional Educational Services – Other Educational Agencies				300.00
330 Other Professional Services				97,937.00
Total Purchased Professional and Technical Services				\$98,237.00
500 <u>Other Purchased Services</u>				
520 Insurance – General				2,433.00
550 Printing and Binding				800.00
580 Travel				1,163.90
591 Services Purchased Locally				60,000.00
Total Other Purchased Services				\$64,396.90
600 <u>Supplies</u>				
610 General Supplies				107,777.95
630 Food				322.80
Total Supplies				\$108,100.75
700 <u>Property</u>				
762 Capitalized Equipment - Replacement				14,859.63
Total Property				\$14,859.63
800 <u>Other Objects</u>				
810 Dues and Fees				42,942.48
890 Miscellaneous Expenditures				51,825.63
Total Other Objects				\$94,768.11
Total 3200 Student Activities				\$1,773,509.78

LEA : 123463603 Hatboro-Horsham SD

Printed 11/30/2022 4:03:26 PM

General Fund (10)

3300 Community Services

	<u>Elementary</u>	<u>Secondary</u>	<u>Federal</u>	<u>Total</u>
100 <u>Personnel Services – Salaries</u>				
100 Personnel Services – Salaries				30,502.12
Total Personnel Services – Salaries				\$30,502.12
200 <u>Personnel Services – Employee Benefits</u>				
220 Social Security Contributions				2,545.91
230 PSERS Retirement Contributions				12,115.22
270 Group Insurance – Self-Insurance				5,846.96
Total Personnel Services – Employee Benefits				\$20,508.09
600 <u>Supplies</u>				
630 Food			1,907.95	1,907.95
Total Supplies			\$1,907.95	\$1,907.95
Total 3300 Community Services			\$1,907.95	\$52,918.16

LEA : 123463603 Hatboro-Horsham SD

Printed 11/30/2022 4:03:37 PM

General Fund (10)

4000 Facilities Acquisition, Construction and Improvement Services

Total

700 Property

752 Capital Equipment – Original and Additional

18,368.44

Total Property

\$18,368.44

Total 4000 Facilities Acquisition, Construction and Improvement Services

\$18,368.44

LEA : 123463603 Hatboro-Horsham SD

Printed 11/30/2022 4:03:37 PM

General Fund (10)

4200 Existing Site Improvement Services	<u>Elementary</u>	<u>Secondary</u>	<u>Federal</u>	<u>Total</u>
700 <u>Property</u>				
752 Capital Equipment – Original and Additional			18,368.44	18,368.44
Total Property			\$18,368.44	\$18,368.44
Total 4200 Existing Site Improvement Services			\$18,368.44	\$18,368.44

LEA : 123463603 Hatboro-Horsham SD

Printed 11/30/2022 4:03:57 PM

General Fund (10)

5000 Other Expenditures and Financing Uses

Total

800	<u>Other Objects</u>	
830	Interest	1,905,184.01
880	Refunds of Prior Years' Receipts	150,716.36
Total Other Objects		\$2,055,900.37
900	<u>Other Uses of Funds</u>	
910	Redemption of Principal	3,375,433.00
932	Capital Reserve Fund Transfers Applicable To Fund 32	2,560,829.20
939	Other Fund Transfers	2,438,730.93
Total Other Uses of Funds		\$8,374,993.13
Total 5000 Other Expenditures and Financing Uses		\$10,430,893.50

LEA : 123463603 Hatboro-Horsham SD

Printed 11/30/2022 4:03:57 PM

General Fund (10)

5100 Debt Service / Other Expenditures and Financing Uses	<u>Elementary</u>	<u>Secondary</u>	<u>Federal</u>	<u>Total</u>
800 <u>Other Objects</u>				
830 Interest				1,905,184.01
880 Refunds of Prior Years' Receipts				150,716.36
Total Other Objects				\$2,055,900.37
900 <u>Other Uses of Funds</u>				
910 Redemption of Principal				3,375,433.00
Total Other Uses of Funds				\$3,375,433.00
Total 5100 Debt Service / Other Expenditures and Financing Uses				\$5,431,333.37

LEA : 123463603 Hatboro-Horsham SD

Printed 11/30/2022 4:03:57 PM

General Fund (10)

5110 Debt Service	<u>Elementary</u>	<u>Secondary</u>	<u>Federal</u>	<u>Total</u>
800 <u>Other Objects</u>				
830 Interest				1,886,074.01
Total Other Objects				\$1,886,074.01
900 <u>Other Uses of Funds</u>				
910 Redemption of Principal				2,170,000.00
Total Other Uses of Funds				\$2,170,000.00
Total 5110 Debt Service				\$4,056,074.01

LEA : 123463603 Hatboro-Horsham SD

Printed 11/30/2022 4:03:57 PM

General Fund (10)

5130 Refund of Prior Year Revenues / Receipts	<u>Elementary</u>	<u>Secondary</u>	<u>Federal</u>	<u>Total</u>
800 <u>Other Objects</u>				
880 Refunds of Prior Years' Receipts				150,716.36
Total Other Objects				\$150,716.36
Total 5130 Refund of Prior Year Revenues / Receipts				\$150,716.36

LEA : 123463603 Hatboro-Horsham SD

Printed 11/30/2022 4:03:57 PM

General Fund (10)

5140 Leases	<u>Elementary</u>	<u>Secondary</u>	<u>Federal</u>	<u>Total</u>
800 <u>Other Objects</u>				
830 Interest				19,110.00
Total Other Objects				\$19,110.00
900 <u>Other Uses of Funds</u>				
910 Redemption of Principal				1,205,433.00
Total Other Uses of Funds				\$1,205,433.00
Total 5140 Leases				\$1,224,543.00

LEA : 123463603 Hatboro-Horsham SD

Printed 11/30/2022 4:03:57 PM

General Fund (10)

5200 Interfund Transfers – Out	<u>Elementary</u>	<u>Secondary</u>	<u>Federal</u>	<u>Total</u>
900 <u>Other Uses of Funds</u>				
932 Capital Reserve Fund Transfers Applicable To Fund 32				2,560,829.20
939 Other Fund Transfers				2,438,730.93
Total Other Uses of Funds				\$4,999,560.13
Total 5200 Interfund Transfers – Out				\$4,999,560.13

LEA : 123463603 Hatboro-Horsham SD

Printed 11/30/2022 4:03:57 PM

General Fund (10)

5230 Capital Projects Fund Transfers	<u>Elementary</u>	<u>Secondary</u>	<u>Federal</u>	<u>Total</u>
900 <u>Other Uses of Funds</u>				
932 Capital Reserve Fund Transfers Applicable To Fund 32				2,560,829.20
Total Other Uses of Funds				\$2,560,829.20
Total 5230 Capital Projects Fund Transfers				\$2,560,829.20

LEA : 123463603 Hatboro-Horsham SD

Printed 11/30/2022 4:03:57 PM

General Fund (10)

5240 Debt Service Fund Transfers	<u>Elementary</u>	<u>Secondary</u>	<u>Federal</u>	<u>Total</u>
900 <u>Other Uses of Funds</u>				
939 Other Fund Transfers				1,000,000.00
Total Other Uses of Funds				\$1,000,000.00
Total 5240 Debt Service Fund Transfers				\$1,000,000.00

LEA : 123463603 Hatboro-Horsham SD

Printed 11/30/2022 4:03:57 PM

General Fund (10)

5260 Internal Service Fund Transfers	<u>Elementary</u>	<u>Secondary</u>	<u>Federal</u>	<u>Total</u>
900 <u>Other Uses of Funds</u>				
939 Other Fund Transfers				1,438,730.93
Total Other Uses of Funds				\$1,438,730.93
Total 5260 Internal Service Fund Transfers				\$1,438,730.93

LEA : 123463603 Hatboro-Horsham SD

Printed 11/30/2022 4:03:49 PM

Capital Reserve Fund - § 1431 (32)

4000 Facilities Acquisition, Construction and Improvement Services

Total

700 <u>Property</u>	
762 Capitalized Equipment - Replacement	4,794,269.05
Total Property	\$4,794,269.05
Total 4000 Facilities Acquisition, Construction and Improvement Services	\$4,794,269.05

LEA : 123463603 Hatboro-Horsham SD

Printed 11/30/2022 4:03:49 PM

Capital Reserve Fund - § 1431 (32)

4600 Existing Building Improvement Services	<u>Elementary</u>	<u>Secondary</u>	<u>Federal</u>	<u>Total</u>
700 <u>Property</u>				
762 Capitalized Equipment - Replacement				4,794,269.05
Total Property				\$4,794,269.05
Total 4600 Existing Building Improvement Services				\$4,794,269.05

LEA : 123463603 Hatboro-Horsham SD

Printed 11/30/2022 4:03:54 PM

Other Capital Projects Fund (39)

4000 Facilities Acquisition, Construction and Improvement Services

Total

700 <u>Property</u>	
790 Other Property	3,001,848.47
Total Property	\$3,001,848.47
Total 4000 Facilities Acquisition, Construction and Improvement Services	\$3,001,848.47

LEA : 123463603 Hatboro-Horsham SD

Printed 11/30/2022 4:03:54 PM

Other Capital Projects Fund (39)

4100 Site Acquisition Services – Original and Additional

Elementary

Secondary

Federal

Total

700 Property

790 Other Property

3,001,848.47

Total Property

\$3,001,848.47

Total 4100 Site Acquisition Services – Original and Additional

\$3,001,848.47

	<u>General Fund(10)</u>	<u>Student Sponsored Activity Fund(21)</u>	<u>Public Purpose Trust(27)</u>	<u>Other Compt Approved (28)</u>	<u>Athletic / Activity(29)</u>
1000 <u>Instruction</u>					
1100 Regular Programs - Elementary / Secondary	44,337,961.92				
1200 Special Programs - Elementary / Secondary	19,350,091.58				
1300 Vocational Education	2,698,809.22				
1400 Other Instructional Programs - Elementary / Secondary	57,601.41				
1500 Nonpublic School Programs	5,056.45				
Total Instruction	\$66,449,520.58				
2000 <u>Support Services</u>					
2100 Support Services - Students	4,659,347.76				
2200 Support Services - Instructional Staff	3,794,672.57				
2300 Support Services - Administration	5,883,597.84				
2400 Support Services - Pupil Health	1,460,219.61				
2500 Support Services - Business	1,487,978.85				
2600 Operation and Maintenance of Plant Services	8,313,508.23				
2700 Student Transportation Services	5,605,359.58				
2800 Support Services - Central	4,607,775.79				
2900 Other Support Services	72,825.73				
Total Support Services	\$35,885,285.96				
3000 <u>Operation of Non-Instructional Services</u>					
3200 Student Activities	1,773,509.78				
3300 Community Services	52,918.16				
Total Operation of Non-Instructional Services	\$1,826,427.94				
4000 <u>Facilities Acquisition, Construction and Improvement Services</u>					
4100 Site Acquisition Services - Original and Additional					
4200 Existing Site Improvement Services	18,368.44				
4600 Existing Building Improvement Services					
Total Facilities Acquisition, Construction and Improvement Services	\$18,368.44				
5000 <u>Other Expenditures and Financing Uses</u>					
5100 Debt Service / Other Expenditures and Financing Uses	5,431,333.37				
5200 Interfund Transfers - Out	4,999,560.13				
Total Other Expenditures and Financing Uses	\$10,430,893.50				
TOTAL ACTUAL EXPENDITURES & OTHER FINANCING USES	\$114,610,496.42				

LEA : 123463603 Hatboro-Horsham SD

Printed 11/30/2022 4:04:02 PM

	<u>Capital Reserve (690.1850)(31)</u>	<u>Capital Reserve (1431)(32)</u>	<u>Other Capital Projects Fund(39)</u>	<u>Debt Service(40)</u>	<u>Permanent(90)</u>
1000 <u>Instruction</u>					
1100 Regular Programs - Elementary / Secondary					
1200 Special Programs - Elementary / Secondary					
1300 Vocational Education					
1400 Other Instructional Programs - Elementary / Secondary					
1500 Nonpublic School Programs					
Total Instruction					
2000 <u>Support Services</u>					
2100 Support Services - Students					
2200 Support Services - Instructional Staff					
2300 Support Services - Administration					
2400 Support Services - Pupil Health					
2500 Support Services - Business					
2600 Operation and Maintenance of Plant Services					
2700 Student Transportation Services					
2800 Support Services - Central					
2900 Other Support Services					
Total Support Services					
3000 <u>Operation of Non-Instructional Services</u>					
3200 Student Activities					
3300 Community Services					
Total Operation of Non-Instructional Services					
4000 <u>Facilities Acquisition, Construction and Improvement Services</u>					
4100 Site Acquisition Services - Original and Additional			3,001,848.47		
4200 Existing Site Improvement Services					
4600 Existing Building Improvement Services		4,794,269.05			
Total Facilities Acquisition, Construction and Improvement Services		\$4,794,269.05	\$3,001,848.47		
5000 <u>Other Expenditures and Financing Uses</u>					
5100 Debt Service / Other Expenditures and Financing Uses					
5200 Interfund Transfers - Out					
Total Other Expenditures and Financing Uses					
TOTAL ACTUAL EXPENDITURES & OTHER FINANCING USES		\$4,794,269.05	\$3,001,848.47		

	<u>Total</u>
1000 <u>Instruction</u>	
1100 Regular Programs - Elementary / Secondary	44,337,961.92
1200 Special Programs - Elementary / Secondary	19,350,091.58
1300 Vocational Education	2,698,809.22
1400 Other Instructional Programs - Elementary / Secondary	57,601.41
1500 Nonpublic School Programs	5,056.45
Total Instruction	\$66,449,520.58
2000 <u>Support Services</u>	
2100 Support Services - Students	4,659,347.76
2200 Support Services - Instructional Staff	3,794,672.57
2300 Support Services - Administration	5,883,597.84
2400 Support Services - Pupil Health	1,460,219.61
2500 Support Services - Business	1,487,978.85
2600 Operation and Maintenance of Plant Services	8,313,508.23
2700 Student Transportation Services	5,605,359.58
2800 Support Services - Central	4,607,775.79
2900 Other Support Services	72,825.73
Total Support Services	\$35,885,285.96
3000 <u>Operation of Non-Instructional Services</u>	
3200 Student Activities	1,773,509.78
3300 Community Services	52,918.16
Total Operation of Non-Instructional Services	\$1,826,427.94
4000 <u>Facilities Acquisition, Construction and Improvement Services</u>	
4100 Site Acquisition Services - Original and Additional	3,001,848.47
4200 Existing Site Improvement Services	18,368.44
4600 Existing Building Improvement Services	4,794,269.05
Total Facilities Acquisition, Construction and Improvement Services	\$7,814,485.96
5000 <u>Other Expenditures and Financing Uses</u>	
5100 Debt Service / Other Expenditures and Financing Uses	5,431,333.37
5200 Interfund Transfers - Out	4,999,560.13
Total Other Expenditures and Financing Uses	\$10,430,893.50
TOTAL ACTUAL EXPENDITURES & OTHER FINANCING USES	\$122,406,613.94

LEA : 123463603 Hatboro-Horsham SD

Printed 11/30/2022 4:04:17 PM

PSERS Salary Data (Salary Data should relate to the General Fund only)

Amount	Description	Amount
	Total Salary Base for salaries subject to PSERS withholding	49,745,728.05
	Total Federally Funded salaries subject to PSERS withholding	1,296,975.00

Title I Expenditure Data

Amount	Description	Amount
	Expenditures Funded with Current Title I Funds	268,044.89
	Expenditures Funded with Carry over Title I Funds	243,661.20
Total	Title I Expenditure Data	\$511,706.09

Title IV Revenue Data

Amount	Description	Amount
	Revenue from Title IV-A-1: Student Support and Academic Enrichment Grants	11,196.61
	Revenue from Title IV-B: 21st Century Community Learning Centers	

Title V Revenue Data

Amount	Description	Amount
	Revenue from Title V-B-2: Rural and Low-Income School Programs	
	Revenue from Title V-B-1: Small Rural School Achievement (Directly from the Federal Govt)	

1 . <u>Current Special Education Expenditures within Function 1000.\r\nSee list of exclusions in the note below.</u>	18,034,759.32
2 . <u>Current Special Education Expenditures within Function 2000.\r\nSee list of exclusions in the note below.</u>	6,000,095.33
3 . <u>Current Special Education Expenditures within Sub-Function 2100.\r\nThis data should also be included in line 2 above.\r\nSee list of exclusions in the note below.</u>	1,010,021.22
4 . <u>Current Special Education Expenditures within Sub-Function 2200.\r\nThis data should also be included in line 2 above.\r\nSee list of exclusions in the note below.</u>	1,344,071.11
5 . <u>Current Special Education Expenditures within Sub-Function 2700.\r\nThis data should also be included in line 2 above.\r\nSee list of exclusions in the note below.</u>	747,079.60
6 . <u>Current Special Education Expenditures within Sub-Function 3100.\r\nSee list of exclusions in the note below.</u>	
7 . <u>Current Special Education Expenditures within Sub-Function 3200.\r\nSee list of exclusions in the note below.</u>	170,227.14

Note: The Current Special Education Expenditure amounts for each line should be calculated as follows:

- * Include the total expenditures for special education costs from all funds for the function/sub-function requested
- * Exclude data from sub-functions: 1243,1450,1500,1600,1807,2280,2450,2750,2990
- * Exclude data from objects: 322,511,512,516,561,562,564,566,592,593,594,595,596,597,700,830,899

Benefits for Staff Relative to Collective Bargaining Agreements

	OBJECT	COVERED	NOT COVERED	TOTAL
10 General Fund				
	211 Medical Insurance	54,963.00		54,963.00
	212 Dental Insurance			
	215 Eye Care Insurance			
	216 Prescription Insurance			
	271 Self-Insurance Medical Benefits	3,040,553.00	1,694,537.00	4,735,090.00
	272 Self-Insurance Dental Benefits	317,707.00	177,062.00	494,769.00
	275 Self-Insurance Eye Care Benefits			
	276 Self-Insurance Prescription Benefits	2,083,434.00	1,161,123.00	3,244,557.00
	FUND TOTAL	\$5,496,657.00	\$3,032,722.00	\$8,529,379.00
50 Enterprise Fund				
	211 Medical Insurance			
	212 Dental Insurance			
	215 Eye Care Insurance			
	216 Prescription Insurance			
	271 Self-Insurance Medical Benefits		157,313.00	157,313.00
	272 Self-Insurance Dental Benefits		20,057.00	20,057.00
	275 Self-Insurance Eye Care Benefits			
	276 Self-Insurance Prescription Benefits		107,793.00	107,793.00
	FUND TOTAL		\$285,163.00	\$285,163.00
60 Internal Service Fund	No Self Insurance data to report			
	211 Medical Insurance			
	212 Dental Insurance			
	215 Eye Care Insurance			
	216 Prescription Insurance			
	271 Self-Insurance Medical Benefits			
	272 Self-Insurance Dental Benefits			
	275 Self-Insurance Eye Care Benefits			
	276 Self-Insurance Prescription Benefits			
	FUND TOTAL			
Total of All Funds		\$5,496,657.00	\$3,317,885.00	\$8,814,542.00

LEA : 123463603 Hatboro-Horsham SD

Printed 11/30/2022 4:04:26 PM

Function	Special Education (Prior Year)	Nonspecial Education (Prior Year)	Total (Prior Year)	Special Education (Current Year)	Nonspecial Education (Current Year)	Total (Current Year)
2120 Guidance Services	484,452.73	2,108,511.41	2,592,964.14	550,101.00	2,308,798.30	2,858,899.30
2140 Psychological Services	229,820.77	1,000,262.11	1,230,082.88	247,007.50	1,036,701.43	1,283,708.93
2150 Speech Pathology and Audiology Services						
2160 Social Work Services	47,082.42	204,919.52	252,001.94	41,900.43	171,857.94	213,758.37
2260 Instruction and Curriculum Development Services	849,862.63	699,452.75	1,549,315.38	875,917.00	1,361,445.06	2,237,362.06
2350 Legal and Accounting Services	108,028.26	167,699.73	275,727.99	141,574.77	229,310.54	370,885.31
2420 Medical Services	376,262.45	15,068.75	391,331.20	429,176.73	13,039.80	442,216.53
2440 Nursing Services	181,602.94	790,400.93	972,003.87	192,676.64	808,672.42	1,001,349.06
2700 Student Transportation Services	1,429,122.58	3,046,026.28	4,475,148.86	2,004,568.02	3,600,791.56	5,605,359.58
Total	\$3,706,234.78	\$8,032,341.48	\$11,738,576.26	\$4,482,922.09	\$9,530,617.05	\$14,013,539.14

LEA : 123463603 Hatboro-Horsham SD

Printed 11/30/2022 4:04:30 PM

(PRINCIPAL AMOUNTS ONLY)

GOVERNMENTAL FUNDS/ ACTIVITIES

	Short-Term Borrowing	General Obligation Bonds/Notes	Authority Building Obligations	OLTD, Ext Term Fin, Leases	Other Post- Employment Benefits (OPEB)	Compensated Absences	Net Pension Liability	Total
1. Debt at Beginning of Fiscal Year		63,130,000.00		5,242,062.00	12,277,698.00	2,407,512.50	165,976,000.00	249,033,272.50
2. Additional Debt Incurred During Year		9,995,000.00		922,701.00	546,252.00	166,675.00		11,630,628.00
3. Retirements and Repayments		2,170,000.00		1,205,433.00		391,875.00	29,887,000.00	33,654,308.00
4. Debt at End of Fiscal Year		70,955,000.00		4,959,330.00	12,823,950.00	2,182,312.50	136,089,000.00	227,009,592.50
5. Accreted Interest at End Of Fiscal Year								
6. Total Debt and Accreted Interest		70,955,000.00		4,959,330.00	12,823,950.00	2,182,312.50	136,089,000.00	227,009,592.50
7. Current Portion P&I - Due within 1 year		6,309,475.94		1,159,088.00				7,468,563.94
8. Interest Paid during current fiscal year		1,886,074.00		19,110.00				1,905,184.00

(PRINCIPAL AMOUNTS ONLY)

PROPRIETARY FUNDS

	Short-Term Borrowing	General Obligation Bonds/Notes	Authority Building Obligations	OLTD, Ext Term Fin, Leases	Other Post- Employment Benefits (OPEB)	Compensated Absences	Net Pension Liability	Total
1. Debt at Beginning of Fiscal Year					349,200.00	104,800.00	5,425,000.00	5,879,000.00
2. Additional Debt Incurred During Year					37,600.00	11,300.00		48,900.00
3. Retirements and Repayments						32,800.00	977,000.00	1,009,800.00
4. Debt at End of Fiscal Year					386,800.00	83,300.00	4,448,000.00	4,918,100.00
5. Accreted Interest at End Of Fiscal Year								
6. Total Debt and Accreted Interest					386,800.00	83,300.00	4,448,000.00	4,918,100.00
7. Current Portion P&I - Due within 1 year								
8. Interest Paid during current fiscal year								

LEA : 123463603 Hatboro-Horsham SD

Total Principal and Interest Payments Made by Your School - All Funds

Function	Fund		Principal (910)	Principal (920)	Interest (830)	Total (Principal +Interest)	Misc Other Uses (990)
5110	10	General Fund	2,170,000.00		1,886,074.01	4,056,074.01	
5110	20	Special Revenue Funds					
5110	30	Capital Projects Funds					
5110	40	Debt Service Fund					
5110	90	Permanent Fund					
5120	10	General Fund					
5120	20	Special Revenue Funds					
5120	30	Capital Projects Funds					
5120	40	Debt Service Fund					
5140	10	General Fund	1,205,433.00		19,110.00	1,224,543.00	
5140	20	Special Revenue Funds					
5140	30	Capital Projects Funds					
5140	40	Debt Service Fund					
5140	90	Permanent Fund					
Total Debt Payments - Governmental Funds			\$3,375,433.00		\$1,905,184.01	\$5,280,617.01	

Function	Fund		Principal (910)	Principal (920)	Interest (830)	Total (Principal +Interest)
5110	50	Enterprise Fund				
5110	60	Internal Service Fund				
5120	50	Enterprise Fund				
5120	60	Internal Service Fund				
5140	50	Enterprise Fund				
5140	60	Internal Service Fund				
Total Debt Payments - Proprietary Funds						

LEA : 123463603 Hatboro-Horsham SD

<u>Debt Details</u> <u>Governmental Funds/ Activities</u>		Principal Amounts Only				Current Portion Due Within One Year (Principal and Interest)	Interest Paid During Fiscal Year
Debt Category	Debt Issue Date (MM/YYYY)	Debt at Beginning of Fiscal Year	Additions	Reductions / Repayments	Debt at End of Fiscal Year		
General Obligation Bonds/Notes – CIB	10/2022	9,940,000.00		35,000.00	9,905,000.00	904,856.26	268,031.26
General Obligation Bonds/Notes – CIB	11/2021		9,995,000.00		9,995,000.00	376,306.25	108,299.48
General Obligation Bonds/Notes – CIB	06/2020	20,505,000.00		160,000.00	20,345,000.00	1,891,885.93	311,015.76
General Obligation Bonds/Notes – CIB	02/2019	9,080,000.00		285,000.00	8,795,000.00	585,290.00	330,740.00
General Obligation Bonds/Notes – CIB	11/2017	8,915,000.00		540,000.00	8,375,000.00	459,250.00	247,300.00
General Obligation Bonds/Notes – CIB	3/2018	14,690,000.00		1,150,000.00	13,540,000.00	2,091,887.50	620,687.50
Other Long Term Debt/Liabilities		2,020,647.00	922,701.00		2,943,348.00	155,310.00	
Compensated Absences		2,407,512.50	166,675.00	391,875.00	2,182,312.50		
Other Post-Employment Benefits (OPEB)		12,277,698.00	546,252.00		12,823,950.00		
Net Pension Liability		165,976,000.00		29,887,000.00	136,089,000.00		
Leases		3,221,415.00		1,205,433.00	2,015,982.00	1,003,778.00	19,110.00
Totals for Debt Entered:		\$249,033,272.50	\$11,630,628.00	\$33,654,308.00	\$227,009,592.50	\$7,468,563.94	\$1,905,184.00

<u>Bond Details</u> <u>Proprietary Funds</u>		Principal Amounts Only				Current Portion Due Within One Year (Principal and Interest)	Interest Paid During Fiscal Year
Debt Category	Debt Issue Date (MM/YYYY)	Debt at Beginning of Fiscal Year	Additions	Reductions / Repayments	Debt at End of Fiscal Year		
Compensated Absences		104,800.00	11,300.00	32,800.00	83,300.00		
Other Post-Employment Benefits (OPEB)		349,200.00	37,600.00		386,800.00		
Net Pension Liability		5,425,000.00		977,000.00	4,448,000.00		
Totals for Debt Entered:		\$5,879,000.00	\$48,900.00	\$1,009,800.00	\$4,918,100.00		

LEA : 123463603 Hatboro-Horsham SD

General Fund (10)

Section 1: Tuition/Purchased Services as Reported within Expenditure Detail	Amount
Tuition Reported in General Fund Expenditures 1000-560	4,470,680.13
Purchased Services in General Fund Expenditures 1000-594 and 1000-597	398.55
Section 1 Total	\$4,471,078.68

Section 2: Tuition Paid to Institution Types During Fiscal Year	Tuition Paid For Nonspecial Education	Tuition Paid For Special Education	Total
1 1306 Institutions			
2 Institutionalized Children's Programs			
3 Juveniles Incarcerated in Adult Facilities		398.55	398.55
4 Residential Treatment Facilities	17,740.32	518,467.98	536,208.30
5 Other Local Education Agencies	5,012.62	23,300.64	28,313.26
6 Brick and Mortar Charter Schools	17,037.93		17,037.93
7 Cyber Charter Schools	631,051.02	386,570.47	1,017,621.49
8 Career and Technology Centers	860,572.18	468,496.82	1,329,069.00
9 Approved Private Schools		341,244.05	341,244.05
10 PA Chartered Schools for the Deaf and Blind		41,760.00	41,760.00
11 Private Residential Rehabilitative Institutions	760.00	240.00	1,000.00
12 Juvenile Detention Centers			
13 Special Program Jointures			
14 Other Tuition Not Included Elsewhere In This Section	213.73	1,158,212.37	1,158,426.10
Section 2 Total	\$1,532,387.80	\$2,938,690.88	\$4,471,078.68

1 .	<u>Student Transportation Services for Educational Field Trips</u>	16,861.83
2 .	<u>Student Transportation Services for Student Activities</u>	62,427.59
3 .	<u>Rental of Vehicles for Student Transportation Services</u>	
4 .	<u>Capital Reserve Funds</u>	202,764.00

Include only district-owned transportation expenditures paid from State or local money.
DO NOT include federal expenditures or payments to contract service providers.
Contracted transportation services should not be recorded on this schedule.

LEA : 123463603 Hatboro-Horsham SD

Printed 11/30/2022 4:04:48 PM

Food Service / Cafeteria Operations Fund (51)

3000 Operation of Non-Instructional Services		<u>Total</u>
100 <u>Personnel Services – Salaries</u>		
100 Personnel Services – Salaries		648,939.64
Total Personnel Services – Salaries		\$648,939.64
200 <u>Personnel Services – Employee Benefits</u>		
220 Social Security Contributions		49,520.94
230 PSERS Retirement Contributions		218,687.08
270 Group Insurance – Self-Insurance		168,843.12
280 Other Post-Employment Benefits (OPEB)		(138,900.00)
Total Personnel Services – Employee Benefits		\$298,151.14
300 <u>Purchased Professional and Technical Services</u>		
300 Purchased Professional and Technical Services		19,072.84
Total Purchased Professional and Technical Services		\$19,072.84
500 <u>Other Purchased Services</u>		
599 Other Miscellaneous Purchased Services		957,237.00
Total Other Purchased Services		\$957,237.00
600 <u>Supplies</u>		
610 General Supplies		121,051.00
Total Supplies		\$121,051.00
700 <u>Property</u>		
740 Depreciation		11,888.27
Total Property		\$11,888.27
800 <u>Other Objects</u>		
890 Miscellaneous Expenditures		906.04
Total Other Objects		\$906.04
Total 3000 Operation of Non-Instructional Services		\$2,057,245.93

LEA : 123463603 Hatboro-Horsham SD

Printed 11/30/2022 4:04:48 PM

Food Service / Cafeteria Operations Fund (51)

3100 Food Services	<u>Elementary</u>	<u>Secondary</u>	<u>Federal</u>	<u>Total</u>
100 <u>Personnel Services – Salaries</u>				
100 Personnel Services – Salaries				648,939.64
Total Personnel Services – Salaries				\$648,939.64
200 <u>Personnel Services – Employee Benefits</u>				
220 Social Security Contributions				49,520.94
230 PSERS Retirement Contributions				218,687.08
270 Group Insurance – Self-Insurance				168,843.12
280 Other Post-Employment Benefits (OPEB)				(138,900.00)
Total Personnel Services – Employee Benefits				\$298,151.14
300 <u>Purchased Professional and Technical Services</u>				
300 Purchased Professional and Technical Services				19,072.84
Total Purchased Professional and Technical Services				\$19,072.84
500 <u>Other Purchased Services</u>				
599 Other Miscellaneous Purchased Services				957,237.00
Total Other Purchased Services				\$957,237.00
600 <u>Supplies</u>				
610 General Supplies				121,051.00
Total Supplies				\$121,051.00
700 <u>Property</u>				
740 Depreciation				11,888.27
Total Property				\$11,888.27
800 <u>Other Objects</u>				
890 Miscellaneous Expenditures				906.04
Total Other Objects				\$906.04
Total 3100 Food Services				\$2,057,245.93

LEA : 123463603 Hatboro-Horsham SD

Printed 11/30/2022 4:04:52 PM

Child Care Operations Fund (52)

3000 Operation of Non-Instructional Services		<u>Total</u>
100 <u>Personnel Services – Salaries</u>		
100 Personnel Services – Salaries		924,499.58
Total Personnel Services – Salaries		\$924,499.58
200 <u>Personnel Services – Employee Benefits</u>		
220 Social Security Contributions		69,637.00
230 PSERS Retirement Contributions		157,142.00
270 Group Insurance – Self-Insurance		112,935.00
280 Other Post-Employment Benefits (OPEB)		(85,213.00)
Total Personnel Services – Employee Benefits		\$254,501.00
500 <u>Other Purchased Services</u>		
599 Other Miscellaneous Purchased Services		19,967.00
Total Other Purchased Services		\$19,967.00
600 <u>Supplies</u>		
610 General Supplies		100,542.00
Total Supplies		\$100,542.00
800 <u>Other Objects</u>		
890 Miscellaneous Expenditures		100,387.00
Total Other Objects		\$100,387.00
Total 3000 Operation of Non-Instructional Services		\$1,399,896.58

LEA : 123463603 Hatboro-Horsham SD

Printed 11/30/2022 4:04:52 PM

Child Care Operations Fund (52)

3300 Community Services

Elementary Secondary Federal Total

100	<u>Personnel Services – Salaries</u>			
100	Personnel Services – Salaries			924,499.58
Total Personnel Services – Salaries				\$924,499.58
200	<u>Personnel Services – Employee Benefits</u>			
220	Social Security Contributions			69,637.00
230	PSERS Retirement Contributions			157,142.00
270	Group Insurance – Self-Insurance			112,935.00
280	Other Post-Employment Benefits (OPEB)			(85,213.00)
Total Personnel Services – Employee Benefits				\$254,501.00
500	<u>Other Purchased Services</u>			
599	Other Miscellaneous Purchased Services			19,967.00
Total Other Purchased Services				\$19,967.00
600	<u>Supplies</u>			
610	General Supplies			100,542.00
Total Supplies				\$100,542.00
800	<u>Other Objects</u>			
890	Miscellaneous Expenditures			100,387.00
Total Other Objects				\$100,387.00
Total 3300 Community Services				\$1,399,896.58

LEA : 123463603 Hatboro-Horsham SD

Printed 11/30/2022 4:04:43 PM

Internal Service Fund (60)

2000 Support Services

Total

200 Personnel Services – Employee Benefits

270 Group Insurance – Self-Insurance	9,359,006.99
--------------------------------------	--------------

Total Personnel Services – Employee Benefits	\$9,359,006.99
---	-----------------------

500 Other Purchased Services

520 Insurance – General	1,353,611.81
-------------------------	--------------

Total Other Purchased Services	\$1,353,611.81
---------------------------------------	-----------------------

800 Other Objects

810 Dues and Fees	2,822.00
-------------------	----------

Total Other Objects	\$2,822.00
----------------------------	-------------------

Total 2000 Support Services	\$10,715,440.80
------------------------------------	------------------------

LEA : 123463603 Hatboro-Horsham SD

Printed 11/30/2022 4:04:43 PM

Internal Service Fund (60)

2800 Support Services – Central

Elementary Secondary Federal Total

200 <u>Personnel Services – Employee Benefits</u>				
270 Group Insurance – Self-Insurance				9,359,006.99
Total Personnel Services – Employee Benefits				\$9,359,006.99
500 <u>Other Purchased Services</u>				
520 Insurance – General				1,353,611.81
Total Other Purchased Services				\$1,353,611.81
800 <u>Other Objects</u>				
810 Dues and Fees				2,822.00
Total Other Objects				\$2,822.00
Total 2800 Support Services – Central				\$10,715,440.80

LEA : 123463603 Hatboro-Horsham SD

Printed 11/30/2022 4:04:43 PM

Internal Service Fund (60)

2830 Staff Services

Elementary Secondary Federal Total

200 <u>Personnel Services – Employee Benefits</u>				
270 Group Insurance – Self-Insurance				9,359,006.99
Total Personnel Services – Employee Benefits				\$9,359,006.99
500 <u>Other Purchased Services</u>				
520 Insurance – General				1,353,611.81
Total Other Purchased Services				\$1,353,611.81
800 <u>Other Objects</u>				
810 Dues and Fees				2,822.00
Total Other Objects				\$2,822.00
Total 2830 Staff Services				\$10,715,440.80

LEA : 123463603 Hatboro-Horsham SD

Printed 11/30/2022 4:04:43 PM

Internal Service Fund (60)

2835 Health Services

Elementary Secondary Federal Total

200 <u>Personnel Services – Employee Benefits</u>				
270 Group Insurance – Self-Insurance				9,359,006.99
Total Personnel Services – Employee Benefits				\$9,359,006.99
500 <u>Other Purchased Services</u>				
520 Insurance – General				1,353,611.81
Total Other Purchased Services				\$1,353,611.81
800 <u>Other Objects</u>				
810 Dues and Fees				2,822.00
Total Other Objects				\$2,822.00
Total 2835 Health Services				\$10,715,440.80

	<u>Food Service(51)</u>	<u>Child Care Operations(52)</u>	<u>Other Enterprise(58)</u>	<u>Internal Service(60)</u>	<u>Total</u>
2000 <u>Support Services</u>					
2800 Support Services - Central				10,715,440.80	10,715,440.80
Total Support Services				\$10,715,440.80	\$10,715,440.80
3000 <u>Operation of Non-Instructional Services</u>					
3100 Food Services	2,057,245.93				2,057,245.93
3300 Community Services		1,399,896.58			1,399,896.58
Total Operation of Non-Instructional Services	\$2,057,245.93	\$1,399,896.58			\$3,457,142.51
TOTAL ACTUAL EXPENDITURES & OTHER FINANCING USES	\$2,057,245.93	\$1,399,896.58		\$10,715,440.80	\$14,172,583.31

LEA : 123463603 Hatboro-Horsham SD

Printed 11/30/2022 4:05:09 PM

Fund	School	School Number	Local Personnel	Local Nonpersonnel	State Personnel	State Nonpersonnel	Federal Personnel	Federal Nonpersonnel	Total	Explanation
10										
	Blair Mill El Sch	5079	5,509,049.00	1,172,210.00	1,292,246.00	277,298.00	89,313.00	137,174.00	8,477,290.00	
	Crooked Billet El Sch	8483	6,738,317.00	1,376,393.00	1,580,593.00	325,470.00	92,219.00	153,461.00	10,266,453.00	
	Hallowell El Sch	3271	5,732,011.00	1,361,358.00	1,344,546.00	321,888.00	113,085.00	150,204.00	9,023,092.00	
	Hatboro-Horsham SHS	3272	21,054,448.00	4,554,658.00	4,938,698.00	1,076,792.00	639,557.00	497,526.00	32,761,679.00	
	Keith Valley MS	6639	16,112,323.00	3,273,134.00	3,779,434.00	774,309.00	697,821.00	391,035.00	25,028,056.00	
	Simmons El Sch	3270	8,893,612.00	1,897,125.00	2,086,156.00	448,547.00	125,062.00	208,114.00	13,658,616.00	
Total			64,039,760.00	13,634,878.00	15,021,673.00	3,224,304.00	1,757,057.00	1,537,514.00	99,215,186.00	